



DUNE CARBON

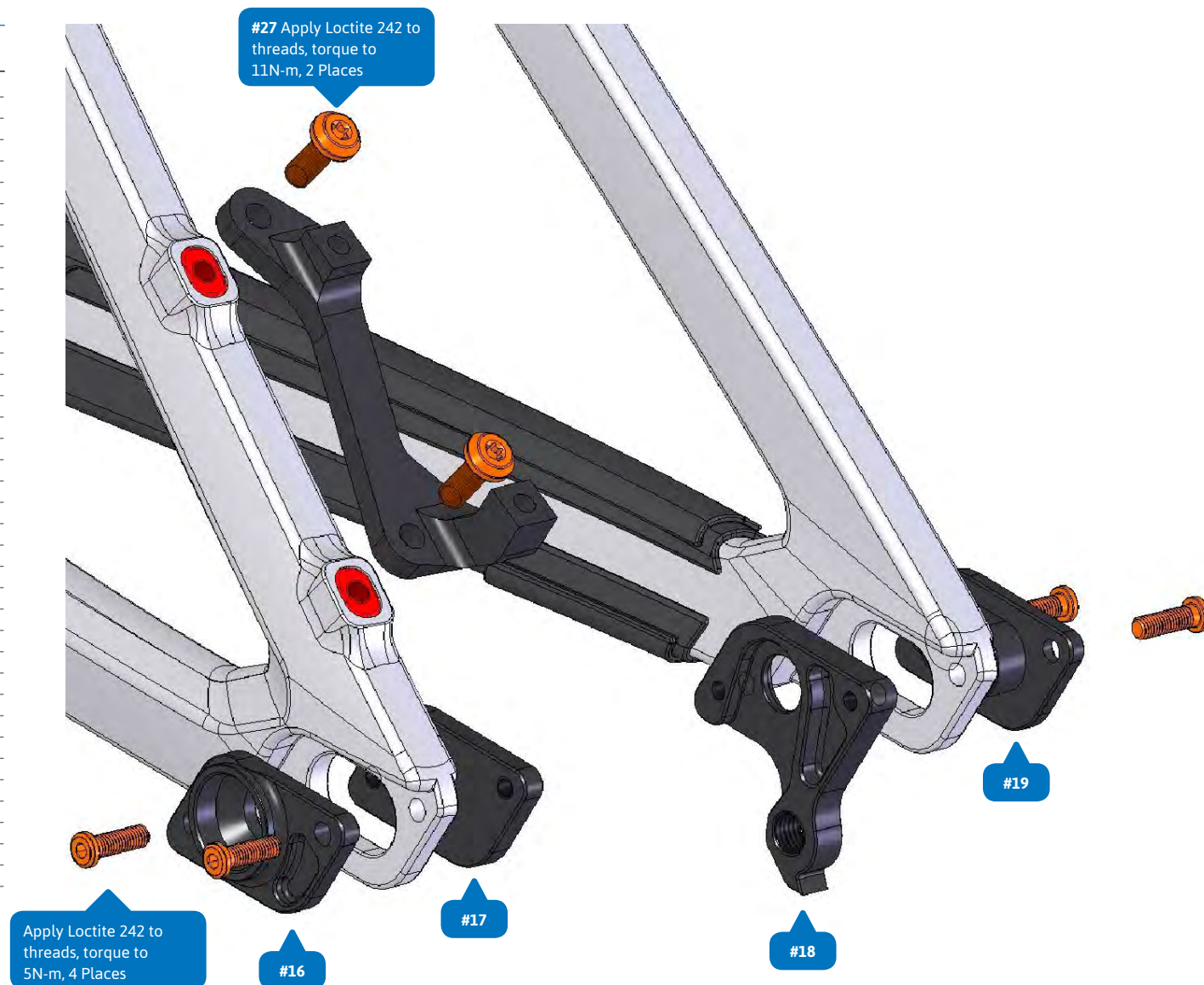
DUNE CARBON

ITEM No.	DESCRIPTION	QTY.
1	FRONT TRIANGLE	1
2	SWING ARM	1
3	LOWER LINK	1
4	UPPER LINK	1
5	BEARING 6801V-2RS (INT. 12MM. EXT 21MM)	4
6	BEARING 6901V-2RS (INT. 12MM. EXT 24MM)	6
7	SPACER D16xD12x27	1
8	SPACER D20.5xD12x3MM	2
9	SPACER D23.5xD12x3MM	2
10	TAPER NUT 10.5MM	2
11	PIVOT AXLE M12X70.5MM	2
12	SPACER D21.5xD12x3MM	4
13	PIVOT AXLE D16x14MM	2
14	PIVOT AXLE M12x18MM	2
15	PIVOT AXLE D12x37MM	2
16	CHIP LEFT	1
17	HANGER M065 LEFT	1
18	HANGER M065	1
19	CHIP RIGHT	1
20	SCREW BOLT	4
21	CABLE RUBBER	5
22	CABLE HOLDER	2
23	CABLE HOLDER	2
24	FENDER	1
25	M5x15L-M SCREW BOLT	4
26	POST MOUNT ADAPTOR	1
27	M6X16 SCREW	2
28	BOLT M10x36	2
29	BASH GUARD ISCG 05	1
30	M6x12L-M-S SCREW	3
31	SPACER D10XD6X1MM	2
32	M6x25L-P-S SCREW BOLT	2
33	SEAT CLAMP 34.9	1
34	M5x20L-P SCREW BOLT	1
35	SPACER D16xD12x19MM	1
36	SCREW AXLE M6x50	1
37	CHAINSTAY PROTECTOR	1
38	SEATSTAY PROTECTOR	1



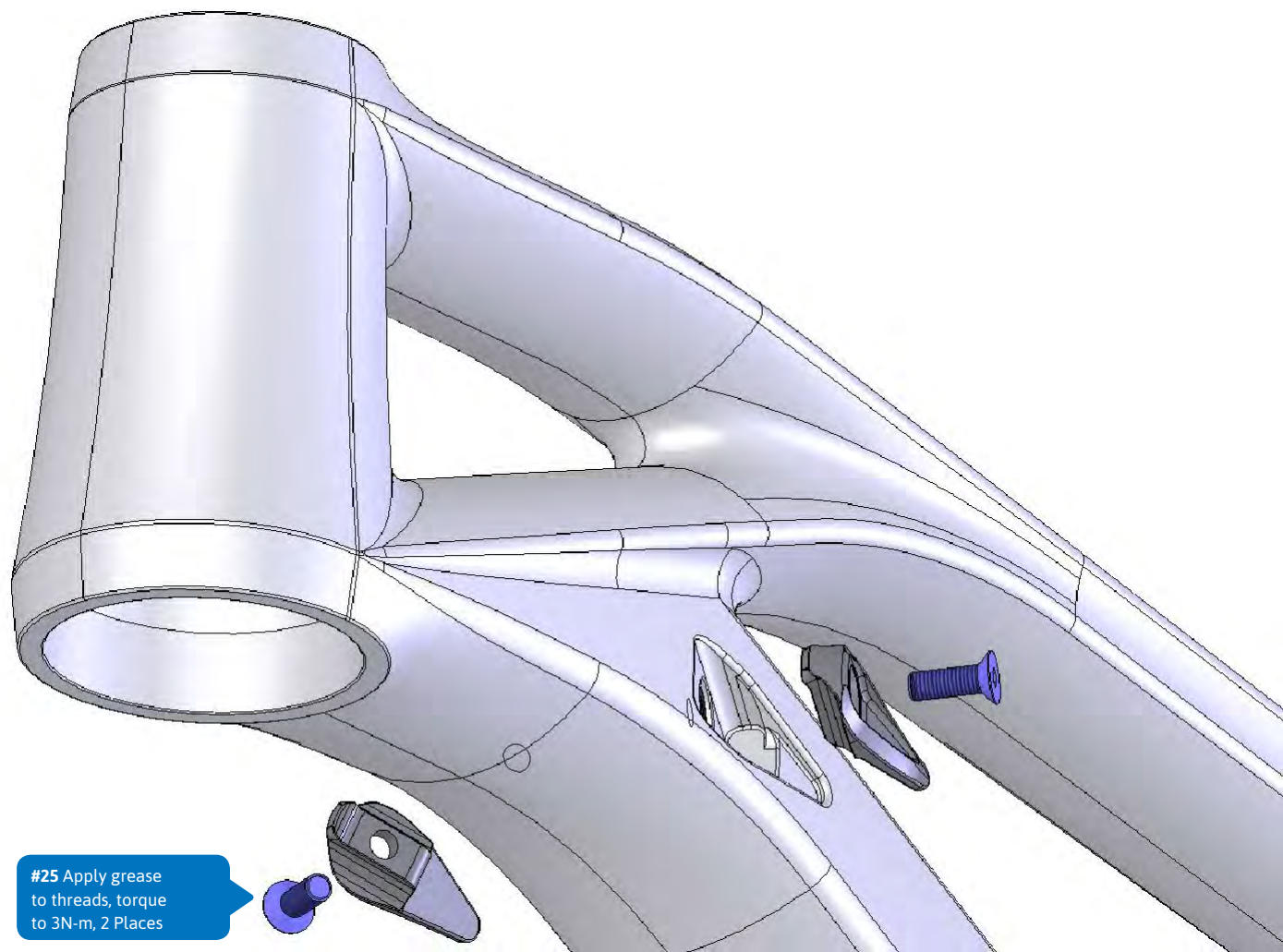
DUNE CARBON

ITEM No.	DESCRIPTION	QTY.
1	FRONT TRIANGLE	1
2	SWING ARM	1
3	LOWER LINK	1
4	UPPER LINK	1
5	BEARING 6801V-2RS (INT. 12MM. EXT 21MM)	4
6	BEARING 6901V-2RS (INT. 12MM. EXT 24MM)	6
7	SPACER D16xD12x27	1
8	SPACER D20.5xD12x3MM	2
9	SPACER D23.5xD12x3MM	2
10	TAPER NUT 10.5MM	2
11	PIVOT AXLE M12X70.5MM	2
12	SPACER D21.5xD12x3MM	4
13	PIVOT AXLE D16x14MM	2
14	PIVOT AXLE M12x18MM	2
15	PIVOT AXLE D12x37MM	2
16	CHIP LEFT	1
17	HANGER M065 LEFT	1
18	HANGER M065	1
19	CHIP RIGHT	1
20	SCREW BOLT	4
21	CABLE RUBBER	5
22	CABLE HOLDER	2
23	CABLE HOLDER	2
24	FENDER	1
25	M5x15L-M SCREW BOLT	4
26	POST MOUNT ADAPTOR	1
27	M6X16 SCREW	2
28	BOLT M10x36	2
29	BASH GUARD ISCG 05	1
30	M6x12L-M-S SCREW	3
31	SPACER D10XD6X1MM	2
32	M6x25L-P-S SCREW BOLT	2
33	SEAT CLAMP 34.9	1
34	M5x20L-P SCREW BOLT	1
35	SPACER D16xD12x19MM	1
36	SCREW AXLE M6x50	1
37	CHAINSTAY PROTECTOR	1
38	SEATSTAY PROTECTOR	1



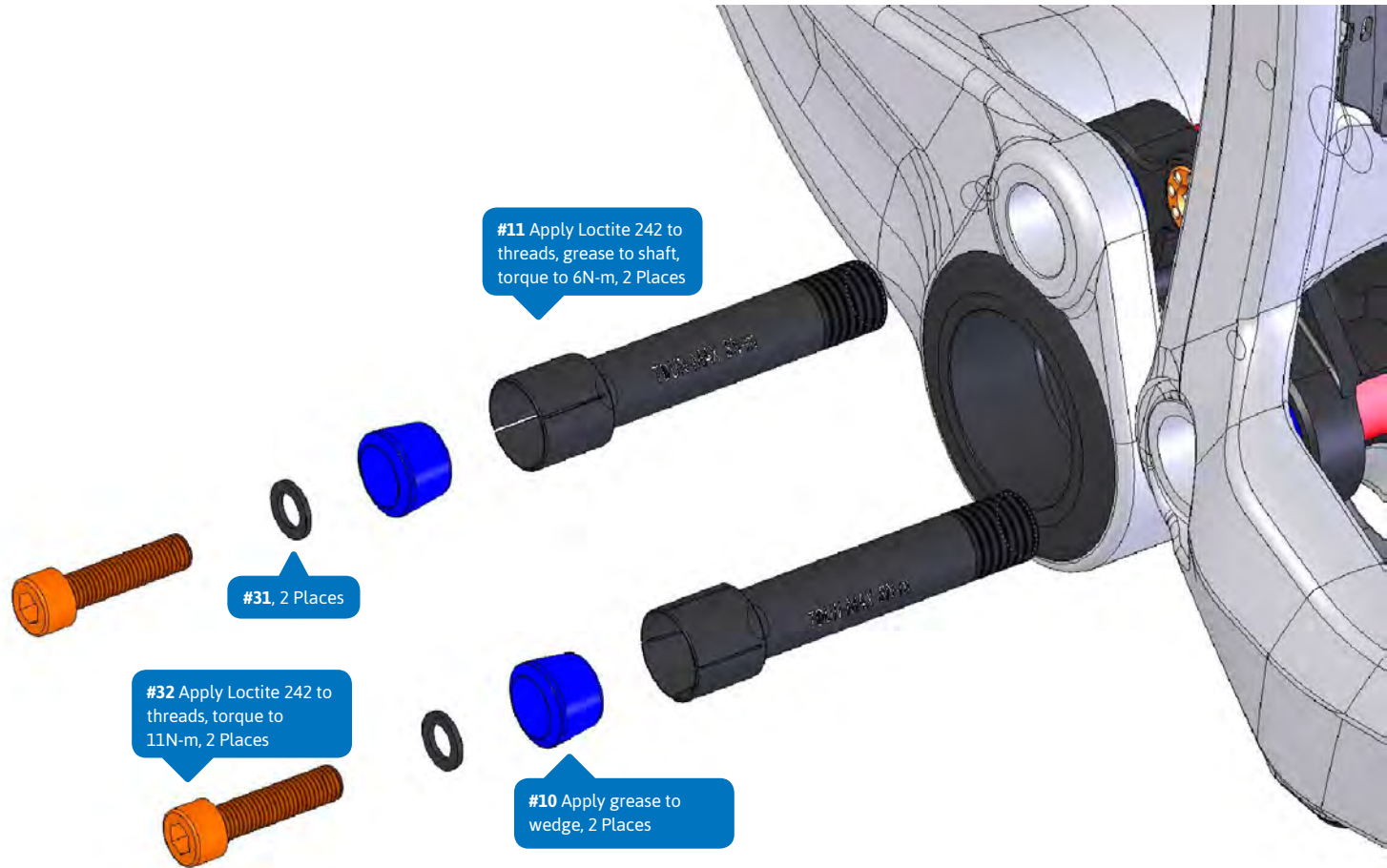
DUNE CARBON

ITEM No.	DESCRIPTION	QTY.
1	FRONT TRIANGLE	1
2	SWING ARM	1
3	LOWER LINK	1
4	UPPER LINK	1
5	BEARING 6801V-2RS (INT. 12MM. EXT 21MM)	4
6	BEARING 6901V-2RS (INT. 12MM. EXT 24MM)	6
7	SPACER D16xD12x27	1
8	SPACER D20.5xD12x3MM	2
9	SPACER D23.5xD12x3MM	2
10	TAPER NUT 10.5MM	2
11	PIVOT AXLE M12X70.5MM	2
12	SPACER D21.5xD12x3MM	4
13	PIVOT AXLE D16x14MM	2
14	PIVOT AXLE M12x18MM	2
15	PIVOT AXLE D12x37MM	2
16	CHIP LEFT	1
17	HANGER M065 LEFT	1
18	HANGER M065	1
19	CHIP RIGHT	1
20	SCREW BOLT	4
21	CABLE RUBBER	5
22	CABLE HOLDER	2
23	CABLE HOLDER	2
24	FENDER	1
25	M5x15L-M SCREW BOLT	4
26	POST MOUNT ADAPTOR	1
27	M6X16 SCREW	2
28	BOLT M10x36	2
29	BASH GUARD ISCG 05	1
30	M6x12L-M-S SCREW	3
31	SPACER D10XD6X1MM	2
32	M6x25L-P-S SCREW BOLT	2
33	SEAT CLAMP 34.9	1
34	M5x20L-P SCREW BOLT	1
35	SPACER D16xD12x19MM	1
36	SCREW AXLE M6x50	1
37	CHAINSTAY PROTECTOR	1
38	SEATSTAY PROTECTOR	1



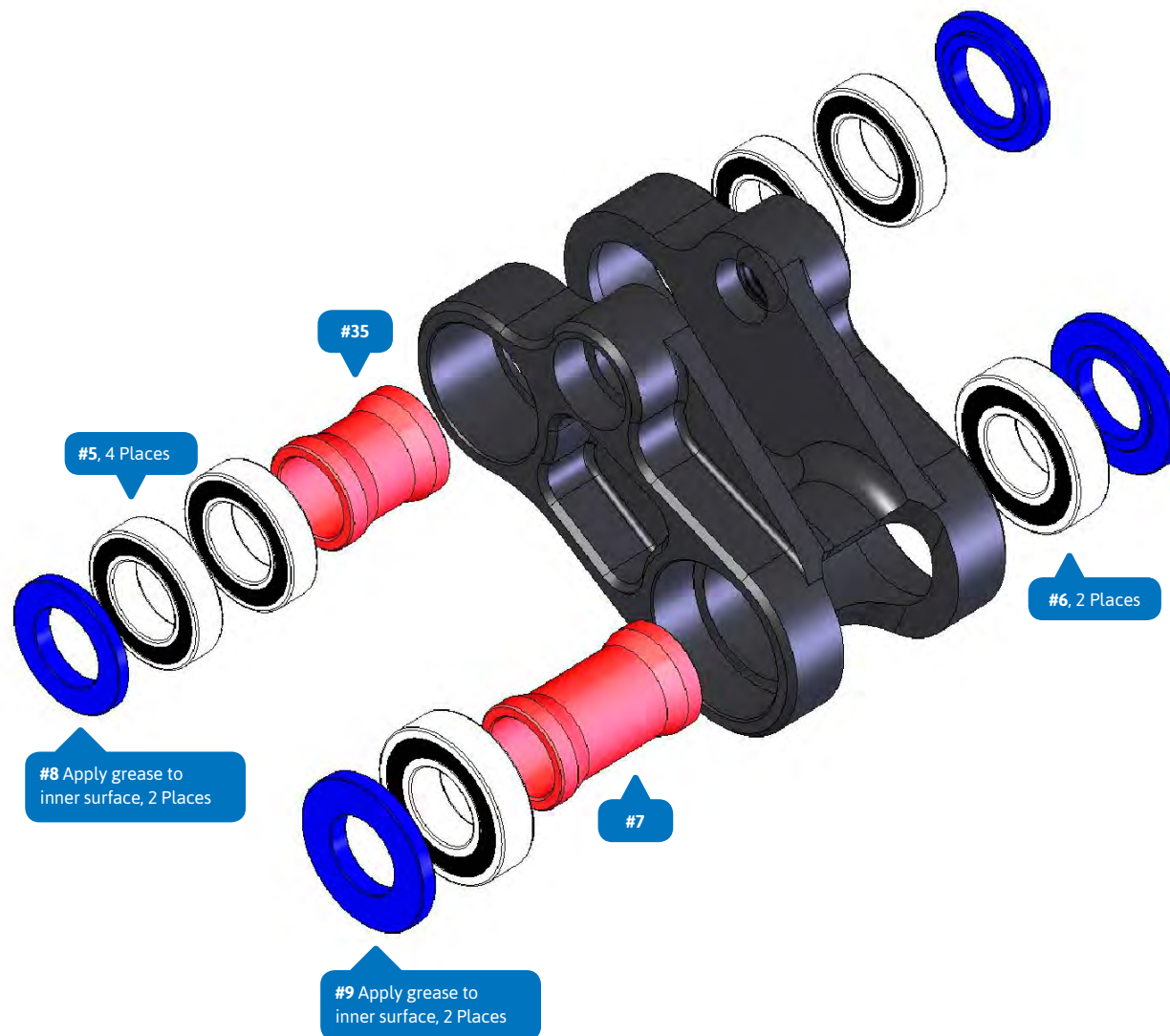
DUNE CARBON

ITEM No.	DESCRIPTION	QTY.
1	FRONT TRIANGLE	1
2	SWING ARM	1
3	LOWER LINK	1
4	UPPER LINK	1
5	BEARING 6801V-2RS (INT. 12MM. EXT 21MM)	4
6	BEARING 6901V-2RS (INT. 12MM. EXT 24MM)	6
7	SPACER D16xD12x27	1
8	SPACER D20.5xD12x3MM	2
9	SPACER D23.5xD12x3MM	2
10	TAPER NUT 10.5MM	2
11	PIVOT AXLE M12X70.5MM	2
12	SPACER D21.5xD12x3MM	4
13	PIVOT AXLE D16x14MM	2
14	PIVOT AXLE M12x18MM	2
15	PIVOT AXLE D12x37MM	2
16	CHIP LEFT	1
17	HANGER M065 LEFT	1
18	HANGER M065	1
19	CHIP RIGHT	1
20	SCREW BOLT	4
21	CABLE RUBBER	5
22	CABLE HOLDER	2
23	CABLE HOLDER	2
24	FENDER	1
25	M5x15L-M SCREW BOLT	4
26	POST MOUNT ADAPTOR	1
27	M6X16 SCREW	2
28	BOLT M10x36	2
29	BASH GUARD ISCG 05	1
30	M6x12L-M-S SCREW	3
31	SPACER D10XD6X1MM	2
32	M6x25L-P-S SCREW BOLT	2
33	SEAT CLAMP 34.9	1
34	M5x20L-P SCREW BOLT	1
35	SPACER D16xD12x19MM	1
36	SCREW AXLE M6x50	1
37	CHAINSTAY PROTECTOR	1
38	SEATSTAY PROTECTOR	1



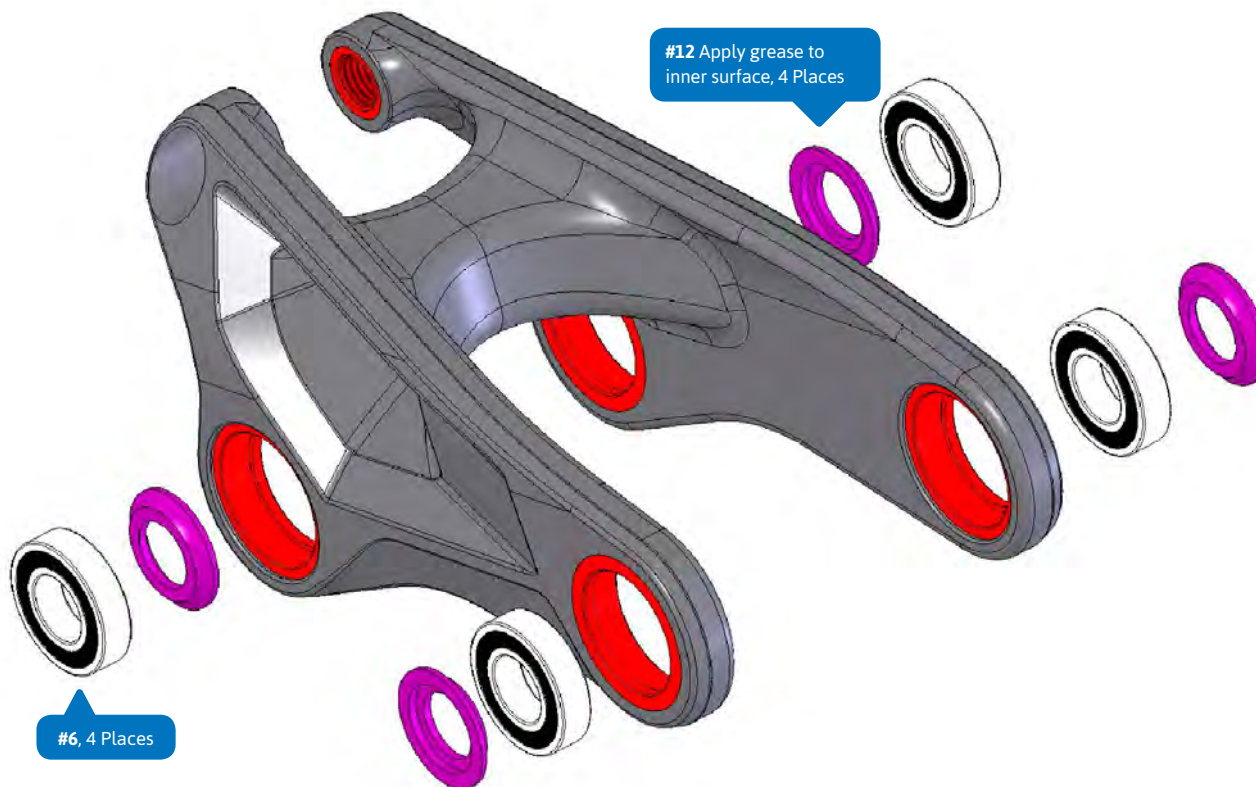
DUNE CARBON

ITEM No.	DESCRIPTION	QTY.
1	FRONT TRIANGLE	1
2	SWING ARM	1
3	LOWER LINK	1
4	UPPER LINK	1
5	BEARING 6801V-2RS (INT. 12MM. EXT 21MM)	4
6	BEARING 6901V-2RS (INT. 12MM. EXT 24MM)	6
7	SPACER D16xD12x27	1
8	SPACER D20.5xD12x3MM	2
9	SPACER D23.5xD12x3MM	2
10	TAPER NUT 10.5MM	2
11	PIVOT AXLE M12X70.5MM	2
12	SPACER D21.5xD12x3MM	4
13	PIVOT AXLE D16x14MM	2
14	PIVOT AXLE M12x18MM	2
15	PIVOT AXLE D12x37MM	2
16	CHIP LEFT	1
17	HANGER M065 LEFT	1
18	HANGER M065	1
19	CHIP RIGHT	1
20	SCREW BOLT	4
21	CABLE RUBBER	5
22	CABLE HOLDER	2
23	CABLE HOLDER	2
24	FENDER	1
25	M5x15L-M SCREW BOLT	4
26	POST MOUNT ADAPTOR	1
27	M6X16 SCREW	2
28	BOLT M10x36	2
29	BASH GUARD ISCG 05	1
30	M6x12L-M-S SCREW	3
31	SPACER D10XD6X1MM	2
32	M6x25L-P-S SCREW BOLT	2
33	SEAT CLAMP 34.9	1
34	M5x20L-P SCREW BOLT	1
35	SPACER D16xD12x19MM	1
36	SCREW AXLE M6x50	1
37	CHAINSTAY PROTECTOR	1
38	SEATSTAY PROTECTOR	1



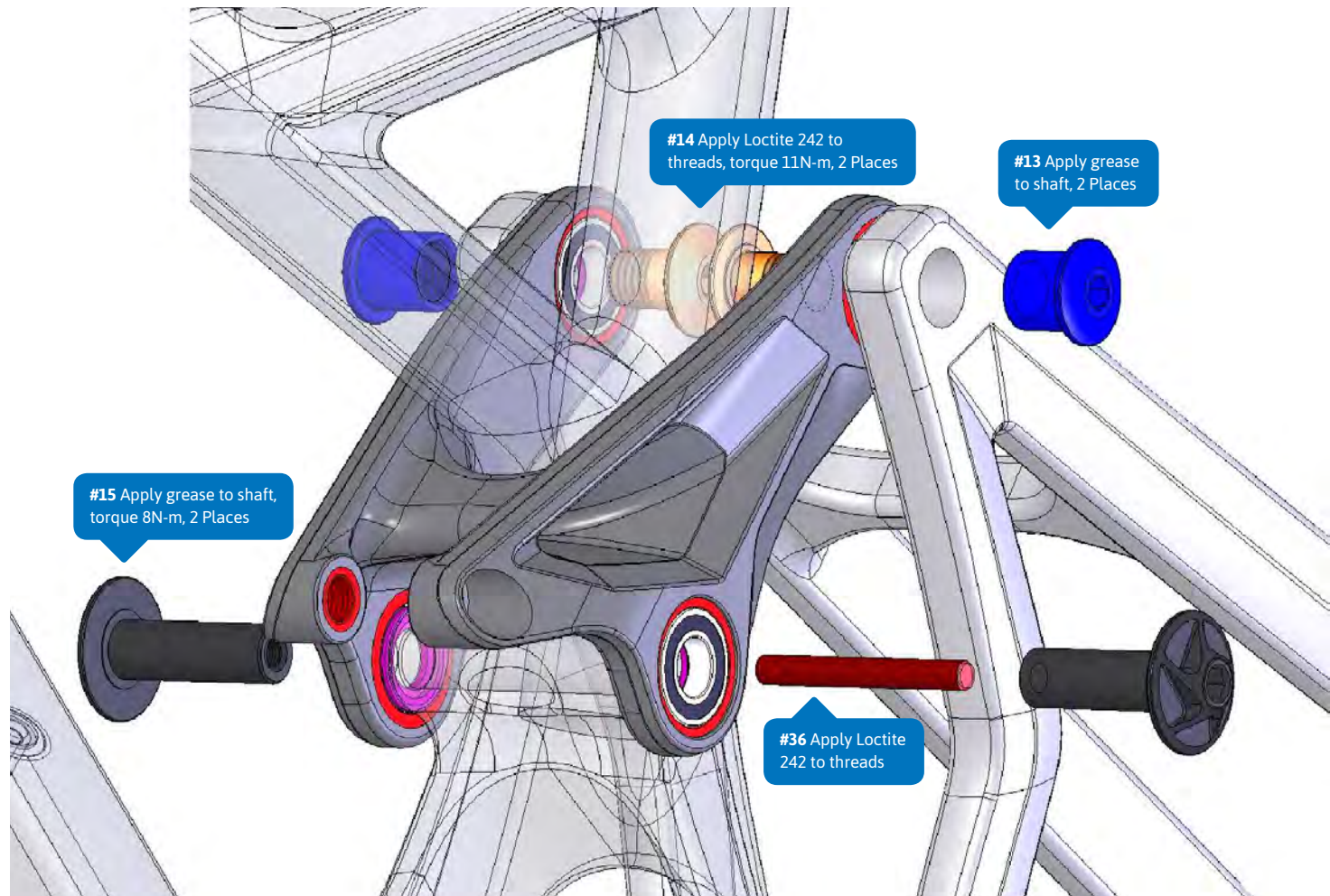
DUNE CARBON

ITEM No.	DESCRIPTION	QTY.
1	FRONT TRIANGLE	1
2	SWING ARM	1
3	LOWER LINK	1
4	UPPER LINK	1
5	BEARING 6801V-2RS (INT. 12MM. EXT 21MM)	4
6	BEARING 6901V-2RS (INT. 12MM. EXT 24MM)	6
7	SPACER D16xD12x27	1
8	SPACER D20.5xD12x3MM	2
9	SPACER D23.5xD12x3MM	2
10	TAPER NUT 10.5MM	2
11	PIVOT AXLE M12X70.5MM	2
12	SPACER D21.5xD12x3MM	4
13	PIVOT AXLE D16x14MM	2
14	PIVOT AXLE M12x18MM	2
15	PIVOT AXLE D12x37MM	2
16	CHIP LEFT	1
17	HANGER M065 LEFT	1
18	HANGER M065	1
19	CHIP RIGHT	1
20	SCREW BOLT	4
21	CABLE RUBBER	5
22	CABLE HOLDER	2
23	CABLE HOLDER	2
24	FENDER	1
25	M5x15L-M SCREW BOLT	4
26	POST MOUNT ADAPTOR	1
27	M6X16 SCREW	2
28	BOLT M10x36	2
29	BASH GUARD ISCG 05	1
30	M6x12L-M-S SCREW	3
31	SPACER D10XD6X1MM	2
32	M6x25L-P-S SCREW BOLT	2
33	SEAT CLAMP 34.9	1
34	M5x20L-P SCREW BOLT	1
35	SPACER D16xD12x19MM	1
36	SCREW AXLE M6x50	1
37	CHAINSTAY PROTECTOR	1
38	SEATSTAY PROTECTOR	1



DUNE CARBON

ITEM No.	DESCRIPTION	QTY.
1	FRONT TRIANGLE	1
2	SWING ARM	1
3	LOWER LINK	1
4	UPPER LINK	1
5	BEARING 6801V-2RS (INT. 12MM. EXT 21MM)	4
6	BEARING 6901V-2RS (INT. 12MM. EXT 24MM)	6
7	SPACER D16xD12x27	1
8	SPACER D20.5xD12x3MM	2
9	SPACER D23.5xD12x3MM	2
10	TAPER NUT 10.5MM	2
11	PIVOT AXLE M12X70.5MM	2
12	SPACER D21.5xD12x3MM	4
13	PIVOT AXLE D16x14MM	2
14	PIVOT AXLE M12x18MM	2
15	PIVOT AXLE D12x37MM	2
16	CHIP LEFT	1
17	HANGER M065 LEFT	1
18	HANGER M065	1
19	CHIP RIGHT	1
20	SCREW BOLT	4
21	CABLE RUBBER	5
22	CABLE HOLDER	2
23	CABLE HOLDER	2
24	FENDER	1
25	M5x15L-M SCREW BOLT	4
26	POST MOUNT ADAPTOR	1
27	M6X16 SCREW	2
28	BOLT M10x36	2
29	BASH GUARD ISCG 05	1
30	M6x12L-M-S SCREW	3
31	SPACER D10XD6X1MM	2
32	M6x25L-P-S SCREW BOLT	2
33	SEAT CLAMP 34.9	1
34	M5x20L-P SCREW BOLT	1
35	SPACER D16xD12x19MM	1
36	SCREW AXLE M6x50	1
37	CHAINSTAY PROTECTOR	1
38	SEATSTAY PROTECTOR	1



DUNE CARBON

ITEM No.	DESCRIPTION	QTY.
1	FRONT TRIANGLE	1
2	SWING ARM	1
3	LOWER LINK	1
4	UPPER LINK	1
5	BEARING 6801V-2RS (INT. 12MM. EXT 21MM)	4
6	BEARING 6901V-2RS (INT. 12MM. EXT 24MM)	6
7	SPACER D16xD12x27	1
8	SPACER D20.5xD12x3MM	2
9	SPACER D23.5xD12x3MM	2
10	TAPER NUT 10.5MM	2
11	PIVOT AXLE M12X70.5MM	2
12	SPACER D21.5xD12x3MM	4
13	PIVOT AXLE D16x14MM	2
14	PIVOT AXLE M12x18MM	2
15	PIVOT AXLE D12x37MM	2
16	CHIP LEFT	1
17	HANGER M065 LEFT	1
18	HANGER M065	1
19	CHIP RIGHT	1
20	SCREW BOLT	4
21	CABLE RUBBER	5
22	CABLE HOLDER	2
23	CABLE HOLDER	2
24	FENDER	1
25	M5x15L-M SCREW BOLT	4
26	POST MOUNT ADAPTOR	1
27	M6X16 SCREW	2
28	BOLT M10x36	2
29	BASH GUARD ISCG 05	1
30	M6x12L-M-S SCREW	3
31	SPACER D10XD6X1MM	2
32	M6x25L-P-S SCREW BOLT	2
33	SEAT CLAMP 34.9	1
34	M5x20L-P SCREW BOLT	1
35	SPACER D16xD12x19MM	1
36	SCREW AXLE M6x50	1
37	CHAINSTAY PROTECTOR	1
38	SEATSTAY PROTECTOR	1

