



# ROVAL SERVICE KIT



MY2012-2013



## TABLE OF CONTENTS

CONTROL SL (135MM and 142+) MY2012-13 . . . . .	3
CONTROL (135MM and 142+) MY2012 . . . . .	4
CONTROL 29 SL (135MM and 142+) MY2012 . . . . .	5
CONTROL 29 CARBON (135MM and 142+) MY2013 . . . . .	6
CONTROL 29 (135MM and 142+) MY2012-13 . . . . .	7
CONTROL TRAIL SL (135MM and 142+) MY2012-13 . . . . .	8
CONTROL TRAIL (135MM and 142+) MY2012-13 . . . . .	9
CONTROL TRAIL 29 SL (135MM and 142+) MY2012-13 . . . . .	10
CONTROL TRAIL 29 (135MM) MY2012-13 . . . . .	11
TRAVERSE SL (135MM and 142+) MY2013 . . . . .	12
TRAVERSE (135MM) MY2012-13 . . . . .	13
TRAVERSE 29 (135MM) MY2012-13 . . . . .	14
LFM02/03 REAR HUB, 240-BASED DESIGN, 142+ . . . . .	15
LFM02/03 REAR HUB, 240-BASED DESIGN, 135MM . . . . .	16
LFM02/03 REAR HUB, 350-BASED DESIGN, 142+ . . . . .	17
LFM02/03 REAR HUB, 350-BASED DESIGN, 135MM . . . . .	18
LFM06 FRONT HUB . . . . .	19
LFM06 END CAPS . . . . .	20
LFM07 FRONT HUB . . . . .	21
LFM07 END CAPS . . . . .	22
LFM11 FRONT HUB . . . . .	23
LFM11 END CAPS . . . . .	24
SPOKE LOOKUP . . . . .	25
NOTES . . . . .	26

## NOTICE

The Roval Service Kit for model years 2012 and 2013 will help you repair, as well as order the correct replacement parts for, Roval wheels. This kit includes spokes, nipples, bearings, freehub bodies, star ratchets and tubeless air valves. Use the included Specialized (SBC) part numbers when ordering parts directly from Specialized (DT Swiss part numbers are included for cross-reference purposes).

For ordering information, please logon to the Specialized Business-to-Business website (<http://ibd.specialized.com>) or contact your Specialized representative. Service and repair procedures and information are available on the Specialized Global Service System (<http://service.specialized.com>).



**WARNING! Wheel building, repair and maintenance is a procedure that requires expert knowledge. Do not disassemble or repair a Roval wheel unless you are an experienced mechanic/wheelbuilder. The parts provided in this service kit should only be used with their corresponding wheelset.**

## WARRANTY

For the complete warranty provisions, please refer to [www.specialized.com](http://www.specialized.com).

## CONTROL SL (135MM and 142+) MY2012-13

### FEATURES:

- XC race-focused wheelset
- 1,200g, including rim tape
- 26" carbon rims, 19mm inner width
- 28/24mm QR, 15mm thru-axle compatible front hub
- 135mm rear hub, convertible to 142mm with end caps (included)
- 142+ option specifically for Specialized frames, 10% stiffer than 135mm option
- 24 spokes with radial/3-cross lacing (front)
- 28 spokes with 3-cross lacing (rear)

COMPONENT	2012 SBC P/N	2013 SBC P/N	DESCRIPTION
WHEELSET (135MM)	S125500009 (F)/ S125500010 (R) (Red Graphic)	S135500013 (F/R) (White Graphic)	Control SL wheelset, 135mm, convertible to 142mm
WHEELSET (142+)	S125500009 (F)/ S125500012(R) (Red Graphic)	NA	Control SL wheelset, 142+ specific
FRONT HUB	NA		LFM11 Front hub, 28 Hole
FRONT RIM	S123700017 (Red Graphic)	S133700007	Roval Control SL carbon rim, 24 hole, 19mm inner width
FRONT SPOKE – RIGHT	S114600002	NA	DT Swiss AEROLITE, 14G, Straight pull 258MM
FRONT SPOKE – RIGHT	S20260009		DT Swiss REVOLUTION 14/17 Gauge, Straight pull 258MM
FRONT SPOKE – LEFT	S124600012	NA	DT Swiss AEROLITE, 14G, Straight pull 269MM
FRONT SPOKE – LEFT	S124600015		DT Swiss REVOLUTION 14/17 Gauge, Straight pull 269MM
REAR HUB 135MM	NA		Roval LFM02, 240-based hub, 28h, with 36-tooth quick engagement star ratchet, 135mm
REAR HUB 142+	NA		Roval LFM02, 240-based hub, 28h, with 36-tooth quick engagement star ratchet, 142+ (for Specialized frames only)
REAR RIM	S123700032 (Red Graphic)	S135500013	Roval Control SL carbon rim, 28 hole, 19mm inner width
REAR SPOKE – DRIVESIDE	S114600006	NA	DT Swiss AEROLITE, 14G, Straight pull 275MM
REAR SPOKE – DRIVESIDE	S114600025		DT Swiss REVOLUTION 14/17 Gauge, Straight pull 275MM
REAR SPOKE – NON-DRIVESIDE	S2026018	NA	DT Swiss AEROLITE, 14G, Straight pull 277MM
REAR SPOKE – NON-DRIVESIDE	S2026018		DT Swiss REVOLUTION 14/17 Gauge, Straight pull 277MM
NIPPLES	S112900002 (Red)	S2027005 (Black)	DT Swiss HEXAGONAL PROLOCK ALLOY, 14G x 14MM
FRONT QR	3000-1061 (Set)		Roval, TI AXLE 100MM
REAR QR			Roval, TI AXLE 135MM
End Caps	S125900007		For LFM11 front hub, 28mm diameter, QR (for Rockshox forks)
End Caps	S125900009		For LFM11 front hub, 24mm diameter, QR (for Fox forks)
End Caps	S125900010		For LFM11 front hub, 15mm thru-axle caps
End Caps	S115900020 (R), S115900021 (L)		For DT-based Roval rear hub, to convert from 135mm to 142mm
VALVE	S135500007		Roval Tubeless-ready valve, with removable core
RIM TAPE	S135500004		Roval Tubeless-ready rim strip, 26" x 21mm width

## CONTROL (135MM and 142+) MY2012

### FEATURES:

- XC race-focused wheelset
- 1,530g, including rim tape
- 26" M5 alloy rims, 19mm inner width
- 28/24mm QR, 15mm thru-axle compatible front hub
- 135mm rear hub, convertible to 142mm with end caps
- 24 spokes with radial/3-cross front lacing
- 28 spokes with 3-cross rear lacing

COMPONENT	2012 SBC P/N	DESCRIPTION
WHEELSET (135MM)	S125500081 (F)/ S125500002 (R) (Red Graphic)	Control wheelset, 135mm, convertible to 142mm
FRONT HUB	NA	LFM06 Front hub, 28 Hole
FRONT RIM	S123700014 (Red Graphic)	Roval Control M5 alloy rim, 24 hole, 19mm inner width
FRONT SPOKE – RIGHT	S2026009	DT Swiss REVOLUTION 14/17 Gauge, Straight pull 258MM
FRONT SPOKE – LEFT	S2026013	DT Swiss REVOLUTION 14/17 Gauge, Straight pull 271MM
REAR HUB 135MM	NA	Roval LFM02, 350-based hub, 28h, with 36-tooth quick engagement star ratchet, 135mm
REAR HUB 142+	NA	Roval LFM02, 350-based hub, 28h, with 36-tooth quick engagement star ratchet, 142+ (for Specialized frames only)
REAR RIM	S123700031 (Red Graphic)	Roval Control M5 alloy rim, 28 hole, 19mm inner width
REAR SPOKE – DRIVESIDE	S2026018	DT Swiss REVOLUTION 14/17 Gauge, Straight pull 277MM
REAR SPOKE – NON-DRIVESIDE	S114600026	DT Swiss REVOLUTION 14/17 Gauge, Straight pull 279MM
NIPPLES	S112900002 (Red Graphic)	DT Swiss HEXAGONAL PROLOCK ALLOY, 14G x 14MM
FRONT QR	NA	Roval, steel AXLE 100MM
REAR QR		Roval, steel AXLE 135MM
End Caps	S125900001	For LFM06 front hub, 28mm diameter, QR (for Rockshox forks)
End Caps	S125900002	For LFM06 front hub, 24mm diameter, QR (for Fox forks)
End Caps	S125900011	For LFM06 front hub, 15mm thru-axle caps
End Caps	S115900020 (R), S115900021 (L)	For DT-based Roval rear hub, to convert from 135mm to 142mm
VALVE	S135500007	Roval Tubeless-ready valve, with removable core
RIM TAPE	S135500004	Roval Tubeless-ready rim strip, 26" x 21mm width



## CONTROL 29 SL (135MM and 142+) MY2012

### FEATURES:

- XC race focused wheelset
- 1,440g, including rim tape
- 29" carbon rims, 21mm inner width
- 28/24mm QR, 15mm thru-axle compatible front hub
- 135mm rear hub, convertible to 142mm with end caps
- 142+ option specifically for Specialized frames, 10% stiffer than 135mm
- 32 spokes with radial/3-cross front lacing
- 32 spokes with 3-cross rear lacing

COMPONENT	2012 SBC P/N	2013 SBC P/N	DESCRIPTION
WHEELSET (135MM)	S125500013(F)/ S125500014(R) (Red Graphic)	S135500011(F/R) (White Graphic)	Control 29 SL wheelset, 135mm, convertible to 142mm
WHEELSET (142+)	S125500013(F)/ S125500016(R) (Red Graphic)	S135500012 (F/R) (White Graphic)	Control 29 SL wheelset, 142+ specific
FRONT HUB	NA		LFM11 Front hub, 32-hole
FRONT RIM	S123700001 (Red Graphic)	S133700003 (White Graphic)	Roval Control 29 SL carbon rim, 32-hole, 21mm inner width
FRONT SPOKE – RIGHT	S114600008	NA	DT Swiss Aerolite, 14g, Straight pull 289mm
FRONT SPOKE – RIGHT	S114600027		DT Swiss REVOLUTION 14/17 Gauge, Straight pull 289MM
FRONT SPOKE – LEFT	S114600011	NA	DT Swiss Aerolite, 14g, Straight pull 302mm
FRONT SPOKE – LEFT	S114600030		DT Swiss REVOLUTION 14/17 Gauge, Straight pull 302MM
REAR HUB 135MM	NA		Roval LFM03, 240-based hub, 32-hole, with 36-tooth quick engagement star ratchet, 135mm
REAR HUB 142+	NA		Roval LFM03, 240-based hub, 32-hole, with 36-tooth quick engagement star ratchet, 142+ (for Specialized frames only)
REAR RIM	S123700001 (Red Graphic)	S133700003 (White Graphic)	Roval Control 29 SL carbon rim, 32-hole, 21mm inner width
REAR SPOKE – DRIVESIDE	S114600028	NA	DT Swiss Aerolite, 14g, Straight pull 299mm
REAR SPOKE – DRIVESIDE	S114600028		DT Swiss REVOLUTION 14/17 Gauge, Straight pull 299MM
REAR SPOKE – NON-DRIVESIDE	S114600011	NA	DT Swiss Aerolite, 14g, Straight pull 302mm
REAR SPOKE – NON-DRIVESIDE	S114600030		DT Swiss REVOLUTION 14/17 Gauge, Straight pull 302MM
NIPPLES	S112900002 (Red)	S2027005 (Black)	DT Swiss HEXAGONAL PROLOCK ALLOY, 14G x 14MM
FRONT QR	3000-1061 (Set)		Roval, TI AXLE 100MM
REAR QR			Roval, TI AXLE 135MM
End Caps	S125900007		For LFM11 front hub, 28mm diameter, QR (for Rockshox forks)
End Caps	S125900009		For LFM11 front hub, 24mm diameter, QR (for Fox forks)
End Caps	S125900010		For LFM11 front hub, 15mm thru-axle caps
End Caps	S115900020 (R), S115900021 (L)		For DT-based Roval rear hub, to convert from 135mm to 142mm
VALVE	S135500007		Roval Tubeless-ready valve, with removable core
RIM TAPE	S135500002		Roval Tubeless-ready rim strip, 29" x 23mm width

## CONTROL 29 CARBON (135MM and 142+) MY2013

### FEATURES:

- XC race-focused wheelset
- 1,440g, including rim tape
- 29" carbon rims, 22mm inner width
- 28/24mm QR, 15mm/20mm thru-axle compatible front hub
- 135mm rear hub, convertible to 142mm with end caps
- 32 spokes with radial/3-cross front lacing
- 32 spokes with 3-cross rear lacing

COMPONENT	2013 SBC P/N	DESCRIPTION
WHEELSET (135MM)	S135500008 (F/R) (White Graphic)	Control 29 Carbon wheelset, 135mm, convertible to 142mm
FRONT HUB	NA	LFM07 Front hub, 32-hole
FRONT RIM	S133700002 (White Graphic)	Roval Control 29 Carbon rim, 32-hole, 22mm inner width
FRONT SPOKE – RIGHT	S134600002	DT Swiss Revolution 14/17 Gauge, Straight pull 280MM
FRONT SPOKE – LEFT	S134600003	DT Swiss Revolution 14/17 Gauge, Straight pull 298MM
REAR HUB 135MM	NA	Roval LFM03, 350-based hub, 32-hole, with 36-tooth quick engagement star ratchet, 135mm
REAR RIM	S133700002 (White Graphic)	Roval Control 29 Carbon rim, 32-hole, 22mm inner width
REAR SPOKE – DRIVESIDE	S134600003	DT Swiss Revolution 14/17 Gauge, Straight pull 298MM
REAR SPOKE – NON-DRIVESIDE	S124600016	DT Swiss Revolution 14/17 Gauge, Straight pull 301MM
NIPPLES	S2027005 (Black)	DT Swiss HEXAGONAL PROLOCK ALLOY, 14G x 14MM
FRONT QR	NA	Roval, steel AXLE 100MM
REAR QR		Roval, steel AXLE 135MM
End Caps	S125900004	For LFM07 front hub, 28mm diameter, QR (for Rockshox forks)
End Caps	S125900005	For LFM07 front hub, 24mm diameter, QR (for Fox forks)
End Caps	S125900006	For LFM07 front hub, 15mm thru-axle caps
End Caps	S125900003	For LFM07 front hub, 20mm thru-axle caps
End Caps	S115900020 (R), S115900021 (L)	For DT-based Roval rear hub, to convert from 135mm to 142mm
VALVE	S135500007	Roval Tubeless-ready valve, with removable core
RIM TAPE	S135500002	Roval Tubeless-ready rim strip, 26" x 23mm width



## CONTROL 29 (135MM and 142+) MY2012-13

### FEATURES:

- XC race-focused wheelset
- 1,770g, including rim tape
- 29" carbon rims, 19mm inner width
- 28/24mm QR, 15mm thru-axle compatible front hub
- 135mm rear hub, convertible to 142mm with end caps
- 32 spokes with radial/3-cross front lacing
- 32 spokes with 3-cross rear lacing

COMPONENT	2012 SBC P/N	2013 SBC P/N	DESCRIPTION
WHEELSET (135MM)	S125500005(F)/ S125500006 (R), (Red Graphic)	S135500011(F/R) (White Graphic)	Control 29 wheelset, 135mm, convertible to 142mm
WHEELSET (142+)	NA	S135500012(F/R) (White Graphic)	Control 29 wheelset, 142+ specific
FRONT HUB	NA		LFM06 Front hub, 32-hole
FRONT RIM	S123700015 (Red Graphic), S123700016 (Charcoal Graphic)	S133700019 (White Graphic)	Roval Control 29 M5 alloy rim, 32-hole, 19mm inner width
FRONT SPOKE – RIGHT	S124600017		DT Swiss REVOLUTION 14/17 Gauge, Straight pull 290MM
FRONT SPOKE – LEFT	S124600025		DT Swiss REVOLUTION 14/17 Gauge, Straight pull 303MM
REAR HUB 135MM	NA		Roval LFM03, 350-based hub, 32-hole, with 36-tooth quick engagement star ratchet, 135mm
REAR HUB 142+	NA		Roval LFM03, 350-based hub, 32-hole, with 36-tooth quick engagement star ratchet, 142+ (for Specialized frames only)
REAR RIM	S123700015 (Red Graphic), S123700016 (Charcoal Graphic)	S133700019 (White Graphic)	Roval Control 29 M5 alloy rim, 32-hole, 19mm inner width
REAR SPOKE – DRIVESIDE	S124600025		DT Swiss REVOLUTION 14/17 Gauge, Straight pull 303MM
REAR SPOKE – NON-DRIVESIDE	S124600026		DT Swiss REVOLUTION 14/17 Gauge, Straight pull 305MM
NIPPLES	S112900002 (Red)	S2027005 (Black)	DT Swiss HEXAGONAL PROLOCK ALLOY, 14G x 14MM
FRONT QR	NA		Roval, steel AXLE 100MM
REAR QR			Roval, steel AXLE 135MM
End Caps	S125900001		For LFM06 front hub, 28mm diameter, QR (for Rockshox forks)
End Caps	S125900002		For LFM06 front hub, 24mm diameter, QR (for Fox forks)
End Caps	S125900011		For LFM06 front hub, 15mm thru-axle caps
End Caps	S115900020 (R), S115900021 (L)		For DT-based Roval rear hub, to convert from 135mm to 142mm
VALVE	S135500007		Roval Tubeless-ready valve, with removable core
RIM TAPE	S135500001		Roval Tubeless-ready rim strip, 29" x 21mm width

## CONTROL TRAIL SL (135MM and 142+) MY2012-13

### FEATURES:

- XC Trail performance-focused wheelset
- 1,350g, including rim tape
- 26" carbon rims, 21mm inner width
- 28/24mm QR, 15mm thru-axle compatible front hub
- 135mm rear hub, convertible to 142mm with end caps
- 142+ option specifically for Specialized frames, 10% stiffer than 135mm
- 24 spokes with radial/3-cross front lacing
- 28 spokes with 3-cross rear lacing

COMPONENT	2012 SBC P/N	2013 SBC P/N	DESCRIPTION
WHEELSET (135MM)	S125500025 (F)/ S125500026 (R) (Red Graphic)	S135500017 (F/R) (White Graphic)	Control Trail SL wheelset, 135mm, convertible to 142mm
WHEELSET (142+)	S125500025 (F)/ S125500028 (R) (Red Graphic)	S135500018 (F/R) (White Graphic)	Control Trail SL wheelset, 142+ specific
FRONT HUB	NA		LFM11 Front hub, 28 Hole
FRONT RIM	S123700039 (Red Graphic)	S133700012 (White Graphic)	Roval Control Trail SL carbon rim, 24 hole, 21mm inner width
FRONT SPOKE – RIGHT	S114600001	NA	DT Swiss AEROLITE 14G, Straight pull 256mm
FRONT SPOKE – RIGHT	S114600020		DT Swiss REVOLUTION 14/17 Gauge, Straight pull 256MM
FRONT SPOKE – LEFT	S114600003	NA	DT Swiss AEROLITE 14G, Straight pull 267mm
FRONT SPOKE – LEFT	S114600021		DT Swiss REVOLUTION 14/17 Gauge, Straight pull 267MM
REAR HUB 135MM	NA		Roval LFM02, 240-based hub, 28h, with 36-tooth quick engagement star ratchet, 135mm
REAR HUB 142+	NA		Roval LFM02, 240-based hub, 28h, with 36-tooth quick engagement star ratchet, 142+ (for Specialized frames only)
REAR RIM	S123700040 (Red Graphic)	S135500018 (White Graphic)	Roval Control Trail SL carbon rim, 28 hole, 21mm inner width
REAR SPOKE – DRIVESIDE	S2026051	NA	DT Swiss AEROLITE 14G, Straight pull 272mm
REAR SPOKE – DRIVESIDE	S114600023		DT Swiss REVOLUTION 14/17 Gauge, Straight pull 272MM
REAR SPOKE – NON-DRIVESIDE	S114600005	NA	DT Swiss AEROLITE 14G, Straight pull 274mm
REAR SPOKE – NON-DRIVESIDE	S114600024		DT Swiss REVOLUTION 14/17 Gauge, Straight pull 274MM
NIPPLES	S112900002 (Red)	S2027005 (Black)	DT Swiss HEXAGONAL PROLOCK ALLOY, 14G x 14MM
FRONT QR	3000-1061 (Set)		Roval, TI AXLE 100MM
REAR QR			Roval, TI AXLE 135MM
End Caps	S125900007		For LFM11 front hub, 28mm diameter, QR (for Rockshox forks)
End Caps	S125900009		For LFM11 front hub, 24mm diameter, QR (for Fox forks)
End Caps	S125900010		For LFM11 front hub, 15mm thru-axle caps
End Caps	S115900020 (R), S115900021 (L)		For DT-based Roval rear hub, to convert from 135mm to 142mm
VALVE	S135500007		Roval Tubeless-ready valve, with removable core
RIM TAPE	S135500005		Roval Tubeless-ready rim strip, 26" x 23mm width



## CONTROL TRAIL (135MM and 142+) MY2012-13

### FEATURES:

- XC Trail performance-focused wheelset
- 1,640g, including rim tape
- 26" M5 alloy rims, 21mm inner width
- 28/24mm QR, 15mm thru-axle compatible front hub
- 135mm rear hub, convertible to 142mm with end caps
- 24 spokes with radial/3-cross front lacing
- 28 spokes with 3-cross rear lacing

COMPONENT	2012 SBC P/N	2013 SBC P/N	DESCRIPTION
WHEELSET (135MM)	S125500017 (F)/ S125500018 (R), (Charcoal Graphic)	S135500019 (F/R) (White Graphic)	Control Trail wheelset, 135mm, convertible to 142mm
FRONT HUB	NA		LFM06 Front hub, 24 Hole
FRONT RIM	S123700033 (Charcoal Graphic), S123700035 (Red Graphic)	S133700010 (White Graphic)	Roval Control Trail M5 alloy rim, 24 hole, 21mm inner width
FRONT SPOKE – RIGHT	S124600030		DT Swiss REVOLUTION 14/17 Gauge, Straight pull 257MM
FRONT SPOKE – LEFT	S124600015		DT Swiss REVOLUTION 14/17 Gauge, Straight pull 269MM
REAR HUB 135MM	NA		Roval LFM02, 350-based hub, 28h, with 36-tooth quick engagement star ratchet, 135mm
REAR HUB 142+	NA		Roval LFM02, 350-based hub, 28h, with 36-tooth quick engagement star ratchet, 142+ (for Specialized frames only)
REAR RIM	S123700034 (Charcoal Graphic), S123700036 (Red Graphic)	S133700011 (White Graphic)	Roval Control Trail M5 alloy rim, 28 hole, 21mm inner width
REAR SPOKE – DRIVESIDE	S114600025		DT Swiss REVOLUTION 14/17 Gauge, Straight pull 275MM
REAR SPOKE – NON-DRIVESIDE	S124600031		DT Swiss REVOLUTION 14/17 Gauge, Straight pull 276MM
NIPPLES	S2027005 (Black)		DT Swiss HEXAGONAL PROLOCK ALLOY, 14G x 14MM
FRONT QR	NA		Roval, steel AXLE 100MM
REAR QR			Roval, steel AXLE 135MM
End Caps	S125900001		For LFM06 front hub, 28mm diameter, QR (for Rockshox forks)
End Caps	S125900002		For LFM06 front hub, 24mm diameter, QR (for Fox forks)
End Caps	S125900011		For LFM06 front hub, 15mm thru-axle caps
End Caps	S115900020 (R), S115900021 (L)		For DT-based Roval rear hub, to convert from 135mm to 142mm
VALVE	S135500007		Roval Tubeless-ready valve, with removable core
RIM TAPE	S135500005		Roval Tubeless-ready rim strip, 26" x 23mm width

## CONTROL TRAIL 29 SL (135MM and 142+) MY2012-13

### FEATURES:

- XC Trail performance-focused wheelset
- 1,530g, including rim tape
- 29" carbon rims, 21mm inner width
- 28/24mm QR, 15mm/20mm thru-axle compatible front hub
- 135mm rear hub, convertible to 142mm with end caps
- 142+ option specifically for Specialized frames, 10% stiffer than 135mm
- 32 spokes with radial/3-cross front lacing
- 32 spokes with 3-cross rear lacing

COMPONENT	2012 SBC P/N	2013 SBC P/N	DESCRIPTION
WHEELSET (135MM)	S125500029(F)/ S125500030(R) (Red Graphic)	S135500014 (F/R) (White Graphic)	Control Trail 29 SL wheelset, 135mm, convertible to 142mm
WHEELSET (142+)	S125500029(F)/ S125500032 (R) (Red Graphic)	S135500015 (F/R) (White Graphic)	Control Trail 29 SL wheelset, 142+ specific
FRONT HUB	NA		LFM07 Front hub, 32-hole
FRONT RIM	S123700041 (Red Graphic)	S133700009 (White Graphic)	Roval Control Trail 29 SL carbon rim, 32-hole, 21mm inner width
FRONT SPOKE – RIGHT	S124600032		DT Swiss Super Comp 15/16 Gauge, Straight pull 283MM
FRONT SPOKE – LEFT	S124600034		DT Swiss Super Comp 15/16 Gauge, Straight pull 301MM
REAR HUB 135MM	NA		Roval LFM03, 240-based hub, 32-hole, with 36-tooth quick engagement star ratchet, 135mm
REAR HUB 142+	NA		Roval LFM03, 240-based hub, 32-hole, with 36-tooth quick engagement star ratchet, 142+ (for Specialized frames only)
REAR RIM	S123700041 (Red Graphic)	S133700009 (White Graphic)	Roval Control Trail 29 SL carbon rim, 32-hole, 21mm inner width
REAR SPOKE – DRIVESIDE	S124600033		DT Swiss Super Comp 15/16 Gauge, Straight pull 299MM
REAR SPOKE – NON-DRIVESIDE	S2026037		DT Swiss Super Comp 15/16 Gauge, Straight pull 302MM
NIPPLES	S2027009 (Red)	S2027006 (Black)	DT Swiss HEXAGONAL PROLOCK ALLOY, 15G x 14MM
FRONT QR	3000-1061 (Set)		Roval, TI AXLE 100MM
REAR QR			Roval, TI AXLE 135MM
End Caps	S125900004		For LFM07 front hub, 28mm diameter, QR (for Rockshox forks)
End Caps	S125900005		For LFM07 front hub, 24mm diameter, QR (for Fox forks)
End Caps	S125900006		For LFM07 front hub, 15mm thru-axle caps
End Caps	S125900003		For LFM07 front hub, 20mm thru-axle caps
End Caps	S115900020 (R), S115900021 (L)		For DT-based Roval rear hub, to convert from 135mm to 142mm
VALVE	S135500007		Roval Tubeless-ready valve, with removable core
RIM TAPE	S135500002		Roval Tubeless-ready rim strip, 29" x 23mm width



## CONTROL TRAIL 29 (135MM) MY2012-13

### FEATURES:

- XC Trail performance-focused wheelset
- 1,860g, including rim tape
- 29" M5 alloy rims, 21mm inner width
- 28/24mm QR, 15mm/20mm thru-axle compatible front hub
- 135mm rear hub, convertible to 142mm with end caps
- 142+ option specifically for Specialized frames, 10% stiffer than 135mm
- 32 spokes with radial/3-cross front lacing
- 32 spokes with 3-cross rear lacing

COMPONENT	2012 SBC P/N	2013 SBC P/N	DESCRIPTION
WHEELSET (135MM)	S125500021(F)/ S125500022 (R) (Charcoal Graphic)	S133700008 (F/R) (White Graphic)	Control Trail 29 wheelset, 135mm, convertible to 142mm
FRONT HUB	NA		LFM07 Front hub, 32-hole
FRONT RIM	S123700037 (Red Graphic), S123700038 (Charcoal Graphic)	S133700008 (White Graphic)	Roval Control Trail 29 M5 alloy rim, 32-hole, 21mm inner width
FRONT SPOKE – RIGHT	S124600024		DT Swiss Super Comp 15/16 Gauge, Straight pull 285MM
FRONT SPOKE – LEFT	S2026037		DT Swiss Super Comp 15/16 Gauge, Straight pull 302MM
REAR HUB 135MM	NA		Roval LFM03, 350-based hub, 32-hole, with 36-tooth quick engagement star ratchet, 135mm
REAR RIM	S123700037 (Red Graphic), S123700038 (Charcoal Graphic)	S133700008 (White Graphic)	Roval Control Trail 29 M5 alloy rim, 32-hole, 21mm inner width
REAR SPOKE – DRIVESIDE	S2026037		DT Swiss Super Comp 15/16 Gauge, Straight pull 302MM
REAR SPOKE – NON-DRIVESIDE	S2026038		DT Swiss Super Comp 15/16 Gauge, Straight pull 304MM
NIPPLES	S2027006 (Black)		DT Swiss HEXAGONAL PROLOCK ALLOY, 14G x 14MM
FRONT QR	NA		Roval, steel AXLE 100MM
REAR QR			Roval, steel AXLE 135MM
End Caps	S125900004		For LFM07 front hub, 28mm diameter, QR (for Rockshox forks)
End Caps	S125900005		For LFM07 front hub, 24mm diameter, QR (for Fox forks)
End Caps	S125900006		For LFM07 front hub, 15mm thru-axle caps
End Caps	S125900003		For LFM07 front hub, 20mm thru-axle caps
End Caps	S115900020 (R), S115900021 (L)		For DT-based Roval rear hub, to convert from 135mm to 142mm
VALVE	S135500007		Roval Tubeless-ready valve, with removable core
RIM TAPE	S135500002		Roval Tubeless-ready rim strip, 29" x 23mm width

## TRAVERSE SL (135MM and 142+) MY2013

### FEATURES:

- All Mountain performance focused wheelset
- 1,530g, including rim tape
- 26" carbon rims, 22mm inner width
- 28/24mm QR, 15mm/20mm thru-axle compatible front hub
- 135mm rear hub, convertible to 142mm with end caps
- 142+ option specifically for Specialized frames, 10% stiffer than 135mm
- 27 spokes with radial/3-cross front lacing
- 32 spokes with 3-cross rear lacing

COMPONENT	2013 SBC P/N	DESCRIPTION
WHEELSET (135MM)	S135500023 (F/R) (White Graphic)	Traverse SL wheelset, 135mm, convertible to 142mm
WHEELSET (142+)	S135500024 (F/R) (White Graphic)	Traverse SL wheelset, 142+ specific
FRONT HUB	NA	LFM07 Front hub, 27-hole
FRONT RIM	S133700020	Roval Traverse SL carbon rim, 27-hole, 22mm inner width
FRONT SPOKE - RIGHT	S2026059	DT Swiss Super Comp 15/16 Gauge, Straight pull 252MM
FRONT SPOKE - LEFT	S134600006	DT Swiss Super Comp 15/16 Gauge, Straight pull 273MM
REAR HUB 135MM	NA	Roval LFM03, 240-based hub, 32-hole, with 36-tooth quick engagement star ratchet, 135mm
REAR HUB 142+	NA	Roval LFM03, 240-based hub, 32-hole, with 36-tooth quick engagement star ratchet, 142+ (for Specialized frames only)
REAR RIM	S133700021	Roval Traverse SL carbon rim, 32-hole, 22mm inner width
REAR SPOKE - DRIVESIDE	S2026011	DT Swiss Super Comp 15/16 Gauge, Straight pull 268MM
REAR SPOKE - NON-DRIVESIDE	S114600036	DT Swiss Super Comp 15/16 Gauge, Straight pull 272MM
NIPPLES	S2027005 (Black)	DT Swiss HEXAGONAL PROLOCK ALLOY, 15G x 14MM
FRONT QR	3000-1061 (Set)	Roval, TI AXLE 100MM
REAR QR		Roval, TI AXLE 135MM
End Caps	S125900004	For LFM07 front hub, 28mm diameter, QR (for Rockshox forks)
End Caps	S125900005	For LFM07 front hub, 24mm diameter, QR (for Fox forks)
End Caps	S125900006	For LFM07 front hub, 15mm thru-axle caps
End Caps	S125900003	For LFM07 front hub, 20mm thru-axle caps
End Caps	S115900020 (R), S115900021 (L)	For DT-based Roval rear hub, to convert from 135mm to 142mm
VALVE	S135500007	Roval Tubeless-ready valve, with removable core
RIM TAPE	S135500006	Roval Tubeless-ready rim strip, 26" x 25mm width



## TRAVERSE (135MM) MY2012-13

### FEATURES:

- All Mountain performance focused wheelset
- 1,680g, including rim tape
- 26" M5 alloy rims, 22mm inner width
- 28/24mm QR, 15mm/20mm thru-axle compatible front hub
- 135mm rear hub, convertible to 142mm with end caps
- 142+ option specifically for Specialized frames, 10% stiffer than 135mm
- 27 spokes with radial/3-cross front lacing
- 32 spokes with 3-cross rear lacing

COMPONENT	2012 SBC P/N	2013 SBC P/N	DESCRIPTION
WHEELSET (135MM)	S125500033(F)/ S125500034(R), (White Graphic)	S135500025 (F/R) (White Graphic)	Traverse wheelset, 135mm, convertible to 142mm
FRONT HUB	NA		LFM07 Front hub, 27-hole
FRONT RIM	S123700042 (White Graphic)	S133700017 (White Graphic)	Roval Traverse M5 alloy rim, 27-hole, 24mm inner width
FRONT SPOKE - RIGHT	S124600022		DT Swiss Super Comp 15/16 Gauge, Straight pull 254MM
FRONT SPOKE - LEFT	S124600023		DT Swiss Super Comp 15/16 Gauge, Straight pull 274MM
REAR HUB 135MM	NA		Roval LFM03, 350-based hub, 32-hole, with 36-tooth quick engagement star ratchet, 135mm
REAR RIM	S123700043 (White Graphic)	S133700018 (White Graphic)	Roval Traverse M5 alloy rim, 32-hole, 24mm inner width
REAR SPOKE - DRIVESIDE	S114600036		DT Swiss Super Comp 15/16 Gauge, Straight pull 272MM
REAR SPOKE - NON-DRIVESIDE	S124600023		DT Swiss Super Comp 15/16 Gauge, Straight pull 274MM
NIPPLES	S2027005 (Black)		DT Swiss HEXAGONAL PROLOCK ALLOY, 15G x 14MM
FRONT QR	NA		Roval, steel AXLE 100MM
REAR QR			Roval, steel AXLE 135MM
End Caps	S125900004		For LFM07 front hub, 28mm diameter, QR (for Rockshox forks)
End Caps	S125900005		For LFM07 front hub, 24mm diameter, QR (for Fox forks)
End Caps	S125900006		For LFM07 front hub, 15mm thru-axle caps
End Caps	S125900003		For LFM07 front hub, 20mm thru-axle caps
End Caps	S115900020 (R), S115900021 (L)		For DT-based Roval rear hub, to convert from 135mm to 142mm
VALVE	S135500007		Roval Tubeless-ready valve, with removable core
RIM TAPE	S135500006		Roval Tubeless-ready rim strip, 26" x 25mm width

## TRAVERSE 29 (135MM) MY2012-13

### FEATURES:

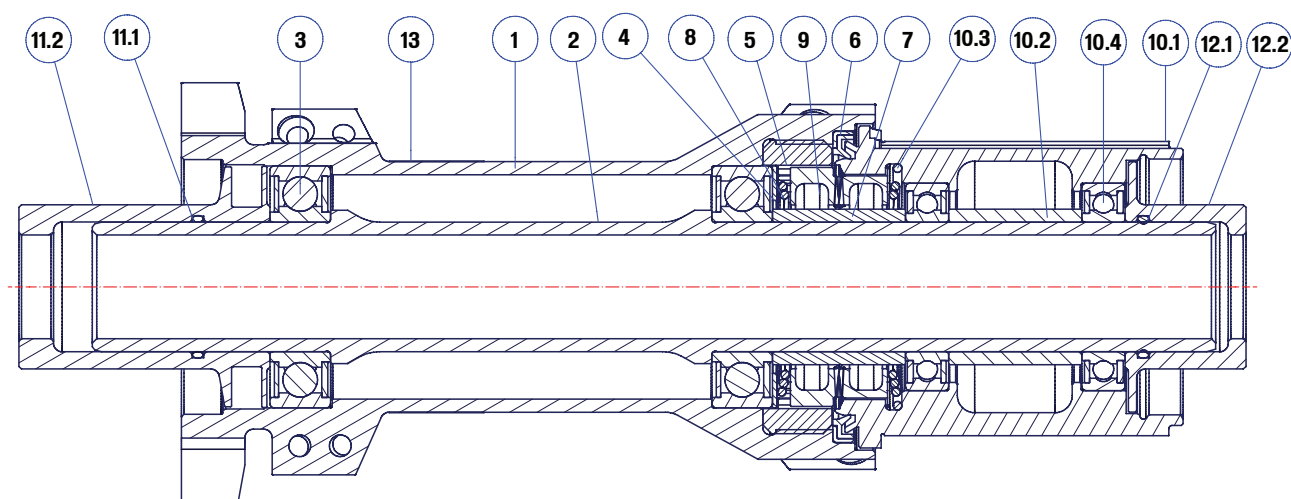
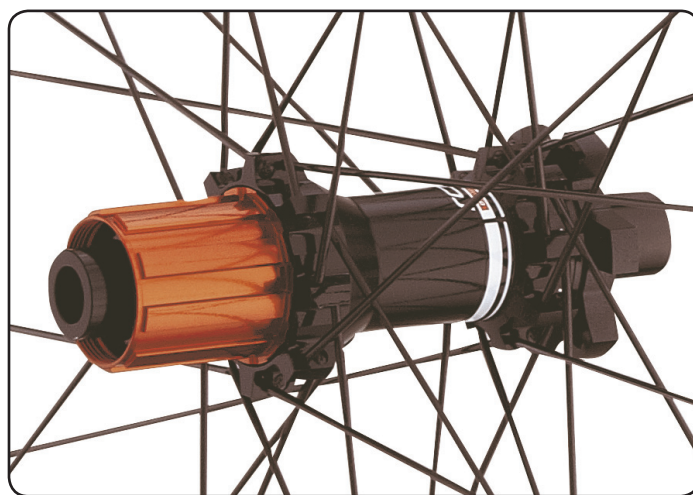
- All Mountain performance focused wheelset
- 1,860g, including rim tape
- 29" M5 alloy rims, 24mm inner width
- 28/24mm QR, 15mm/20mm thru-axle compatible front hub
- 135mm rear hub, convertible to 142mm with end caps
- 32 spokes with radial/3-cross front lacing
- 32 spokes with 3-cross rear lacing

COMPONENT	2012 SBC P/N	2013 SBC P/N	DESCRIPTION
WHEELSET (135MM)	S125500037(F)/ S125500038(R), (Charcoal Graphic)	S135500022 (F/R) (White Graphic)	Traverse 29 wheelset, 135mm, convertible to 142mm
FRONT HUB	NA		LFM07 Front hub, 32-hole
FRONT RIM	S123700044 (Charcoal Graphic)	S133700015 (White Graphic)	Roval Traverse 29 M5 alloy rim, 32-hole, 24mm inner width
FRONT SPOKE – RIGHT	S124600024		DT Swiss Super Comp 15/16 Gauge, Straight pull 285MM
FRONT SPOKE – LEFT	S124600025		DT Swiss Super Comp 15/16 Gauge, Straight pull 303MM
REAR HUB 135MM	NA		Roval LFM03, 350-based hub, 32-hole, with 36-tooth quick engagement star ratchet, 135mm
REAR RIM	S123700044 (Charcoal Graphic)	S133700015 (White Graphic)	Roval Traverse 29 M5 alloy rim, 32-hole, 24mm inner width
REAR SPOKE – DRIVESIDE	S124600025		DT Swiss Super Comp 15/16 Gauge, Straight pull 303MM
REAR SPOKE – NON-DRIVESIDE	S124600026		DT Swiss Super Comp 15/16 Gauge, Straight pull 305MM
NIPPLES	S2027005 (Black)		DT Swiss HEXAGONAL PROLOCK ALLOY, 15G x 14MM
FRONT QR	NA		Roval, steel AXLE 100MM
REAR QR			Roval, steel AXLE 135MM
End Caps	S125900004		For LFM07 front hub, 28mm diameter, QR (for Rockshox forks)
End Caps	S125900005		For LFM07 front hub, 24mm diameter, QR (for Fox forks)
End Caps	S125900006		For LFM07 front hub, 15mm thru-axle caps
End Caps	S125900003		For LFM07 front hub, 20mm thru-axle caps
End Caps	S115900020 (R), S115900021 (L)		For DT-based Roval rear hub, to convert from 135mm to 142mm
VALVE	S135500007		Roval Tubeless-ready valve, with removable core
RIM TAPE	S135500003		Roval Tubeless-ready rim strip, 26" x 25mm width

## LFM02/03 REAR HUB, 240-BASED DESIGN, 142+

### ALSO FOUND ON:

- Control Trail SL 142+ (28-hole)
- Control 29 SL 142+/Control Trail 29 SL 142+ (32-hole)
- Traverse SL 142+ (32-hole)

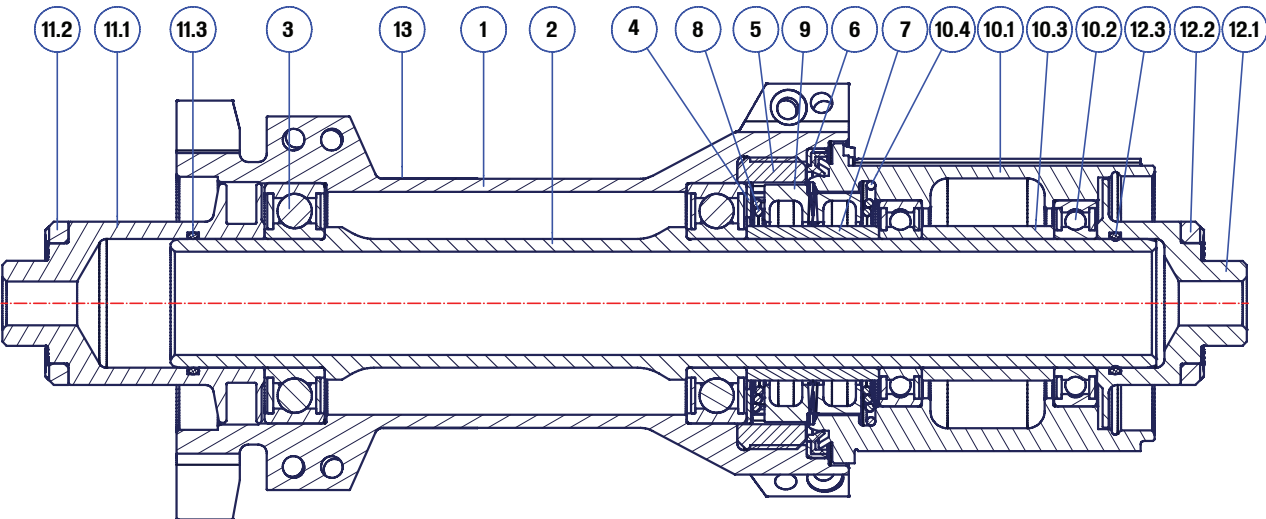
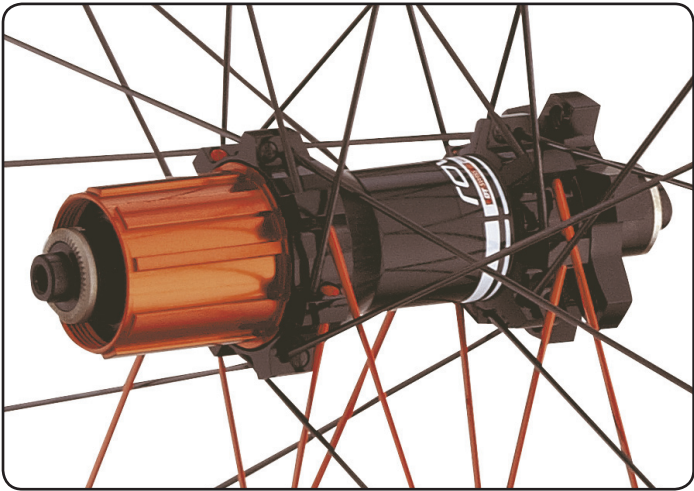


#	DESCRIPTION	WEIGHT (g)	QTY.	DT SWISS P/N
1	RW HUB SHELL DBIS 142MM 28H BLACK	70.08	1	HRH04428S2355C
2	RW AXLE Ø15/44.15MM	24.24	1	HCCXXX0022412C
3	BALL BEARING 6902 Ø15/28X7MM (SD/CD)	15.1	2	HSBXXX00N1468S
4	SHIM RING Ø28/20X0.5MM	1.06	1	HCDXXX00S1083S
5	RING NUT ALUMINIUM	6.2	1	HCDXXX00S1110S
6	SEAL HUB SHELL/ROTOR	2.3	1	HSOXXX00N1031S
7	SPACER ALU 15.4MM	3.23	1	HCDXXX00S1077S
8	SPRING	1.12	2	HXDXXX00N1087S
9	STAR RATCHET 36 SUPERLIGHT	7.11	2	HCDXXX00N2884S
10	ROTOR AP ASL RED BB_STANDARD	48.57	1	HWRABX00R1239S
10.1	ROTOR ET ASL RED	31.8	1	HCRXXX00R1239S
10.2	SPACE ALU 15.4MM	3.23	1	HCDXXX00S1077S
10.3	RETAINING RING (ROTOR)	0.52	1	HXDXXX00N1214S
10.4	BALL BEARING 6802 Ø15/24X5MM (SD/CD)	6.5	2	HSBXXX00N1244S
11	RW ADAPTER AP 142L TA12 BLACK	10.74	1	HWA00100S2193C
11.1	O-RING SEAL Ø15X1MM, 70 SHORE	0.05	1	HSOXXX00X1258S
11.2	RW ADAPTER SP 142L DBIS TA12 BLACK	10.69	1	HCA00100S2193C
12	RW ADAPTER AP 142R TA12 BLACK	5.48	1	HWA00100S2413C
12.1	O-RING SEAL Ø15X1MM, 70 SHORE	0.05	1	HSOXXX00X1258S
12.2	RW ADAPTER SP 142R DBIS TA12 BLACK	5.43	1	HCA00100S2413C
13	RW STICKER CONTROL 142MM	0.07	1	HXSXXX00W2411C

LFM02/03 REAR HUB, 240-BASED DESIGN, 135MM

ALSO FOUND ON:

- Control SL/Control Trail SL (28-hole)
- Control 29 SL/Control Trail 29 SL (32-hole)
- Traverse SL (32-hole)



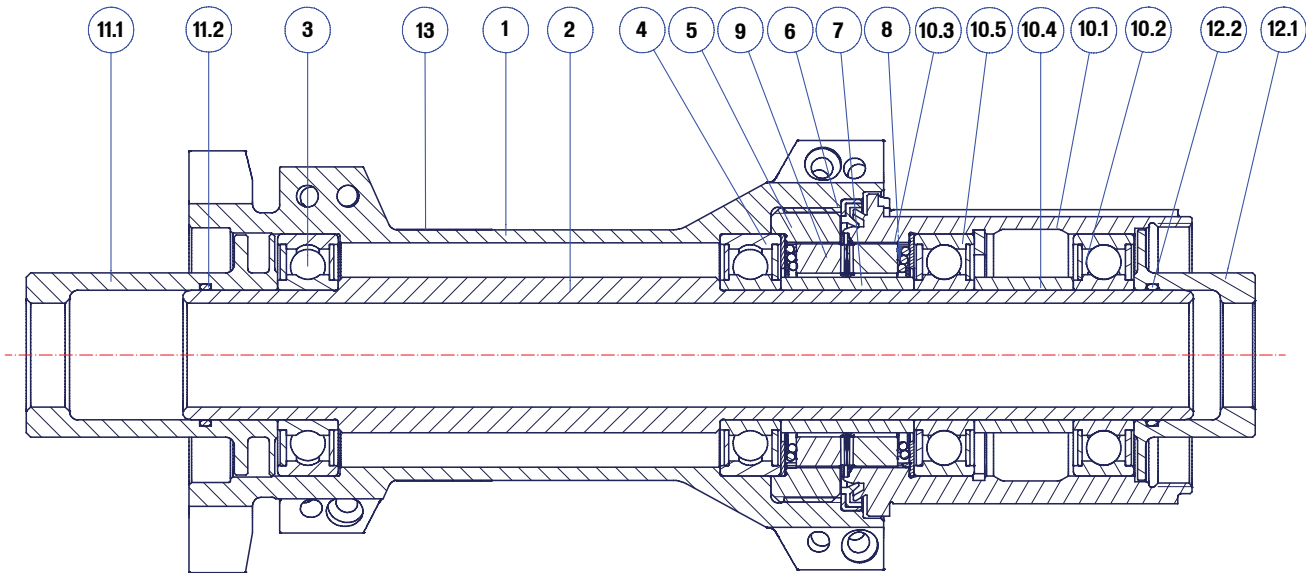
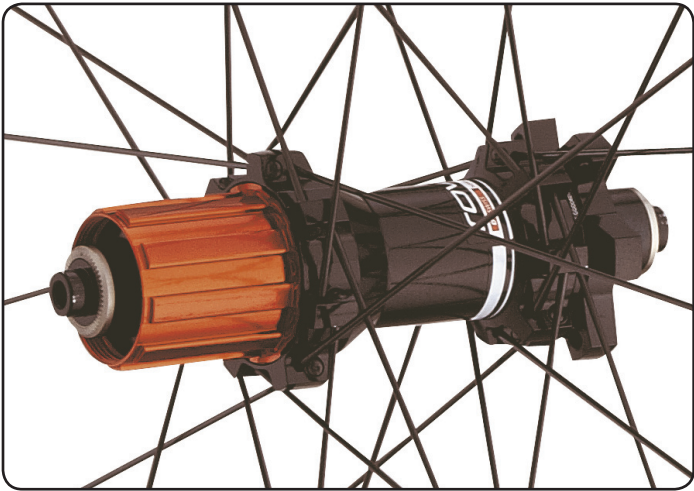
#	DESCRIPTION	WEIGHT (g)	QTY.	DT SWISS P/N
1	RW HUB SHELL DBIS 135MM 32-HOLE BLACK	69.70	1	HCH04432S2367C
2	RW AXLE Ø15/4.21MM	21.55	1	HCCXXX00S2216S
3	BALL BEARING 6902 Ø15/28X7MM (SD/CD)	15.1	2	HSBXXX00N1468S
4	SHIM RING Ø28/20X0.5MM	1.06	1	HCDXXX00S1083S
5	RING NUT ALUMINUM	6.2	1	HCDXXX00S1110S
6	SEAL HUB SHELL/ROTOR	2.3	1	HSOXXX00N1031S
7	SPACER ALU 15.4MM	3.23	1	HCDXXX00S1077S
8	SPRING	1.12	2	HXDXXX00N1087S
9	STAR RATCHET 36 SUPERLIGHT	7.11	2	HCDXXX00N2884S
10	ROTOR AP ASL RED BB_STANDARD	48.57	1	HWRABX00R1239S
10.1	ROTOR ET ASL RED	31.8	1	HCRXXX00R1239S
10.2	BALL BEARING 6802 Ø15/24X5MM (SD/CD)	6.5	2	HSBXXX00N1244S
10.3	SPACER ALU 15.4MM	3.23	1	HCDXXX00S1077S
10.4	RETAINING RING (ROTOR)	0.52	1	HXDXXX00N1214S
11	RW ADAPTER AP 135L QR BLACK	13.34	1	HWAXXX00S1528S
11.1	RW ADAPTER LEFT SIDE, 135MM	11.1	1	HCAXXX00S1528S
11.2	KNURLED DISC Ø14X19MM	2.19	1	HXDXXX00N4005S
11.3	O-RING SEAL Ø15X1MM, 70 SHORE	0.05	1	HSOXXX00X1258S
12	RW ADAPTER AP XXXR QR BLACK	8.2	1	HWAXXX00S1043S
12.1	RW ADAPTER RIGHT SIDE, 130/135MM, BLACK	5.96	1	HCAXXX00S1043S
12.2	KNURLED DISC Ø14X19MM	2.19	1	HXDXXX00N4005S
12.3	O-RING SEAL Ø15MM, 90 SHORT	0.05	1	HSOXXX00S1082S
13	RW STICKER CONTROL 135MM	0.07	1	HXSXXX00W2410C



LFM02/03 REAR HUB, 350-BASED DESIGN, 142+

ALSO FOUND ON:

- Control/Control Trail (28-hole)
- Control 29/Control Trail 29 (32-hole)
- Traverse SL/Traverse 29 (32-hole)

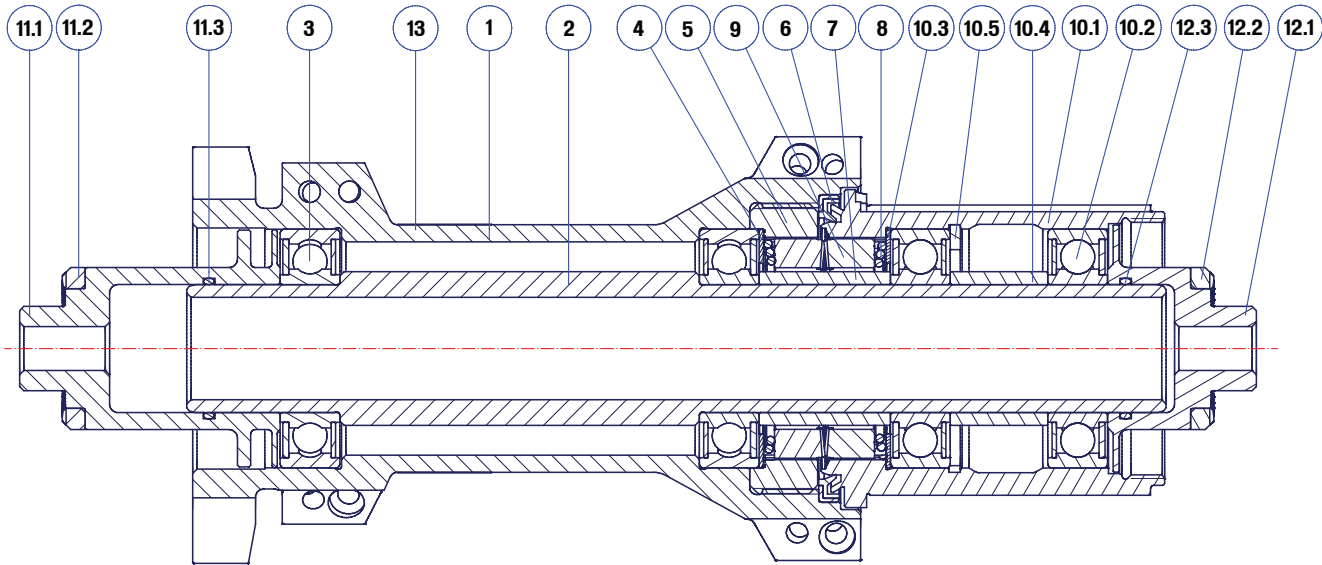
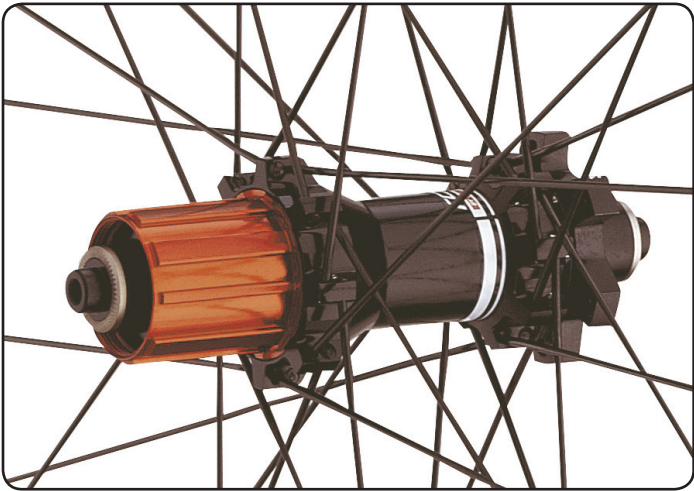


#	DESCRIPTION	WEIGHT (g)	QTY.	DT SWISS P/N
1	RW HUB SHELL DBIS 142MM 28H BLACK	70.08	1	HCH04428S2355C
2	RW AXLE Ø18/44.1MM	30.19	1	HCCXXX00N4871C
3	BALL BEARING 6902 Ø15/28X7MM (SD/CD) L	15.1	3	HSBXXX00N2336S
4	SHIM RING Ø28/20X0.5MM	1.06	1	HCDXXX00S1083S
5	RING NUT STEEL	17.3	1	HXDXXX00N1131S
6	SEAL HUB SHELL/ROTOR	2.3	1	HSOXXX00N1031S
7	SPACER ALU 15.4MM	3.24	1	HRDXXX00N4636S
8	SPRING	1.12	2	HXDXXX00N1087S
9	STAR RATCHET 36	11.89	2	HCDXXX00N2573S
10	ROTOR AP AS RED BB_STANDARD L (WITHOUT DUST CAP)	61.37	1	HWRABL00R1074S
10.1	ROTOR SP AS RED	26.06	1	HCRBBX00R1074S
10.2	BALL BEARING 6902 Ø15/28X7MM (SD/CD) L	15.1	2	HSBXXX00N2336S
10.3	SHIM RING Ø28/20X0.5MM	1.06	1	HCDXXX00S1083S
10.4	SPACE ALU 11.4MM (ROTOR SHIMANO)	2.42	1	HRDXXX00N1078S
10.5	CIRCLIP DIN 472	1.63	1	HSDXXX00N1084S
11	RW ADAPTER AP 142L TA12 BLACK	11.44	1	HWAXXX00S4648S
11.1	RW ADAPTER SP 142L TA12 BLACK	11.39	1	HCAXXX00S4648S
11.2	O-RING SEAL Ø15X1MM, 70 SHORE	0.05	1	HSOXXX00X1258S
12	RW ADAPTER AP 142R TA12 BLACK SPEC	5.83	1	HWAXXX00S2481C
12.1	RW ADAPTER SP 142R DBIS TA12 BLACK SPEC	5.78	1	HCA00100S2481C
12.2	O-RING SEAL Ø15X1MM, 70 SHORE	0.05	1	HSOXXX00X1258S
13	RW STICKER CONTROL 142MM	0.07	1	HXSXXX00W2411C

LFM02/03 REAR HUB, 350-BASED DESIGN, 135MM

ALSO FOUND ON:

- Control/Control Trail (28-hole)
- Control 29/Control Trail 29 (32-hole)
- Traverse /Traverse 29 (32-hole)

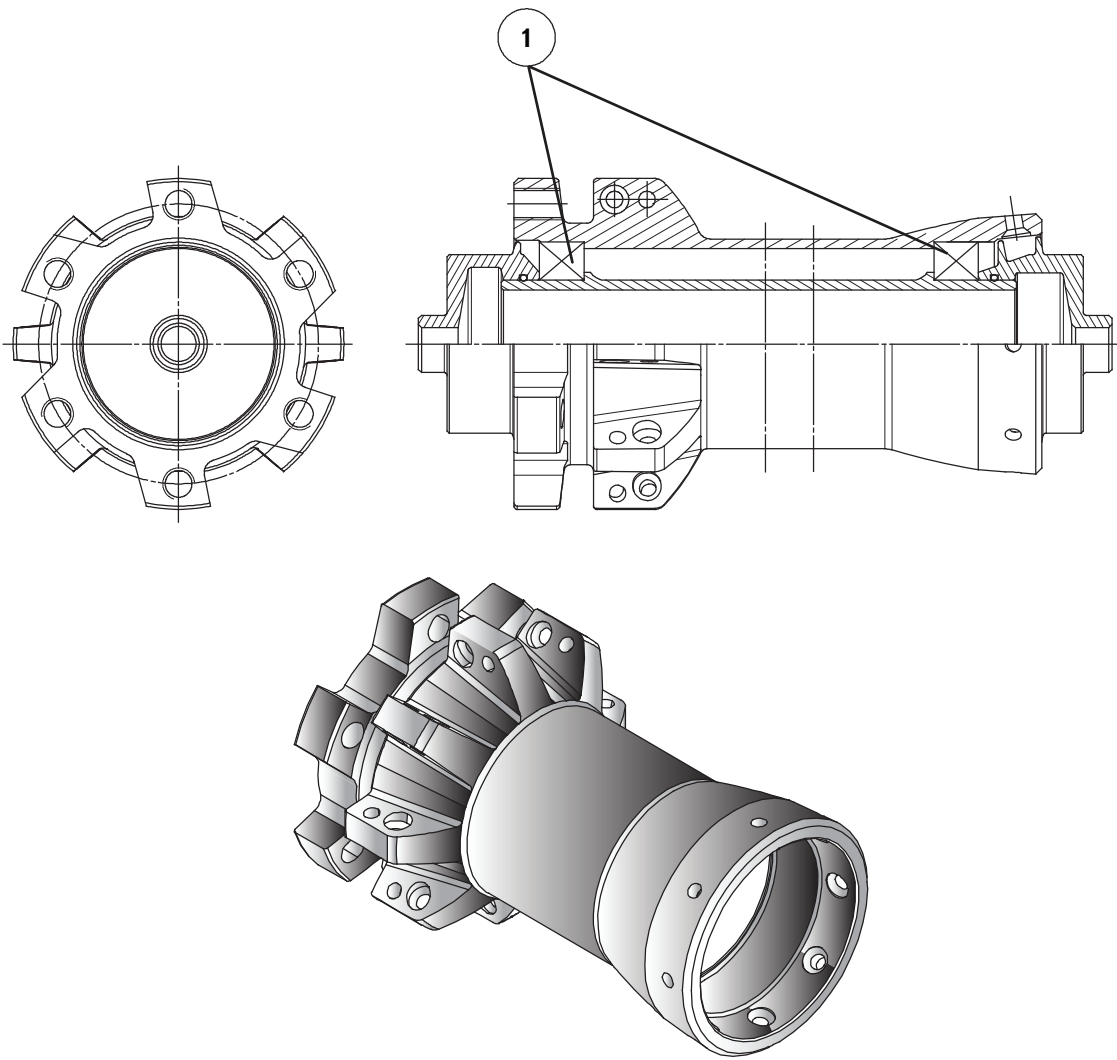


#	DESCRIPTION	WEIGHT (g)	QTY.	DT SWISS P/N
1	RW HUB SHELL DBIS 135MM 28H BLACK	74.3	1	HCH04428S4783C
2	RW AXLE Ø18/42.1MM	29.4	1	HCCXXX00N4635S
3	BALL BEARING 6902 Ø15/28X7MM (SD/CD) L	15.1	2	HSBXXX00N2336S
4	SHIM RING Ø28/20X0.5MM	1.06	1	HCDXXX00S1083S
5	RING NUT STEEL	17.3	1	HXDXXX00N1131S
6	SEAL HUB SHELL/ROTOR	2.3	1	HSOXXX00N1031S
7	SPACER ALU 15.4MM	3.22	1	HRDXXX00N4636S
8	SPRING	1.12	2	HXDXXX00N1087S
9	STAR RATCHET	11.81	2	HCDXXX00N1167S
10	ROTOR SP AS RED BB_STANDARD L (WITHOUT DUST CAP)	61.38	1	HWRABL00R1074S
10.1	ROTOR SP AS RED	26.07	1	HCRBBX00R1074S
10.2	BALL BEARING 6902 Ø15/28X7MM (SD/CD) L	15.1	2	HSBXXX00N2336S
10.3	SHIM RING Ø28/20X0.5MM	1.06	1	HCDXXX00S1083S
10.4	SPACER ALU 11.4MM (ROTOR SHIMANO)	2.42	1	HRDXXX00N1078S
10.5	CIRCLIP DIN 472	1.63	1	HSDXXX00N1084S
11	RW ADAPTER AP 135L QR BLACK	13.89	1	HWAXXX00S4644S
11.1	RW ADAPTER SP 135L QR BLACK	11.65	1	HCAXXX00S4644S
11.2	KNURLED DISC Ø14X19MM	2.19	1	HXDXXX00N4005S
11.3	O-RING SEAL Ø15X1MM, 70 SHORE	0.05	1	HSOXXX00X1258S
12	RW ADAPTER AP XXXR QR BLACK	8.35	1	HWAXXX00S4643S
12.1	RW ADAPTER SP XXXR QR BLACK	6.11	1	HCAXXX00S4643S
12.2	KNURLED DISC Ø14X19MM	2.19	1	HXDXXX00N4005S
12.3	O-RING SEAL Ø15X1MM, 90 SHORE	0.05	1	HSOXXX00S1082S
13	RW STICKER CONTROL 135MM	0.07	1	HXSXXX00W2410C

LFM06 FRONT HUB

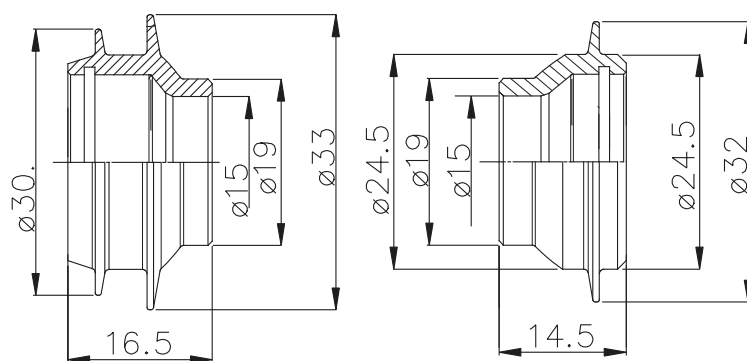
FOUND ON:

- Control 29
- Control Trail 26
- Control 26

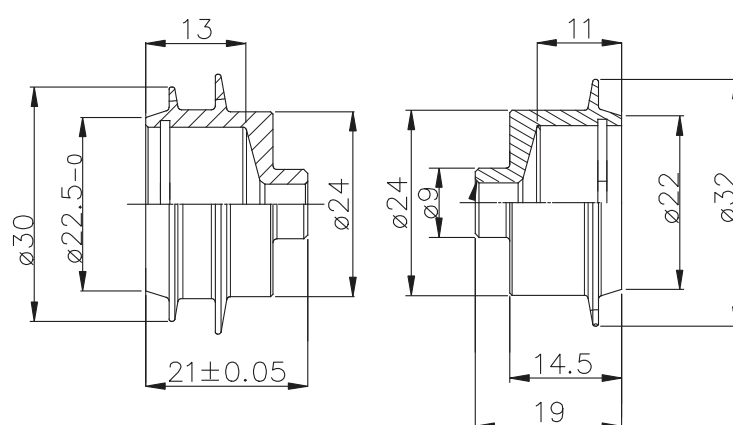


#	P/N	BEARING #	DESCRIPTION
1	S2025009	6804	Cartridge bearing to fit LFM07 front hub (left side) 1 per hub, LFM06 (both sides), 20x32x7

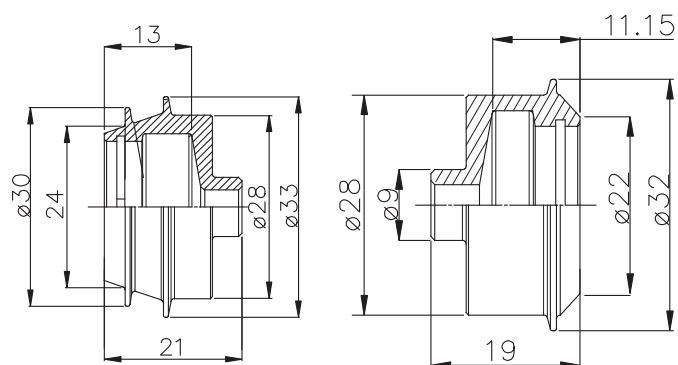
# LFM06 END CAPS



**15MM THRU-AXLE**  
P/N: S125900011



**24MM QR**  
P/N: S125900002



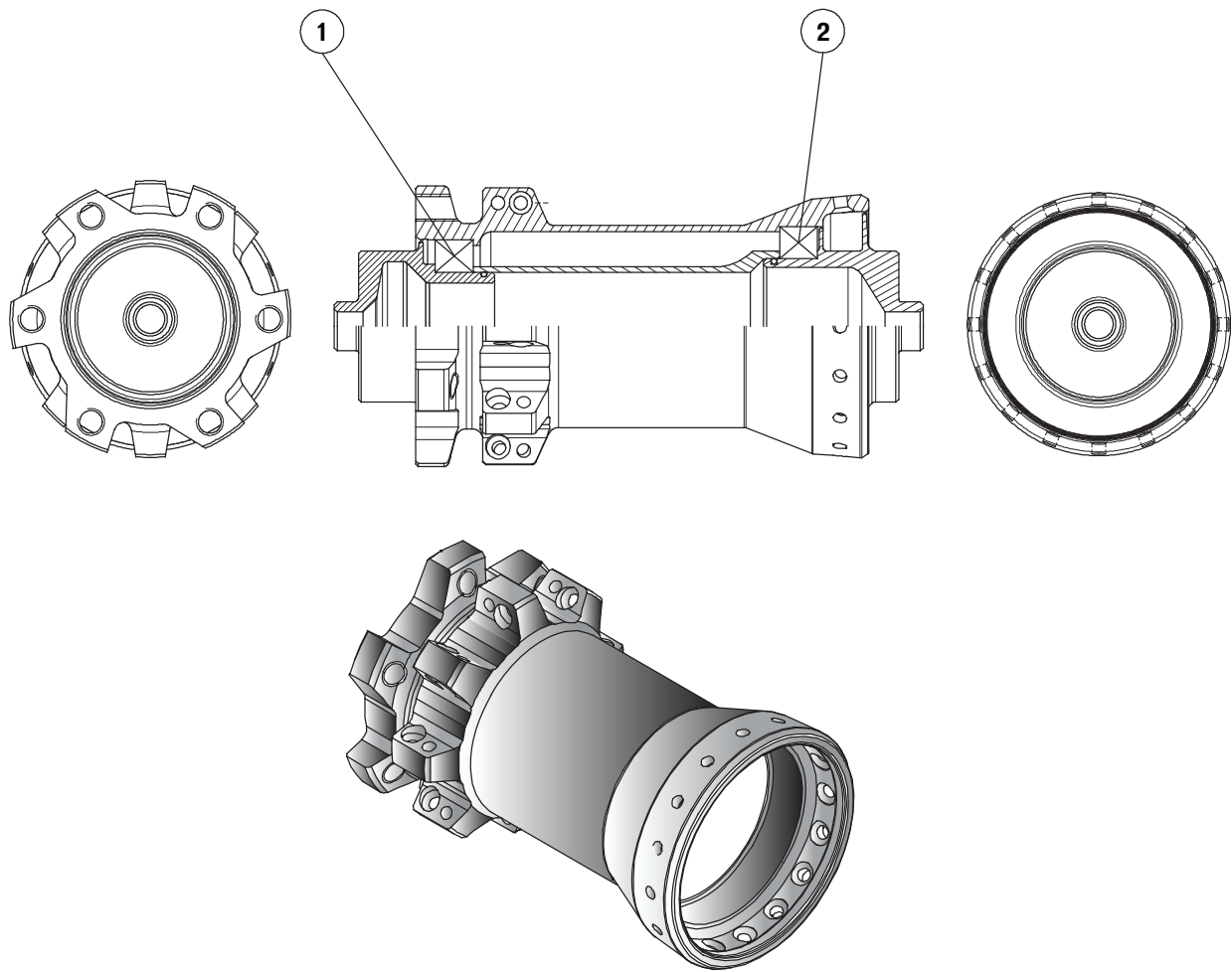
**28MM QR**  
P/N: S125900001



LFM07 FRONT HUB

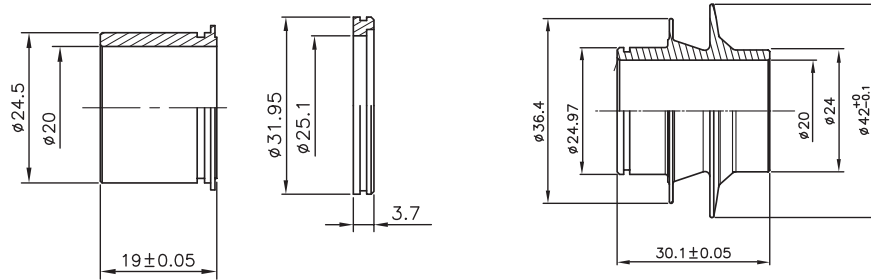
FOUND ON:

- Traverse
- Control Trail 29
- Control 29 Carbon

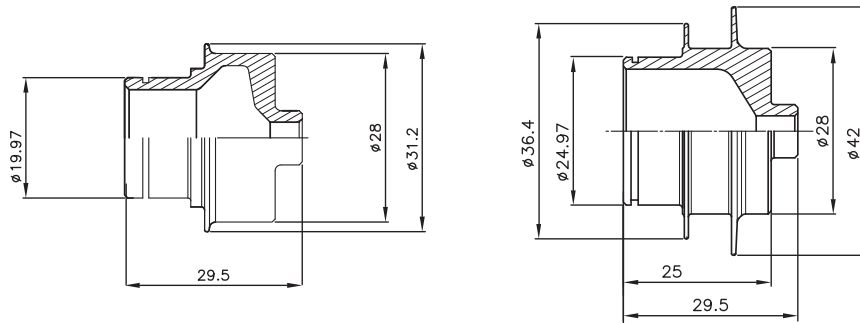


#	P/N	BEARING #	DESCRIPTION
1	S2025009	6804	Cartridge bearing to fit LFM07 front hub (left side) 1 per hub, LFM06 (both sides), 20x32x7
2	S2025005	6805	Cartridge bearing to fit LFM07 front hub (Right side) 1 per hub, 25x37x7

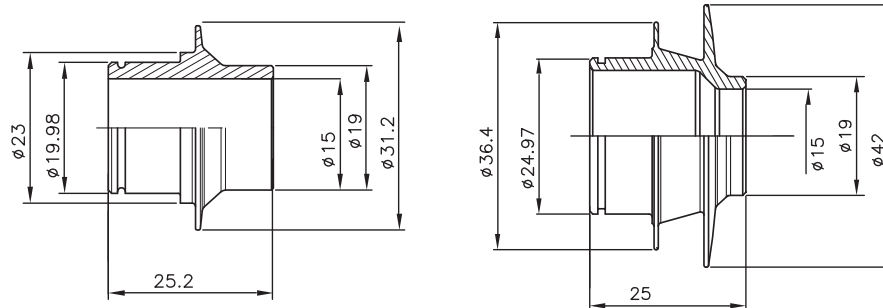
# LFM07 END CAPS



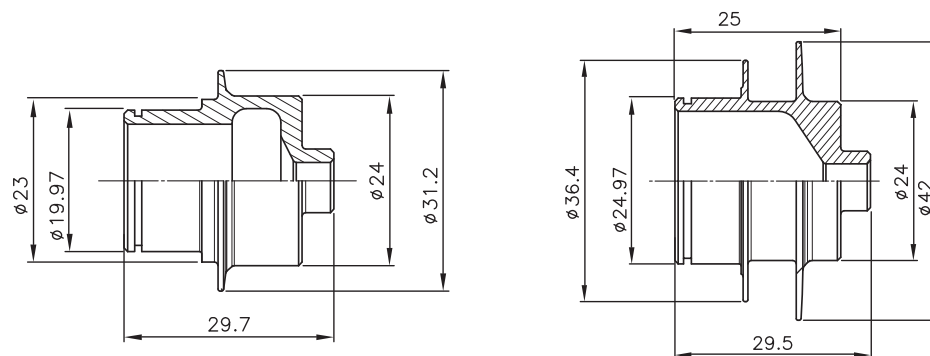
**LFM07 END CAPS, 20MM THRU-AXLE**  
P/N: S125900003



**LFM07 END CAPS, 28MM QR**  
P/N: S125900004



**LFM07 END CAPS, 15MM THRU-AXLE**  
P/N: S125900006

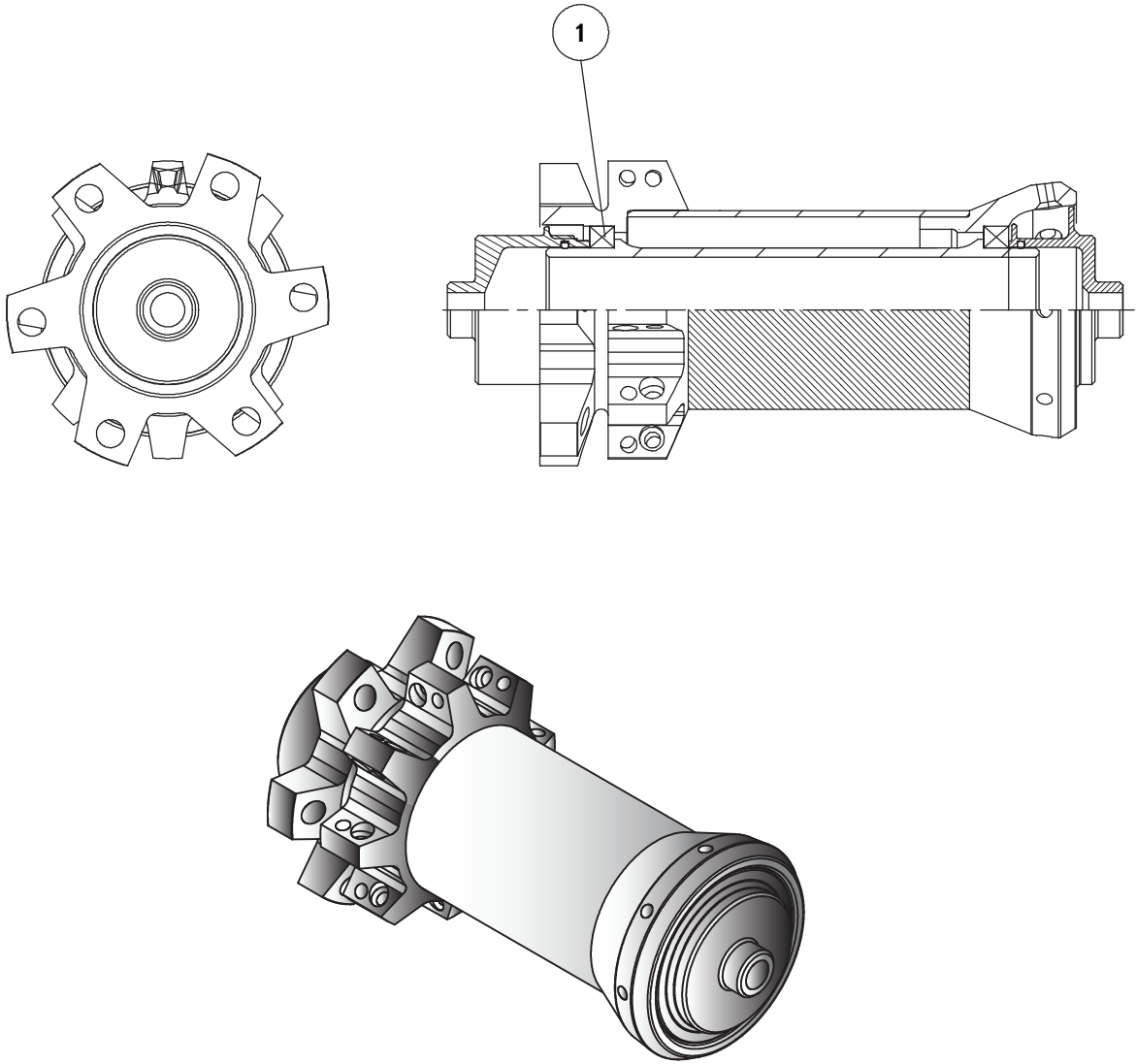


**LFM07 END CAPS, 24MM QR**  
P/N: S125900005

LFM11 FRONT HUB

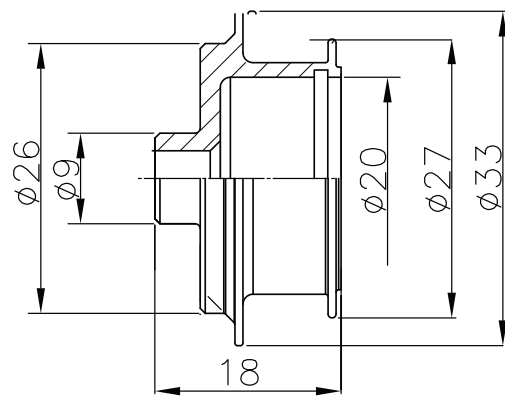
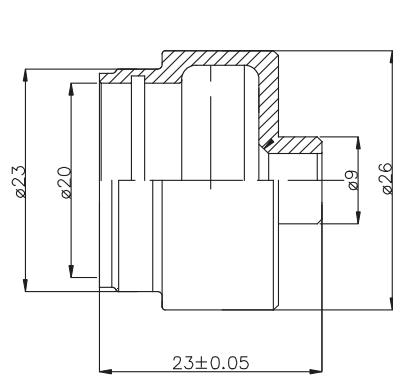
FOUND ON:

- Control SL 26
- Control SL 29
- Control Trail SL 26

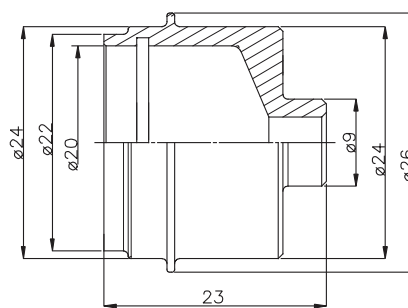
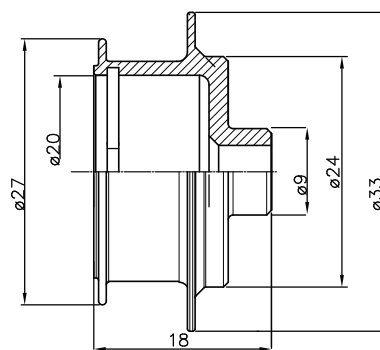


#	P/N	BEARING #	DESCRIPTION
1	S2025007	6704	cartridge bearing to fit LFM11 front hubs (left/right side) 2 per hub, 20x27x4

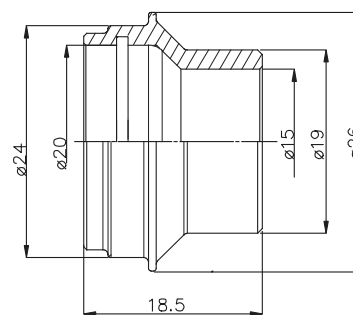
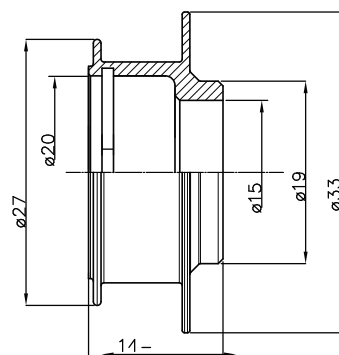
# LFM11 END CAPS



**28MM**  
P/N: S125900007



**24MM**  
P/N: S125900009



**15MM THRU-AXLE**  
P/N: S125900010



# SPOKE LOOKUP

YEAR	MODEL	OPTIONS	FRONT SPOKE RIGHT	FRONT SPOKE LEFT	REAR SPOKE DRIVE SIDE	REAR SPOKE NON DRIVE
2011	Control AL	NA	DT Supercomp 15G, 257mm	DT Supercomp 15G, 268mm	DT Supercomp 15G, 275mm	DT Supercomp 15G, 275mm
	Control EL	NA	DT Revolution 14G, 258mm	DT Revolution 14G, 271mm	DT Revolution 14G, 277mm	DT Revolution 14G, 279mm
	Control SL	135mm/142+	DT Revolution 14G/Aerolite 14g, 258mm	DT Revolution 14G/Aerolite 14g, 268mm	DT Revolution 14G/Aerolite 14g, 275mm	DT Revolution 14G/Aerolite 14g, 277mm
	Control 29 EL	NA	DT Supercomp 15G, 284mm	DT Supercomp 15G, 302mm	DT Supercomp 15G, 302mm	DT Supercomp 15G, 304mm
	Control 29 SL	135/142+	DT Revolution 14G/Aerolite 14g, 289mm	DT Revolution 14G/Aerolite 14g, 299mm	DT Revolution 14G/Aerolite 14g, 300mm	DT Revolution 14G/Aerolite 14g, 302mm
	Control Trail AL	NA	DT Supercomp 15g, 256mm	DT Supercomp 15g, 266mm	DT Supercomp 15g, 273mm	DT Supercomp 15g, 274mm
	Control Trail EL	NA	DT Revolution 14G, 256mm	DT Revolution 14G, 268mm	DT Revolution 14G, 275mm	DT Revolution 14G, 275mm
	Control Trail SL	NA	DT Revolution 14G/Aerolite 14g, 256mm	DT Revolution 14G/Aerolite 14g, 267mm	DT Revolution 14G/Aerolite 14g, 272mm	DT Revolution 14G/Aerolite 14g, 274mm
	Traverse AL	NA	DT Supercomp 15G, 251mm	DT Supercomp 15G, 271mm	DT Supercomp 15G, 268mm	DT Supercomp 15G, 271mm
	Traverse EL	NA	DT Supercomp 15G, 253mm	DT Supercomp 15G, 272mm	DT Supercomp 15G, 271mm	DT Supercomp 15G, 272mm
2012	Control	135mm	DT Revolution 14G, 258mm	DT Revolution 14G, 271mm	DT Revolution 14G, 277mm	DT Revolution 14G, 279mm
	Control	142+ (OE only)	DT Revolution 14G, 261mm	DT Revolution 14G, 271mm	DT Revolution 14G, 277mm	DT Revolution 14G, 279mm
	Control SL	135mm/142+	DT Revolution 14G/Aerolite 14g, 258mm	DT Revolution 14G/Aerolite 14g, 269mm	DT Revolution 14G/Aerolite 14g, 275mm	DT Revolution 14G/Aerolite 14g, 277mm
	Control 29	135mm/142+	DT Supercomp 15G, 290mm	DT Supercomp 15G, 304mm	DT Supercomp 15G, 303mm	DT Supercomp 15G, 305mm
	Control 29 SL	135mm/142+	DT Revolution 14G/Aerolite 14g, 289mm	DT Revolution 14G/Aerolite 14g, 302mm	DT Revolution 14G/Aerolite 14g, 299mm	DT Revolution 14G/Aerolite 14g, 302mm
	Control Trail	135mm/142+	DT Revolution 14G, 257mm	DT Revolution 14G, 269mm	DT Revolution 14G, 275mm	DT Revolution 14G, 276mm
	Control Trail SL	135mm/142+	DT Revolution 14G/Aerolite 14g, 256mm	DT Revolution 14G/Aerolite 14g, 267mm	DT Revolution 14G/Aerolite 14g, 272mm	DT Revolution 14G/Aerolite 14g, 274mm
	Control Trail 29	135mm/142+	DT Supercomp 15G, 285mm	DT Supercomp 15G, 302mm	DT Supercomp 15G, 302mm	DT Supercomp 15G, 304mm
	Control Trail 29 SL	135mm/142+	DT Supercomp 15G, 283mm	DT Supercomp 15G, 301mm	DT Supercomp 15G, 299mm	DT Supercomp 15G, 302mm
	Traverse	135mm/142+	DT Supercomp 15G, 254mm	DT Supercomp 15G, 274mm	DT Supercomp 15G, 272mm	DT Supercomp 15G, 274mm
2013	Traverse 29	135mm/142+	DT Supercomp 15G, 285mm	DT Supercomp 15G, 303mm	DT Supercomp 15G, 303mm	DT Supercomp 15G, 305mm
	Control SL	135mm	DT Revolution 14G/Aerolite 14g, 258mm	DT Revolution 14G/Aerolite 14g, 269mm	DT Revolution 14G/Aerolite 14g, 275mm	DT Revolution 14G/Aerolite 14g, 277mm
	Control 29	135mm/142+	DT Supercomp 15G, 290mm	DT Supercomp 15G, 304mm	DT Supercomp 15G, 303mm	DT Supercomp 15G, 305mm
	Control 29 Carbon	135mm/142+	DT Revolution 14G, 280mm	DT Revolution 14G, 298mm	DT Revolution 14G, 298mm	DT Revolution 14G, 301mm
	Control 29 SL	135mm/142+	DT Revolution 14G, 289mm	DT Revolution 14G, 302mm	DT Revolution 14G, 299mm	DT Revolution 14G, 302mm
	Control Trail	135mm/142+	DT Revolution 14G, 257mm	DT Revolution 14G, 269mm	DT Revolution 14G, 275mm	DT Revolution 14G, 276mm
	Control Trail SL	135mm/142+	DT Revolution 14G, 256mm	DT Revolution 14G, 267mm	DT Revolution 14G, 272mm	DT Revolution 14G, 274mm
	Control Trail 29	135mm/142+	DT Supercomp 15G, 285mm	DT Supercomp 15G, 302mm	DT Supercomp 15G, 302mm	DT Supercomp 15G, 304mm
	Control Trail 29 SL	135mm/142+	DT Supercomp 15G, 283mm	DT Supercomp 15G, 301mm	DT Supercomp 15G, 299mm	DT Supercomp 15G, 302mm
	Traverse	135mm/142+	DT Supercomp 15G, 254mm	DT Supercomp 15G, 274mm	DT Supercomp 15G, 272mm	DT Supercomp 15G, 274mm
2013	Traverse SL	135mm/142+	DT Supercomp 15G, 252mm	DT Supercomp 15G, 273mm	DT Supercomp 15G, 268mm	DT Supercomp 15G, 272mm
	Traverse 29	135mm/142+	DT Supercomp 15G, 285mm	DT Supercomp 15G, 303mm	DT Supercomp 15G, 303mm	DT Supercomp 15G, 305mm





