

# FORNO

**TRUVATIV**

POWERED BY **SRAM**

(english) spare parts catalog

---

## **SRAM® ORIGINAL PARTS**

### **CAUTION:**

The SRAM Warranty policy does not cover damages caused by the use of non-SRAM parts.

Use only SRAM parts with SRAM components.

Installation of parts and accessories not originally intended could result in less than optimal performance and/or injury.

For in-depth service information on SRAM products, refer to our website at [www.sram.com](http://www.sram.com). Contact your local SRAM distributor or dealer for ordering information.

Information contained in this publication is subject to change at any time without prior notice. Your product's appearance may vary from the diagrams contained in this catalog.



---

## TABLE OF CONTENTS

CRANKS / CHAIN RINGS / GUARDS / BOLTS - MTB 3-PIECE	6
5D	
Blaze™	
S2200 / S1250	
CRANKS / CHAIN RINGS / GUARDS / BOLTS - MTB GXP	7-8
Firex®	
Stylo®	
Noir®	
AKA	
GRAVITY - HOWITZER	9-10
Ruktion®	
S800	
Hussefelt®	
Holzfeller®	
TRANSMISSION - HAMMERSCHMIDT - ALL MOUNTAIN & FREERIDE	11-12
All Mountain	
Freeride	
CRANKS / CHAIN RINGS / AEROGUARDS / BOLTS - ROAD	13-14
Elita®	
Omnium®	
BMX	15
Jr	
XR	
Team	
BOX GUIDE / CHAIN TENSIONER / STEM / POST / PEDAL / TOOLS	16-18
Box Guide	
Chain Tensioner	
Stem	
Seatpost	
Pedals	
Tools	
ROAD CHAINRING COMBINATIONS	19
NOTES	20





Part Number	Description
<b>LEFT CRANK ARMS</b>	
11.6115.052.000	Left Arm 5D SQ 170 Pitch Black
11.6115.054.000	Left Arm 5D SQ 175 Pitch Black
11.6115.178.000	Left Arm Blaze PowerSpline 170 Pitch Black
11.6115.179.000	Left Arm Blaze PowerSpline 175 Pitch Black
11.6100.023.070	Left Arm Blaze ISIS 175 Pitch Black
11.6115.062.000	Left Arm Blaze Howitzer 170 Pitch Black
11.6115.063.000	Left Arm Blaze Howitzer 175 Pitch Black
11.6118.002.000	IC Tab Spacers Kit S2200 Blast Black Qty4
11.6118.002.001	IC Tab Spacers Kit S1250 Blast Black Qty4
<b>CHAINRINGS</b>	
11.6215.064.000	Chain Ring MTB 22T V3 64 Steel Matte Black
11.6215.066.000	Chain Ring MTB 24T V1 64 Steel Matte Black
11.6215.024.000	Chain Ring MTB 26T V1 64 Steel Tech Silver
11.6215.025.000	Chain Ring MTB 28T V1 64 Steel Tech Silver
11.6215.063.000	Chain Ring MTB 32T V7 104 Steel MatteBlack
11.6215.065.000	Chain Ring MTB 36T V2 104 Steel Matte Black
11.6215.023.000	Chain Ring MTB 38T V4 104 Steel Tech Silver
11.6215.016.000	Chain Ring MTB 42T V3 104 Steel Matte Black
11.6215.135.000	Chain Ring MTB 42T V4 104 Alum 3mm Blast Black
11.6215.186.000	Chain Ring MTB 44T V4 104 Alum 3mm Blast Black CNC
11.6215.015.000	Chain Ring MTB 44T V4 104 Steel Matte Black
11.6215.018.000	Chain Ring MTB 48T A V2 104 Steel Matte Black (48-38-28)
11.6215.090.000	Chain Ring MTB 48T B V2 104 Alum 4mm Blast Black (48-36-26)
11.6215.017.000	Chain Ring MTB 48T B V3 104 Steel Matte Black (48-36-26)
11.6215.186.010	Chain Ring MTB CAS 44T V4 104 Alum 3mm Blast Black
11.6215.186.030	Chain Ring MTB CAS 44T V4 104 Steel Matte Black
11.6215.187.000	Chain Ring MTB CAS 48T B V2 104 Alum 4mm Blast Black (48-36-26)
11.6215.112.000	Chain Ring SS 32T 104 Steel Tech Silver
11.6215.077.000	Chain Ring SS/DH 32T 104 Alum 3mm Blast Black
11.6215.118.000	Chain Ring SS 33T 104 Alum 3mm Blast Black
11.6215.061.000	Chain Ring SS 33T 104 Steel Tech Silver
11.6215.113.000	Chain Ring SS 38T 104 Alum 3mm Blast Black
11.6215.133.000	Chain Ring SS 38T 104 Steel MattBlack
11.6215.114.000	Chain Ring SS 42T 104 Alum 3mm Blast Black
11.6215.021.010	Chain Ring SS 42T 104 Steel Black
11.6215.021.000	Chain Ring SS 42T 104 Steel Tech Silver
<b>CHAINRING BOLT/BOLT KITS</b>	
11.6915.017.000	Chain Ring Bolt Kit 4-arm Double w RG Long Steel/Steel Black
11.6915.005.000	Chain Ring Bolt Kit 4-arm Single w Aluminum Guard Steel Black
11.6915.006.000	Chain Ring Bolt Kit 4-arm Single No Guard Steel Black
11.6915.016.000	Chain Ring Bolt Kit 4-arm Triple Steel/Steel Black
<b>CRANK ARM BOLT/BOLTS</b>	
11.6900.002.070	Crank Arm Bolts M15/M22 Alloy Self-Extracting, Qty 2
11.6900.002.050	Crank Arm Bolts M15 Capless Qty 2 for ISIS & Hwtzr M15
11.6115.115.000	Crank Arm Bolts M8 Capless Qty 2 for Square-taper & PowerSpline
<b>PEDAL WASHERS</b>	
11.6700.002.010	Pedal Washers Chromo, Qty 2



## Part Number

## Description

### LEFT CRANK ARMS

11.6115.290.000	Left Arm Firex GXP 170 Blast Black
11.6115.289.000	Left Arm Firex GXP 170 Mirror Black
11.6115.287.000	Left Arm Firex GXP 175 Blast Black
11.6115.286.000	Left Arm Firex GXP 175 Mirror Black
11.6115.492.000	08 L Arm Stylo GXP 170 Mirror Black
11.6115.492.010	08 L Arm Stylo GXP 175 Mirror Black
11.6115.492.020	08 L Arm Stylo GXP 180 Mirror Black
11.6115.492.060	Left Arm Stylo Oct GXP 170 Mirror Black
11.6115.492.080	Left Arm Stylo Oct GXP 175 Mirror Black
11.6115.492.100	Left Arm Stylo Oct GXP 180 Mirror Black
11.6115.413.000	Left Arm Noir XC GXP 170 Carbon
11.6115.414.000	Left Arm Noir XC GXP 175 Carbon
11.6115.529.010	Left Arm Noir XC GXP 175 Red
11.6115.536.000	Left Arm AKA GXP 170 Brushed Black
11.6115.536.010	Left Arm AKA GXP 175 Brushed Black
11.6115.536.020	Left Arm AKA GXP 180 Brushed Black

### CHAINRINGS

11.6215.089.000	Chain Ring MTB 22T V3 64 Alum Hard Black
11.6215.064.000	Chain Ring MTB 22T V3 64 Steel Matte Black
11.6215.128.000	Chain Ring MTB 22T V3 64 Alum Tungsten Grey
11.6215.188.110	Chain Ring MTB 22T V3 64 Alum3 Orange
11.6215.188.100	Chain Ring MTB 22T V3 64 Alum3 Red
11.6215.093.000	Chain Ring MTB 24T B V1 64 Alum 3mm Blast Black 9 & 10 speed
11.6215.066.000	Chain Ring MTB 24T V1 64 Steel Matte Black
11.6215.092.000	Chain Ring MTB 26T V1 64 Alum 3mm Blast Black
11.6215.024.000	Chain Ring MTB 26T V1 64 Steel Tech Silver
11.6215.088.000	Chain Ring MTB 32T V7 104 Alum Hard Black
11.6215.129.000	Chain Ring MTB 32T V7 104 Alum Tungsten Grey
11.6215.063.000	Chain Ring MTB 32T V7 104 Steel MatteBlack
11.6215.091.000	Chain Ring MTB 36T 104 Alum 3mm Blast Black
11.6215.132.000	Chain Ring MTB 36T 104 Alum 3mm Tungsten Grey
11.6215.065.000	Chain Ring MTB 36T V2 104 Steel Matte Black
11.6215.186.000	Chain Ring MTB 44T V4 104 Alum 3mm Blast Black CNC
11.6215.188.060	Chain Ring MTB 44T V4G2 104 Alum4 3mm TPR Gold
11.6215.188.050	Chain Ring MTB 44T V4G2 104 Alum4 3mm TPR Red
11.6215.188.040	Chain Ring MTB 44T V4G2 104 Alum4 3mm TPR TGGrey
11.6215.087.000	Chain Ring MTB 44T V4 104 Alum 4mm Hard Black
11.6215.188.020	Chain Ring MTB 44T V4 104 Alum 4mm Tungsten Grey 4mm Stylo interface
11.6215.015.000	Chain Ring MTB 44T V4 104 Steel Matte Black
11.6215.090.000	Chain Ring MTB 48T B V2 104 Alum 4mm Blast Black (48-36-26)
11.6215.139.000	Chain Ring MTB 48T B V2 104 Alum 4mm Tungsten Grey (48-36-26)
11.6215.186.010	Chain Ring MTB CAS 44T V4 104 Alum 3mm Blast Black
11.6215.186.020	Chain Ring MTB CAS 44T V4 Alum 4mm Matte Black
11.6215.187.000	Chain Ring MTB CAS 48T B V2 104 Alum 4mm Blast Black (48-36-26)
11.6215.077.000	Chain Ring SS/DH 32T 104 Alum 3mm Blast Black
11.6215.118.000	Chain Ring SS 33T 104 Alum 3mm Blast Black
11.6215.113.000	Chain Ring SS 38T 104 Alum 3mm Blast Black
11.6215.114.000	Chain Ring SS 42T 104 Alum 3mm Blast Black



Part Number	Description
<b>CHAINRING GUARDS</b>	
11.6315.007.000	Aero Guard 42-44T Black
11.6315.003.000	Aero Guard 48T 45Degree Black
11.6315.017.000	Chainring Guard Trials 22T 104BCD 6.25mm AL Blast Black
11.6315.015.000	Chainring Guard BashGuard 34-36T 104BCD 12mm Polycarb Smoke
11.6315.016.000	Chainring Guard BashGuard 38-40T 104BCD 12mm Polycarb Smoke
11.6315.027.000	Chainring Guard All Mountain Stylo 32/33T 104BCD 4mm AL Mirror Black
11.6315.027.010	Chainring Guard All Mountain Stylo 36/38T 104BCD 4mm AL Mirror Black
11.6315.027.020	Chainring Guard All Mountain Stylo 42T 104BCD 4mm AL Mirror Black
11.6315.027.030	Chainring Guard All Mountain Noir 32/33T 104BCD 4mm Carbon Fiber
11.6315.029.000	Chainring Guard RockGuard 32T 104BCD 10mm Polycarb Black w Stripe
11.6315.029.010	Chainring Guard RockGuard 36T 104BCD 10mm Polycarb Black w Stripe
11.6315.029.020	Chainring Guard RockGuard 32T 104BCD 10mm Polycarb White w Stripe
11.6315.029.030	Chainring Guard RockGuard 36T 104BCD 10mm Polycarb White w Stripe
11.6315.029.040	Chainring Guard RockGuard 32T 104BCD 10mm Polycarb White w Delft
11.6315.029.050	Chainring Guard RockGuard 36T 104BCD 10mm Polycarb White w Delft
<b>CHAINRING BOLTBOLT KITS</b>	
11.6915.017.000	Chain Ring Bolt Kit 4-arm Double w RG Long Steel/Steel Black
11.6915.005.000	Chain Ring Bolt Kit 4-arm Single w Aluminum Guard Steel Black
11.6915.006.000	Chain Ring Bolt Kit 4-arm Single No Guard Steel Black
11.6915.004.000	Chain Ring Bolt Kit 4-arm Triple Aluminum/Stainless Black
11.6915.016.000	Chain Ring Bolt Kit 4-arm Triple Steel/Steel Black
11.6215.193.050	Chain Ring Bolt Kit 4X1 W Guard Alum Black
11.6215.193.010	Chain Ring Bolt Kit 4X3 Alumum/SS Gold
11.6215.193.000	Chain Ring Bolt Kit 4X3 Alumum/SS Red
<b>CRANK ARM BOLTBOLTS</b>	
11.6915.027.000	Crank Arm Bolt M15/M22 Alloy Self-Extracting GXP Qty 1
11.6900.002.140	Crank Arm Bolt M15/M26 Alloy Self-Extracting GXP Silver Qty 1
11.6900.002.160	Crank Arm Bolt M15/M26 Alloy Self-Extracting GXP Black Qty 1
11.6115.530.010	Crank Arm Bolt Self-Extr M15/M26 GXP Glod
11.6115.530.000	Crank Arm Bolt Self-Extr M15/M26 GXP Red
11.6115.530.060	Crank Arm Bolt M18/M30 Alloy Self-Extracting BB30 Right (S-series & MTB) Qty 1
<b>PEDAL WASHERS</b>	
11.6700.002.010	Pedal Washers Chromo, Qty 2





## Part Number

## Description

**CRANK ARMS**

11.6115.181.000	Left Arm Ruktion HW 170 Pitch Black
11.6115.182.000	Left Arm Ruktion HW 175 Pitch Black
11.6115.189.000	R/L Arm Ruktion 1/G HW 170 Pitch Black
11.6115.190.000	R/L Arm Ruktion 1/G HW 175 Pitch Black
11.6115.185.000	R/L Arm Ruktion 2/3 HW 170 Pitch Black
11.6115.186.000	R/L Arm Ruktion 2/3 HW 175 Pitch Black
11.6115.540.000	Left Arm S800 Howitzer 175 Pitch Black
11.6115.193.000	Left Arm Hussefelt HW 165 Blast Black
11.6115.194.000	Left Arm Hussefelt HW 170 Blast Black
11.6115.195.000	Left Arm Hussefelt HW 175 Blast Black
11.6115.203.000	R/L Arm Hussefelt 1 HW 165 Blast Black
11.6115.204.000	R/L Arm Hussefelt 1 HW 170 Blast Black
11.6115.205.000	R/L Arm Hussefelt 1 HW 175 Blast Black
11.6115.209.000	Left Arm Holzfeller HW 170 Mirror Black
11.6115.210.000	Left Arm Holzfeller HW 175 Mirror Black
11.6115.484.020	Left Arm Holzfeller OCT HW 165 Blast Black
11.6115.484.000	Left Arm Holzfeller OCT HW 170 Blast Black
11.6115.484.010	Left Arm Holzfeller OCT HW 175 Blast Black
11.6115.485.000	R/L Arm Holz OCT Double HW 170 Blast Black
11.6115.485.010	R/L Arm Holz OCT Double HW 175 Blast Black
11.6115.485.040	R/L Arm Holz OCT SS, 1/G HW 165 Blast Black
11.6115.485.020	R/L Arm Holz OCT SS, 1/G HW 170 Blast Black
11.6115.485.030	R/L Arm Holz OCT SS, 1/G HW 175 Blast Black

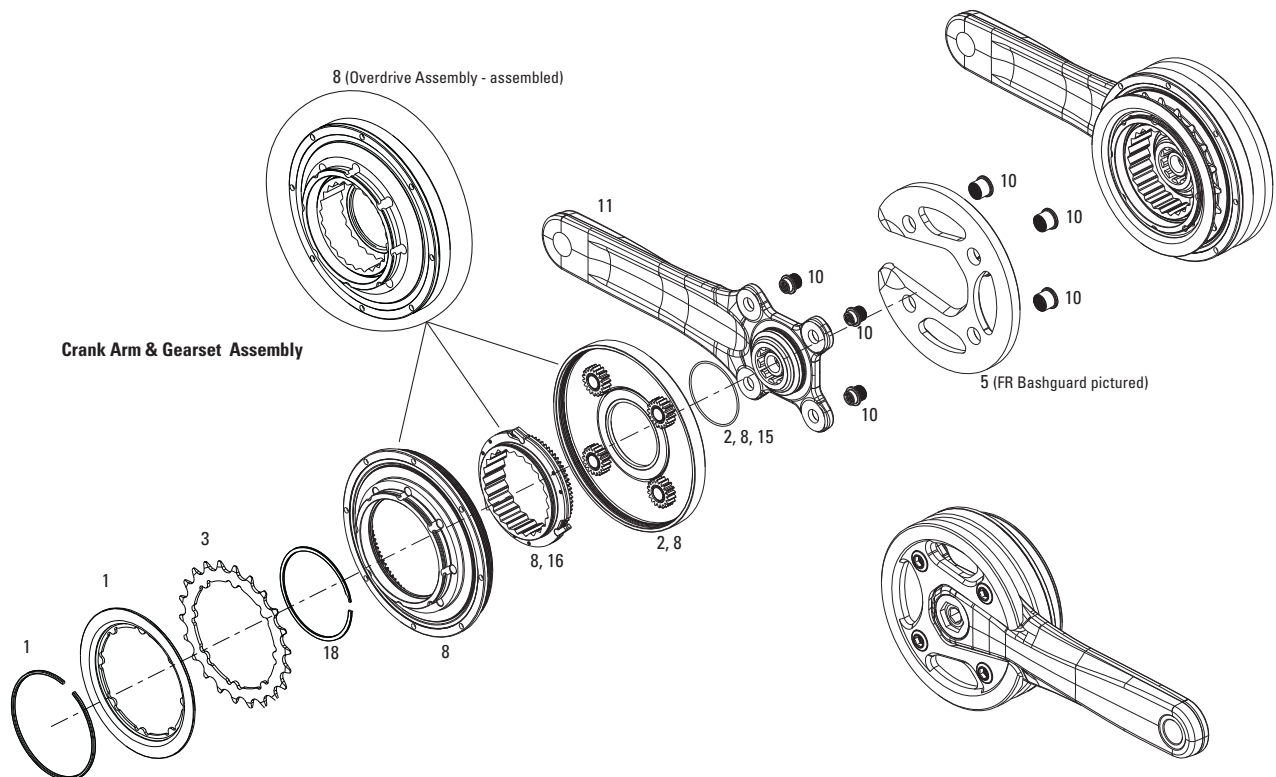
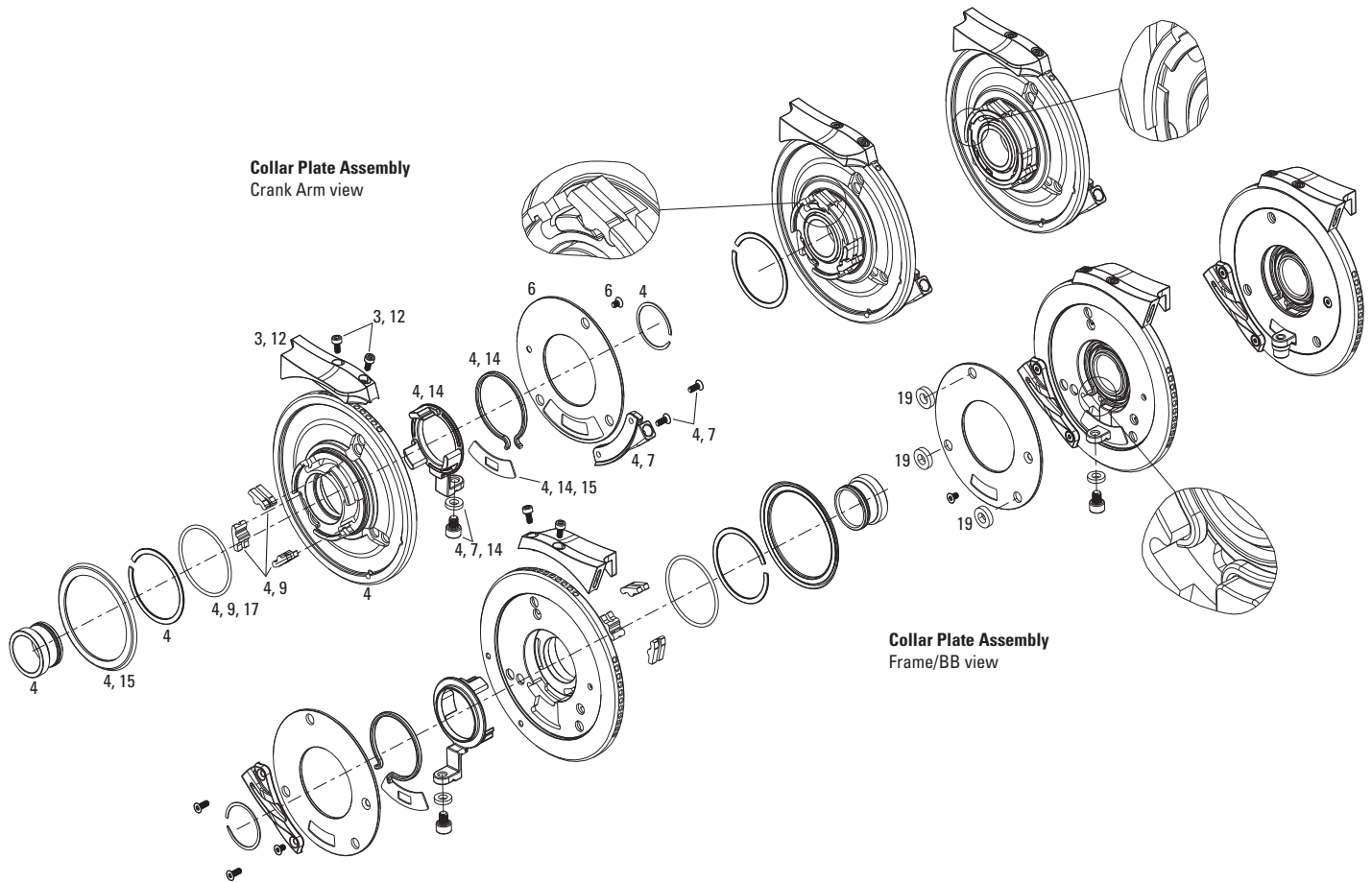
**CHAINRINGS**

11.6215.064.000	Chain Ring MTB 22T V3 64 Steel Matte Black
11.6215.089.000	Chain Ring MTB 22T V3 64 Alum Hard Black
11.6215.093.000	Chain Ring MTB 24T B V1 64 Alum 3mm Blast Black 9 & 10 speed
11.6215.066.000	Chain Ring MTB 24T V1 64 Steel Matte Black
11.6215.088.000	Chain Ring MTB 32T V7 104 Alum Hard Black
11.6215.129.000	Chain Ring MTB 32T V7 104 Alum Tungsten Grey
11.6215.063.000	Chain Ring MTB 32T V7 104 Steel MatteBlack
11.6215.091.000	Chain Ring MTB 36T 104 Alum 3mm Blast Black
11.6215.132.000	Chain Ring MTB 36T 104 Alum 3mm Tungsten Grey
11.6215.065.000	Chain Ring MTB 36T V2 104 Steel Matte Black
11.6215.186.000	Chain Ring MTB 44T V4 104 Alum 3mm Blast Black CNC
11.6215.087.000	Chain Ring MTB 44T V4 104 Alum 4mm Hard Black
11.6215.015.000	Chain Ring MTB 44T V4 104 Steel Matte Black
11.6215.112.000	Chain Ring SS 32T 104 Steel Tech Silver
11.6215.097.000	Chain Ring SS 34T 104 Steel Matte Black
11.6215.098.000	Chain Ring SS 36T 104 Steel Matte Black
11.6215.133.000	Chain Ring SS 38T 104 Steel MattBlack
11.6215.021.000	Chain Ring SS 42T 104 Steel Tech Silver
11.6215.077.000	Chain Ring SS/DH 32T 104 Alum 3mm Blast Black
11.6215.076.000	Chain Ring SS/DH 34T 104 Alum 4mm Blast Black
11.6215.075.000	Chain Ring SS/DH 36T 104 Alum 4mm Blast Black
11.6215.074.000	Chain Ring SS/DH 38T 104 Alum 4mm Blast Black
11.6215.073.000	Chain Ring SS/DH 40T 104 Alum 4mm Blast Black
11.6215.072.000	Chain Ring SS/DH 42T 104 Alum 4mm Blast Black

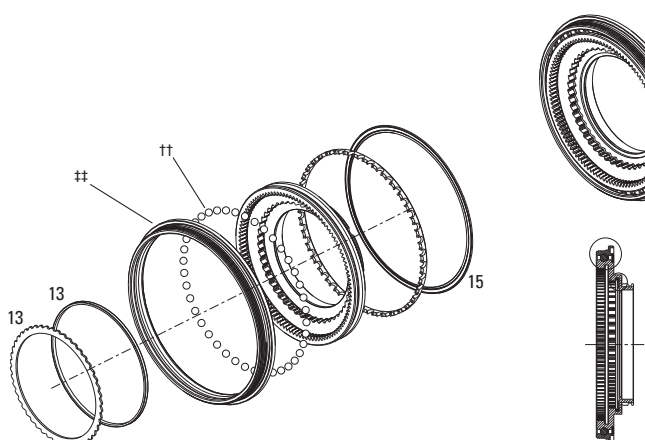


Part Number	Description
<b>CHAINRING GUARDS</b>	
11.6315.017.000	Chainring Guard Trials 22T 104BCD 6.25mm AL Blast Black
11.6315.015.000	Chainring Guard BashGuard 34-36T 104BCD 12mm Polycarb Smoke
11.6315.016.000	Chainring Guard BashGuard 38-40T 104BCD 12mm Polycarb Smoke
11.6315.027.000	Chainring Guard All Mountain Stylo 32/33T 104BCD 4mm AL Mirror Black
11.6315.027.010	Chainring Guard All Mountain Stylo 36/38T 104BCD 4mm AL Mirror Black
11.6315.027.020	Chainring Guard All Mountain Stylo 42T 104BCD 4mm AL Mirror Black
11.6315.027.030	Chainring Guard All Mountain Noir 32/33T 104BCD 4mm Carbon Fiber
11.6315.029.000	Chainring Guard RockGuard 32T 104BCD 10mm Polycarb Black w Stripe
11.6315.029.010	Chainring Guard RockGuard 36T 104BCD 10mm Polycarb Black w Stripe
11.6315.029.020	Chainring Guard RockGuard 32T 104BCD 10mm Polycarb White w Stripe
11.6315.029.030	Chainring Guard RockGuard 36T 104BCD 10mm Polycarb White w Stripe
11.6315.029.040	Chainring Guard RockGuard 32T 104BCD 10mm Polycarb White w Delft
11.6315.029.050	Chainring Guard RockGuard 36T 104BCD 10mm Polycarb White w Delft
<b>CHAINRING BOLT/BOLT KITS</b>	
11.6915.017.000	Chain Ring Bolt Kit 4-arm Double w RG Long Steel/Steel Black
11.6915.005.000	Chain Ring Bolt Kit 4-arm Single w Aluminum Guard Steel Black
11.6915.006.000	Chain Ring Bolt Kit 4-arm Single No Guard Steel Black
11.6915.007.000	Chain Ring Bolt Kit 4-arm Single w BG Long Steel Black
11.6915.016.000	Chain Ring Bolt Kit 4-arm Triple Steel/Steel Black
<b>CRANK ARM BOLT/BOLTS</b>	
11.6900.002.020	Crank Arm Bolts M12 Capless Qty 2 for Howitzer
11.6900.002.040	Crank Arm Bolts M12/M22 CrMo Self-Extracting Qty 2 for Howitzer
11.6900.002.050	Crank Arm Bolts M15 Capless Qty 2 for ISIS & Hwtzr M15
<b>PEDAL WASHERS</b>	
11.6700.002.010	Pedal Washers Chromo, Qty 2

# TRANSMISSION - HAMMERSCHMIDT - ALL MOUNTAIN & FREERIDE

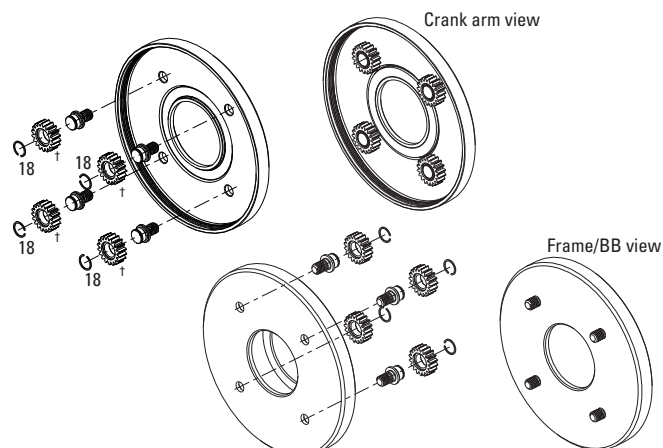


# TRANSMISSION - HAMMERSCHMIDT - ALL MOUNTAIN & FREERIDE



**Crankarm Gearset Bearing Assembly**

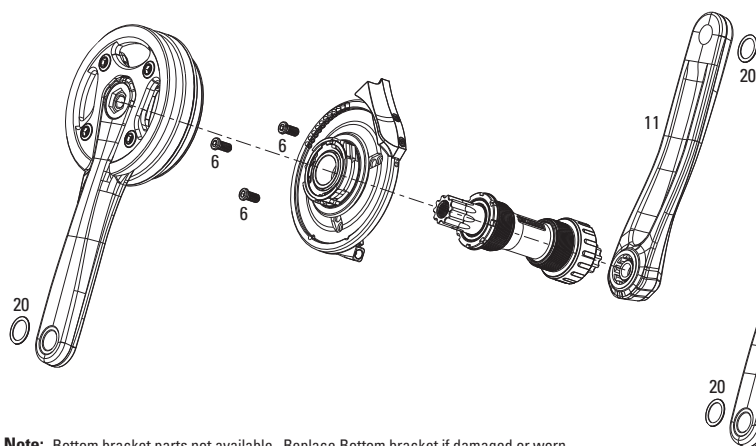
**Note:** Bearings do not need to be serviced or replaced. Do not remove bearings (††) from outer race (††).



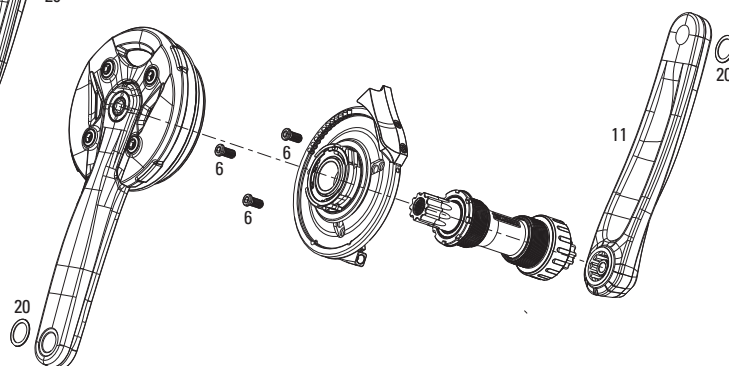
**Crankarm Gearset Carrier Assembly**

**Note:** If planet gears (†) are damaged, must replace complete carrier assembly (11-6115-508-000) or complete Overdrive assembly (11-6115-524-000). Individual planet gears are not available separately.

**HammerSchmidt All Mountain**



**HammerSchmidt Freeride**



**Note:** Bottom bracket parts not available. Replace Bottom bracket if damaged or worn.

No.	Part Number	Description
1	11.6115.511.000	HammerSchmidt Chainring Retainer & Guide
2	11.6115.508.000	HammerSchmidt Carrier Assembly 2-speed Crank AM
3	11.6115.510.000	HammerSchmidt Chain Ring / Guide 22T Kit
3	11.6115.510.010	HammerSchmidt Chain Ring / Guide 24T Kit
4	11.6115.522.000	HammerSchmidt Collar Plate Assembly without ISCG Disc
5	11.6115.512.000	HammerSchmidt Bashguard AM Carbon
5	11.6115.512.010	HammerSchmidt Bashguard FR PC
6	11.6115.521.000	HammerSchmidt Collar Bolts & ISCG Plate 03
6	11.6115.521.010	HammerSchmidt Collar Bolts & ISCG Plate 05
7	11.6115.515.000	HammerSchmidt Cable Stop Assembly
8	11.6115.524.000	HammerSchmidt Overdrive Assembly
9	11.6115.518.000	HammerSchmidt Overdrive Pawl & Spring Assembly
10	11.6115.514.000	HammerSchmidt Planet Nuts AM Tungsten Grey
10	11.6115.514.010	HammerSchmidt Planet Nuts FR Black
11	11.6115.513.000	HammerSchmidt Crank Arms AM 170 Tungsten Grey L&R
11	11.6115.513.010	HammerSchmidt Crank Arms AM 175 Tungsten Grey L&R
11	11.6115.513.020	HammerSchmidt Crank Arms FR 165 Galvanized L&R
11	11.6115.513.030	HammerSchmidt Crank Arms FR 170 Galvanized L&R
11	11.6115.513.040	HammerSchmidt Crank Arms FR 175 Galvanized L&R
12	11.6115.516.000	HammerSchmidt Chain Guide 22T
12	11.6115.516.010	HammerSchmidt Chain Guide 24T
13	11.6115.509.000	HammerSchmidt Damper Assembly
14	11.6115.520.000	HammerSchmidt Actuator Assembly
15	11.6115.519.000	HammerSchmidt Seal Assembly
16	11.6115.507.000	HammerSchmidt Sun Assembly 2-speed Crank
17	11.6115.517.000	HammerSchmidt Overdrive Pawl Spring only
18	11.6115.523.000	HammerSchmidt Gear Retaining Rings
19	11.6315.030.000	HammerSchmidt ISCG Spacer 3each (0.5/1.0/1.5/2.0/2.5/3.0mm)
20	11.6700.002.010	Pedal Washers Chromo, Qty 2

**NOTE:** For a list of HammerSchmidt tools, see page 19



Part Number	Description
<b>LEFT CRANK ARMS</b>	
11.6115.498.010	08 L Arm Elita GXP 170 Mirror Black
11.6115.498.020	08 L Arm Elita GXP 172.5 Mirror Black
11.6115.498.030	08 L Arm Elita GXP 175 Mirror Black
11.6115.502.010	Left Arm Omnium GXP 165 Mirror Black
11.6115.502.000	Left Arm Omnium GXP 165 Super Aluminum
11.6115.502.110	Left Arm Omnium GXP 167.5 Mirror Black
11.6115.502.100	Left Arm Omnium GXP 167.5 Super Aluminum
11.6115.502.030	Left Arm Omnium GXP 170 Mirror Black
11.6115.502.020	Left Arm Omnium GXP 170 Super Aluminum

## CHAIN RINGS / AEROGUARDS / BOLTS - ROAD

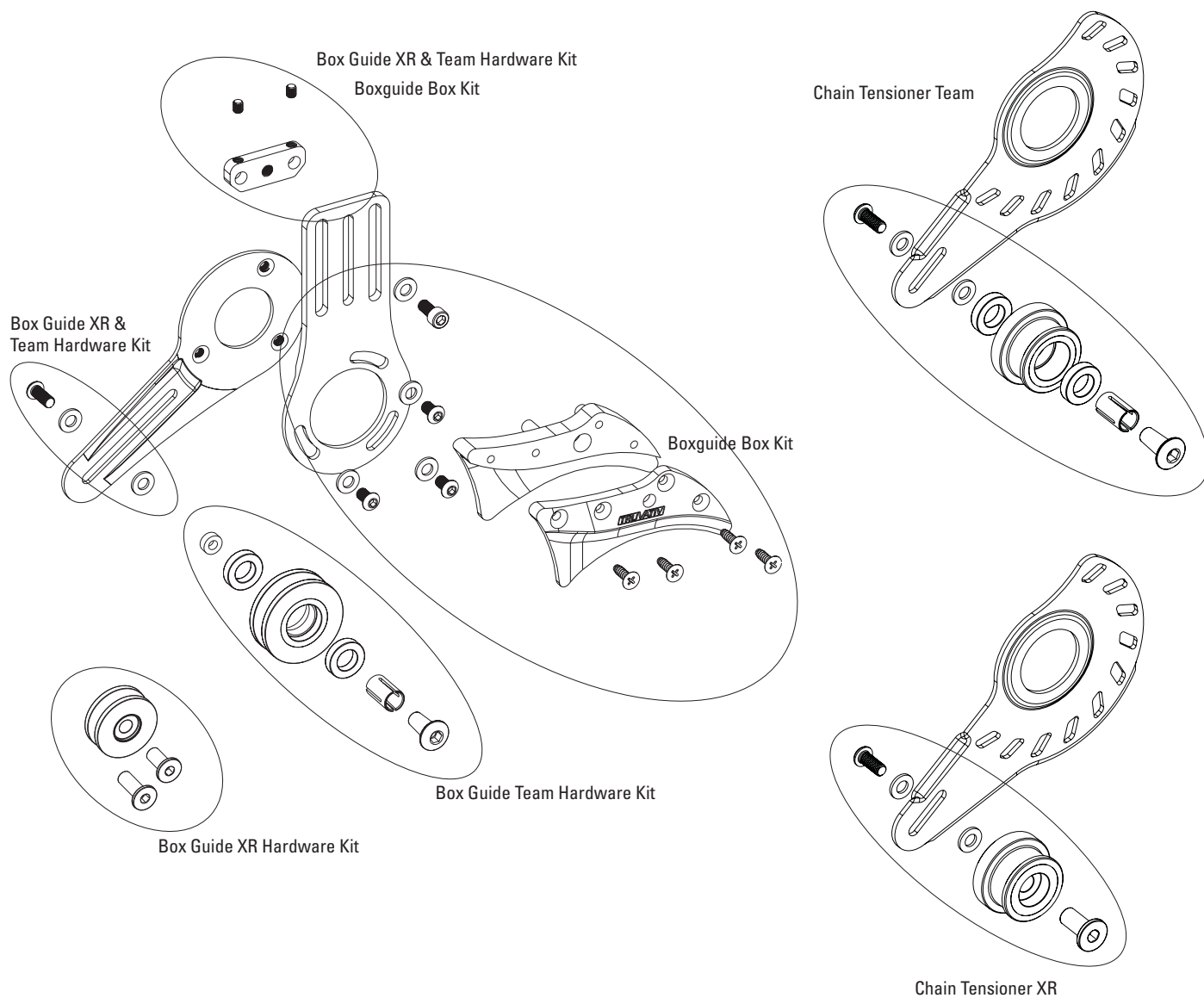


Part Number	Description
<b>CHAINRINGS</b>	
11.6215.125.000	Chain Ring Road 30T Triple V4 74 Steel Matte Black
11.6215.182.000	Chain Ring Road 34T Double V1 110 Steel Matte Black
11.6215.183.000	Chain Ring Road 36T Double V1 110 Steel Matte Black
11.6215.071.000	Chain Ring Road 39T V1 130 Steel Tech Silver
11.6215.153.000	Chain Ring Road 42T Triple V3 130 Steel Matte Black (52-42-30)
11.6215.036.000	Chain Ring Road 50T A V3 110 Steel Matte Black (50-36)
11.6215.100.000	Chain Ring SS/Road 52T 130 Alum 3mm Blast Black
11.6215.104.000	Chain Ring Road 52T Triple V2 130 Steel Matte Black (52-42-30)
11.6215.145.000	Chain Ring SS/Road 53T 130 Alum 3mm Blast Black
11.6215.029.000	Chain Ring Road 53T V2 130 Steel Matte Black
11.6215.155.000	Chain Ring Road 42T Triple V3 130 Alum 3mm Tungsten Grey (52-42-30)
11.6215.172.000	Chain Ring SS/Road 44T 130 Alum 3mm Blast Black
11.6215.173.000	Chain Ring SS/Road 48T 130 AL3 Tungsten Grey
<b>CHAINRING GUARDS</b>	
11.6215.143.000	Chainring Guard Road/Cross 42T 130BCD 4mm AL Blast Black
11.6315.018.000	Chainring Guard Road/Cross 52T 130BCD 3mm AL Blast Black
<b>CHAINRING BOLT/BOLT KITS</b>	
11.6915.009.000	Chain Ring Bolt Kit 5-arm Double Aluminum Black
11.6915.008.000	Chain Ring Bolt Kit 5-arm Double Aluminum Silver
11.6915.018.000	Chain Ring Bolt Kit 5-arm Triple Aluminum/Steel Silver
11.6915.012.000	Chain Ring Bolt Kit 5-arm Double Steel Black
11.6915.015.000	Chain Ring Bolt Kit 5-arm Single Steel w Spacer Black
11.6915.011.000	Chain Ring Bolt Kit 5-arm Triple Steel/Steel Black
<b>CRANK ARM BOLTBOLTS</b>	
11.6915.027.000	Crank Arm Bolt M15/M22 Alloy Self-Extracting GXP Qty 1
11.6900.002.140	Crank Arm Bolt M15/M26 Alloy Self-Extracting GXP Silver Qty 1
11.6900.002.160	Crank Arm Bolt M15/M26 Alloy Self-Extracting GXP Black Qty 1
11.6900.002.050	Crank Arm Bolts M15 Capless Qty 2 for ISIS & Hwtr M15
11.6115.115.000	Crank Arm Bolts M8 Capless Qty 2 for Square-taper & PowerSpline
<b>PEDAL WASHERS</b>	
11.6700.002.010	Pedal Washers Chromo, Qty 2
<b>AEROGUARD</b>	
11.6215.195.000	Aero Guard Via 48T Clear Smoke
11.6315.005.000	Aero Guard 48T 68Degree Black

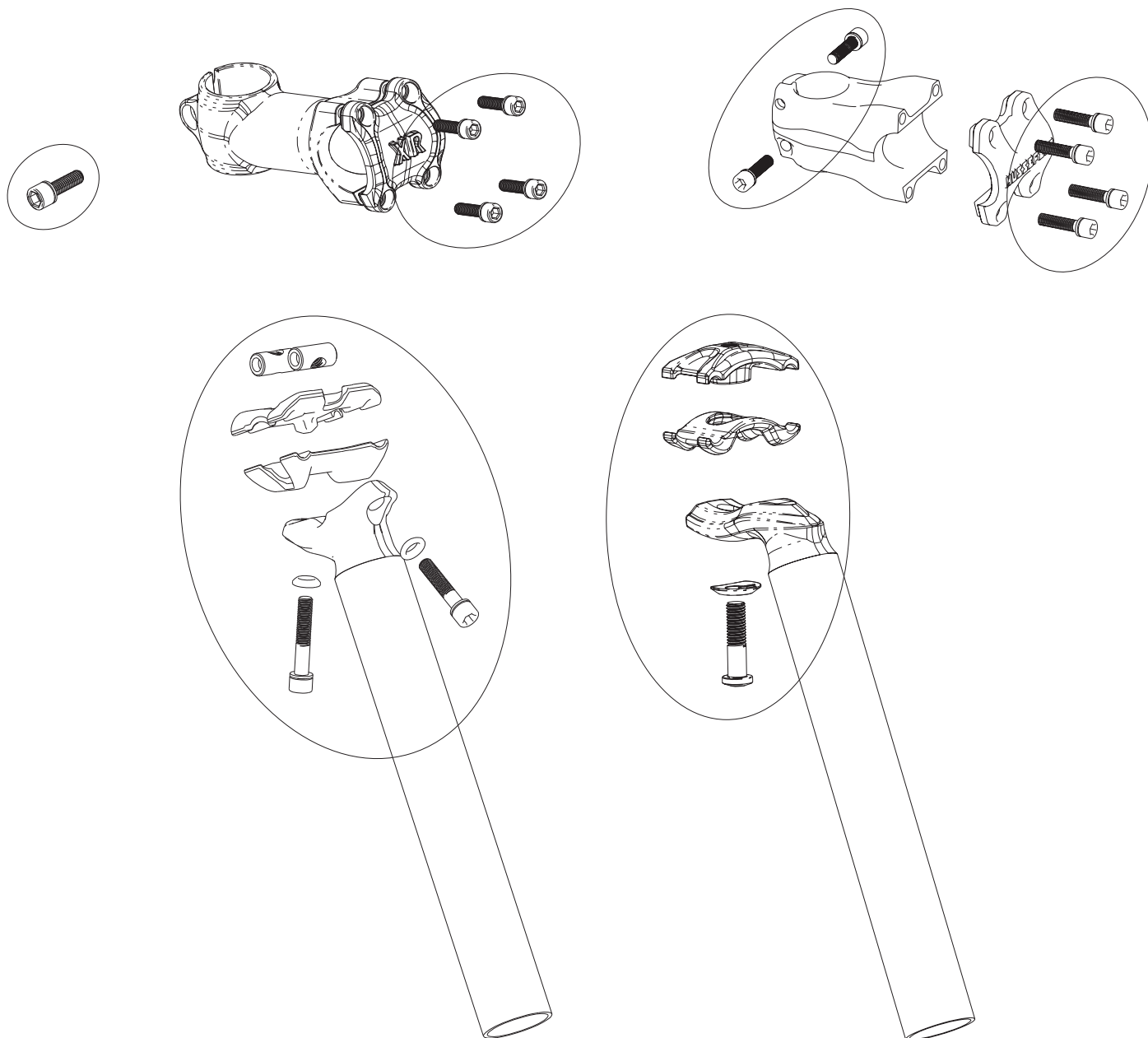


Part Number	Description
<b>CHAINRING BOLT/BOLT KITS</b>	
11.6915.012.000	Chain Ring Bolt Kit 5-arm Double Steel Black
<b>CRANK ARM BOLT/BOLTS</b>	
11.6900.002.070	Crank Arm Bolts M15/M22 Alloy Self-Extracting, Qty 2
11.6900.002.050	Crank Arm Bolts M15 Capless Qty 2 for ISIS & Hwtzr M15
11.6115.115.000	Crank Arm Bolts M8 Capless Qty 2 for Square-taper & PowerSpline
<b>PEDAL WASHERS</b>	
11.6700.002.010	Pedal Washers Chromo, Qty 2
<b>CRANK ARM BOLT/BOLTS</b>	
11.6900.002.050	Crank Arm Bolts M15 Capless Qty 2 for ISIS & Hwtzr M15
11.6900.002.070	Crank Arm Bolts M15/M22 Alloy Self-Extracting, Qty 2

## BOX GUIDE / CHAIN TENSIONER







## BOX GUIDE / CHAIN TENSIONER / STEM / POST / PEDAL / TOOLS

Part Number	Description
<b>BOX GUIDE</b>	
11.6300.009.010	Boxguide Box
11.6315.028.000	Box Guide Team Hardware Kit
<b>CHAIN TENSIONER</b>	
11.6915.001.000	Hardware Kit, Chain Tensioner Team
<b>STEM</b>	
11.6900.007.010	Stem Bolt Kit Hussefelt/Holzfeller
<b>POST</b>	
11.6815.001.000	Post Single Clamp Kit
11.6815.003.000	Post Double Clamp Kit
<b>PEDAL</b>	
11.6700.002.010	Pedal Washers Chromo, Qty 2
11.6700.003.010	Pedal Pins Holzfeller Qty 32
<b>TOOLS</b>	
11.6400.005.000	BB ISIS Drive Tool
11.6400.006.000	GXP/Howitzer Tool
11.6115.525.000	HammerSchmidt Gauge Tool Assembly
11.6115.526.000	HammerSchmidt Facing Tool Assembly
11.6115.527.000	HammerSchmidt Bearing Removal/Overdrive Disassembly Tool
11.6115.528.000	HammerSchmidt Grease 25ml
00.6415.032.010	Tool BB30 to BSA Adapter Removal Kit
00.6415.032.020	BB30 Bearing Install Kit
00.6415.032.030	BB30 Bearing Removal Tool

# ROAD CHAINRING COMBINATIONS

Combination	Rings	Material	Marking	8-speed	9-speed	10-speed	SRAM Only
39-53	39	Steel	39-53	X	X		
	53	Steel	53-V2				
39-53 *	39	Steel	39-53		X		
	53	AL-7075-4mm	53-V4 (w/ date code)				
39-53	39	AL-7075-3mm	39-53-V2			X	
	53	AL-7075-4mm	53-V4 (w/ date code)				
39-53	39	AL-7075-3mm	39-53-V2			X	X
	53	AL-7075-4mm	53T-S1 use with 39T only, SRAM chain only (w/ date code)				
39-53	39	AL-7075-3mm	39-53-V2			X	X
	53-TT	AL-7075-4mm	53T-S1 use with 39T only, SRAM chain only (w/ date code)				
42-54	42	AL-7075-3mm	42T-v4-130			X	X
	54-TT	AL-7075-4mm	54T-S1 use w/ 42T only, SRAM chain only (w/ date code)				
42-55	42	AL-7075-3mm	42T-v4-130			X	X
	54-TT	AL-7075-4mm	55T-S1 use w/ 42T only, SRAM chain only (w/ date code)				
39-48	39	Steel	39-53		X		
	48	AL-7075-3mm	48-V1				
39-48	39	Steel	39-53		X	X	
	48	AL-7075-4mm	48-39				
34-48	34-110BCD	AL-7075-3mm	34-110 V1, 10 Speed only		X		
	48-110BCD	AL-7075-3mm	48T V1 use w/ 34T only (w/date code)				
34-48	34-110BCD	AL-7075-3mm	34-110 V1, 10 speed only			X	
	48-110BCD	AL-7075-4mm	48T V2 USE W/34T ONLY (w/date code)				
36-50	36-110BCD	Steel	36-V1-110	X			
	50-110BCD	Steel	50T-V3-110, 36T only				
36-50	36-110BCD	Steel	36-V1-110		X		
	50-110BCD	AL-7075-4mm	50T-A-V4 (for 36-50) (w/ date code)				
36-50	36-110BCD	AL-7075-3mm	36-110-V3, 10 speed only			X	
	50-110BCD	AL-7075-4mm	50T-A-V4 (for 36-50) (w/ date code)				
34-50	34-110BCD	Steel	34-110-V1		X		
	50-110BCD	AL-7075-4mm	50T-B-V2 (for 34-50) (w/ date code)				
34-50	34-110BCD	AL-7075-3mm	34-110-V1, 10 speed only			X	
	50-110BCD	AL-7075-4mm	50T-B-V2 (for 34-50) (w/ date code)				
34-50	34-110BCD	AL-7075-3mm	34-110-V1, 10 speed only			X	X
	50-110BCD	AL-7075-4mm	50-S1 use w/ 34T only, SRAM chain only (w/ date code)				
36-52	36-110BCD	AL-7075-3mm	36-110-V3, 10 speed only			X	X
	52-110BCD	AL-7075-4mm	52TC-S1 use w/ 36T/38T only, SRAM chain only (w/date code)				
38-52	38-110BCD	AL-7075-3mm	38T-V1-110, 10 speed only			X	X
	52-110BCD	AL-7075-4mm	52TC-S1 use w/ 36T/38T only, SRAM chain only (w/date code)				
38-46	38	AL-7075-3mm	TRUVATIV 38		X	X	
	46	AL-7075-4mm	46-38				
30-39-50	30	AL-7075-3mm	30-V4			X	
	39	AL-7075-3mm	39-V4 (w/ date code)				
	50	AL-7075-4mm	50T-130-V1 use w/ 39T only				
30-39-52	30	AL-7075-3mm	30-V4			X	
	39	AL-7075-3mm	39-V4 (w/ date code)				
	52B	AL-7075-4mm	52B-V2 use w/ 39T only (w/ date code)				
30-42-52	30	Steel	30-V4	X	X		
	42	Steel	42-52 V3				
	52	Steel	52-V2				
30-42-52	30	Steel	30-V4		X		
	42	Steel	42-52 V3				
	52	AL7075-3mm	52-V2				
30-42-52	30	AL7075-3mm	30-V4		X		
	42	AL7075-3mm	42-52 V3				
	52	AL-7075-4mm	52-V2				

## NOTES

**COPYRIGHT**

This publication includes trademarks and registered trademarks of SRAM LLC designated by the symbols <sup>™</sup> and <sup>®</sup>, respectively.

Copyright © 2013 SRAM LLC

**[www.sram.com](http://www.sram.com)**

**world headquarters**  
**SRAM LLC**

1333 n. kingsbury st., 4th fl  
chicago, il 60642  
phone +1-312-664-8800  
fax +1-312-664-8826

**european headquarters**  
**SRAM europe**

paasbosweg 14-16  
3862ZS nijkerk  
the netherlands  
phone +31-33-450-6060  
fax +31-33-457-0200

**asian headquarters**  
**SRAM taiwan**

no. 1598-8 chung shan rd  
shen kang hsiang, taichung  
county road 49 taiwan r.o.c.  
phone +886-4-2564-3678  
fax +886-4-2561-3686