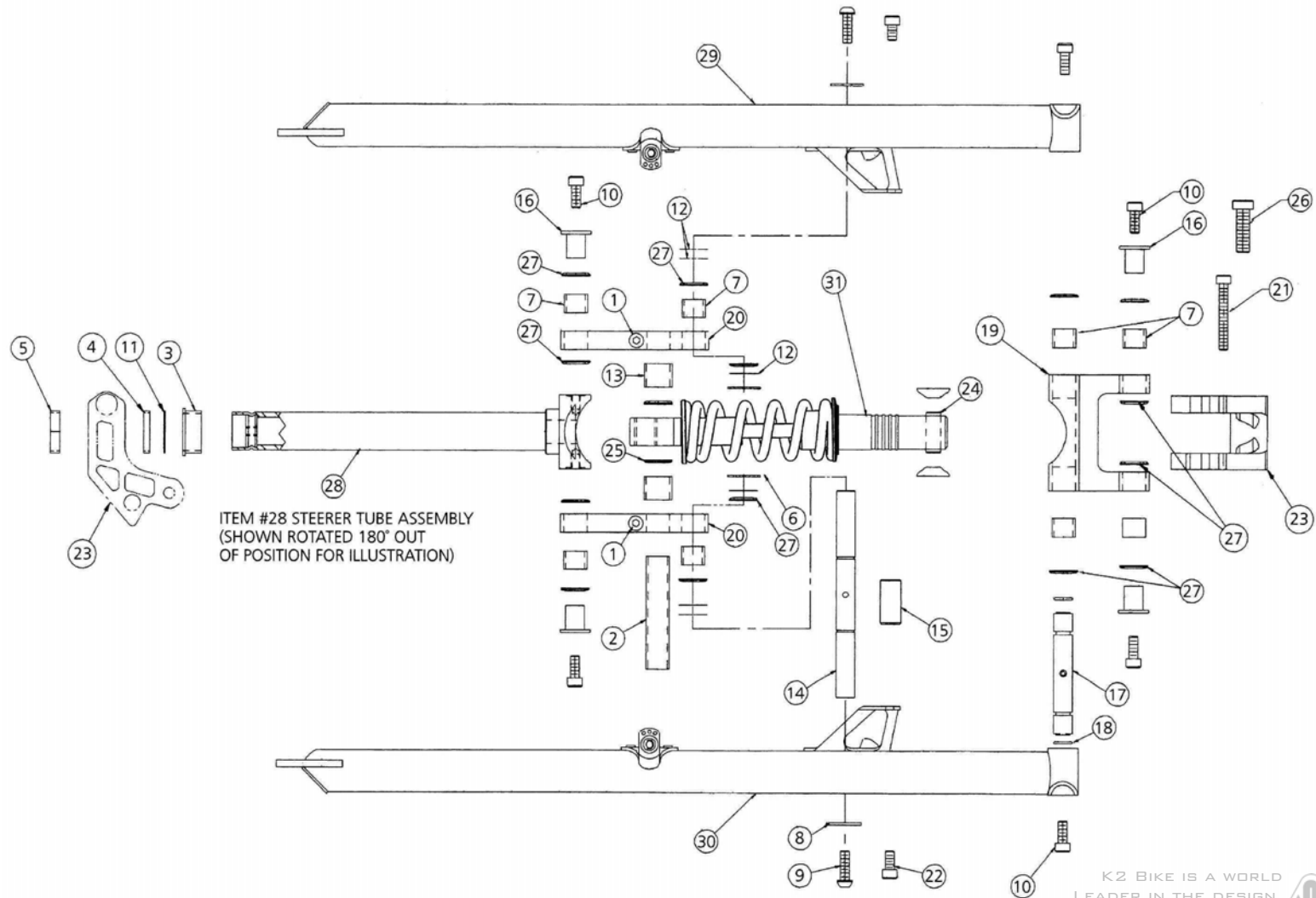




GIRVIN VECTOR II, GIRVIN AL



K2 BIKE IS A WORLD
LEADER IN THE DESIGN,
MARKETING AND SALES OF HIGH QUALITY
BIKES AND ACCESSORIES FOR ROAD, MOUNTAIN AND BMX USE.





GIRVIN VECTOR II, GIRVIN AL

ITEM#	PART#	KIT#	QTY.	DESCRIPTION
1	13792-1		2	M6 x 1 x 25 SHCS (LOWER LINK)
2	14109-1		1	PIVOT AXLE (LOWER SHOCK)
3	14112-2		1	BEARING SPACER (HEADSET SPACER 1 1/8")
4	14113-X		1	SPACER 1"
5	14113-X		1	SPACER 1"
6	14115		2	RETAINING RING (LOWER PIVOT)
7	14116	RK006	8	BEARING (LINKS)
8	14122		2	WASHER
9	14125		2	M6 x 1 x 20 BHCS (LOWER AXLE)
10	14131		6	M6 x 1 x 15 SHCS (LINKS, AXLES)
11	14150		1	SHIM, STAINLESS (0.5MM)
12	14180		6	SHIM WASHER (0.15MM)
13	14489		2	SPACER (LOWER SHOCK/LINKS)
14	14490		1	PIVOT ROD (LOWER AXLE)
15	14496		1	SPACER WITH CABLE STOP
16	14497		4	PIVOT, AXLE
17	14499		1	AXLE ROD, ECCENTRIC (UPPER AXLE)
18	14500		2	O-RING (ECCENTRIC)
19	14501		1	UPPER LINK ASSEMBLY
20	14502		2	LOWER LINK ASSEMBLY
21	14618		1	M6 x 1 x 45 SHCS (UPPER SHOCK)
22	14624		2	M5 x 0.8 x 10 SHCS (CABLE HANGER)
23	14813		1	UPPER LINK MOUNT
24	14851		1	SPACER TUBE (UPPER SHOCK)
25	15052		2	SEAL SPACER (LOWER SHOCK)
26	14856		1	M8 x 1.25 x 25 SHCS (UPPER LINK MOUNT)
27	14996	RK005	14	SEAL SPACER (EXTREME SEAL)
28	15003-3		1	STEERER, VECTOR II STANDARD 1 1/8" (197MM)*
28	15003-5		1	STEERER, GIRVIN AL STANDARD 1" (222MM)*
28	15003-6		1	STEERER, GIRVIN AL LONG 1" (259MM)*
28	15003-7		1	STEERER, GIRVIN AL STANDARD 1 1/8" (222MM)*



GIRVIN VECTOR II, GIRVIN AL

ITEM#	PART#	KIT#	QTY.	DESCRIPTION
29	14501-1		1	LEG, RIGHT STANDARD POLISHED
29	14505-1-BLK		1	LEG, RIGHT STANDARD BLACK
29	14501-1-YEL		1	LEG, RIGHT STANDARD YELLOW
29	14629-1P		1	LEG, RIGHT STANDARD EASTON POLISHED
29	14629-2P		1	LEG, RIGHT LONG EASTON POLISHED
29	14942-1		1	LEG, RIGHT STANDARD YELLOW
29	14975-1		1	LEG, RIGHT STANDARD CARBON
30	14511-1		1	LEG, LEFT STANDARD POLISHED
30	14511-1-BLK		1	LEG, LEFT STANDARD BLACK
30	14511-1-YEL		1	LEG, LEFT STANDARD YELLOW
30	14630-1P		1	LEG, LEFT STANDARD EASTON POLISHED
30	14630-2P		1	LEG, LEFT LONG EASTON POLISHED
30	14941-1		1	LEG, LEFT STANDARD YELLOW
30	14984-1		1	LEG, LEFT STANDARD CARBON
31	SHOCK		1	ODS SHOCK ASSEMBLY

* MEASUREMENT FROM CROWN RACE SEAT TO TOP OF STEERER.

DIAMETER MEASUREMENT REFERS TO SIZE OF CROWN RACE SEAT.

1 1/8" STEERERS REQUIRE 1 1/8" HEADSET SHIM, ITEM #3, PART# 14112-3