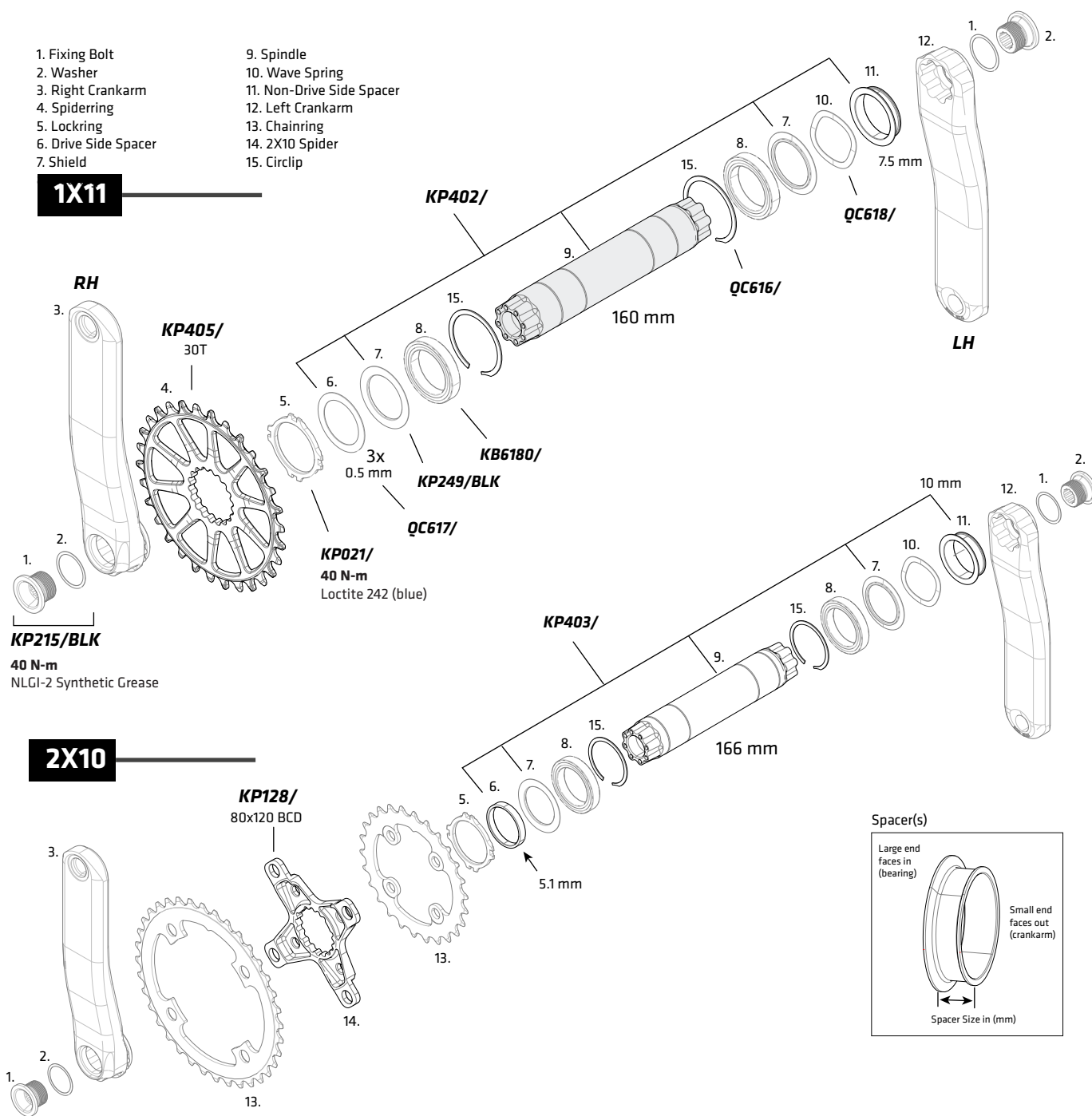


# SI HOLLOWGRAM FAT CAAD





NO.(QTY)	CODE	DESCRIPTION	COMMENT
6,7,9,11	KP402/	KIT,SPINDLE,BB30, FAT CAAD 1, 160MM	
6,7,9,11	KP403/	KIT,SPINDLE,BB30, FAT CAAD 2, 166MM	
4	KP405/	KIT, SPIDERRING, FAT CAAD 1, 30T	Use with 160mm spindle only!
5	KP021/	KIT, LOCKRING SL	Use service tool KT012/
8(2)	KB6180/	KIT, BEARING, BB-BB30	
7(2)	KP249/BLK	KIT, BEARING SHIELD, BB-SL2	
1(2),2(2)	KP215/BLK	KIT,CRANKBOLTS, H-GRAM SL2, (2)	

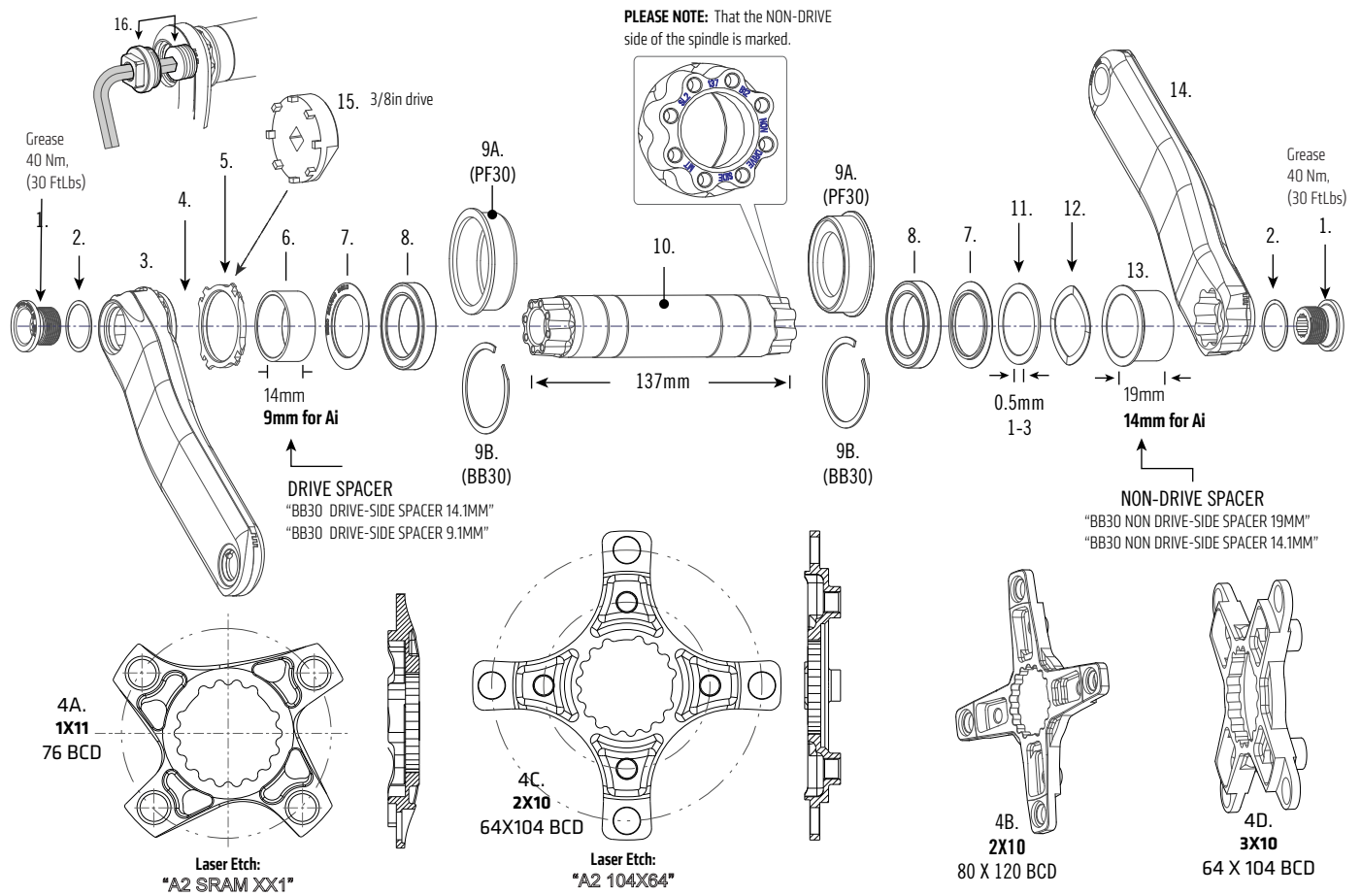
See SI HOLLOWGRAM MTN for crankarms, items (3) and (12) and also SI HOLLOWGRAM service tools.

# SI HOLLOWGRAM MOUNTAIN-KIT LIST

## Individual Replacement and Service Parts

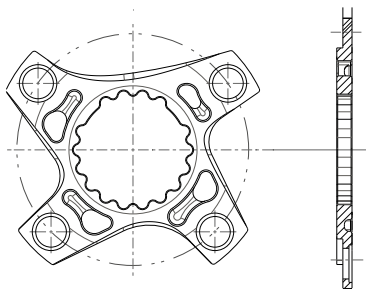
CRANKARMS	TYPE	RIGHT CRANKARM			LEFT CRANKARM				
		SISL2	HOLLOWGRAM SI	CANNONDALE SI		SISL2	HOLLOWGRAM SI	CANNONDALE SI	
	165mm	--	--	KP423/165R		--	--	KP423/165L	
	170mm	KP246/170R	KP305/170R	KP423/170R		KP246/170L	KP305/170L	KP423/170L	
	172mm	KP246/172R	KP305/172R	KP423/172R		KP246/172L	KP305/172L	KP423/172L	
	175mm	KP246/175R	KP305/175R	KP423/175R		KP246/175L	KP305/175L	KP423/175L	
CRANK BOLTS	1(2), 2(2)	KP251/BLK	KIT,CRANK BOLTS,H-GRAM SL2,(2)						
SPIDERS	4A	KP296/	KIT,SPIDER-SI MTN,XX1						
	4B	KP128/	KIT,SPIDER,SI MTN,SRAM 80/120BCD 4BOLT						
	4C	KP241/	KIT,SPIDER,SI MTN,SRAM 64/104BCD 4BOLT						
	4D	KF355/	KIT,SPIDER-SI MTN,TRIPLE 64/104BCD 4BOLT						
	4E	KP352/	KIT SPIDER SI MTN SRAM 64/104 4-BOLT AI			 - AI SPECIFIC FSI 29 2X10, 5mmCL			
	4F	KP354/	KIT SPIDER SI MTN XX1 AI			 - AI SPECIFIC FSI 29 1X11, 5mmCL			
			CU4041SI30	MTB SPIDERING SL 30T X-SYNC					
			CU4041SI32	MTB SPIDERING SL 32T X-SYNC					
			CU4041AI30	MTB SPIDERING SL 30T X-SYNC AI OFFSET					
			CU4041AI32	MTB SPIDERING SL 32T X-SYNC AI OFFSET					
		CU4041AI34	MTB SPIDERING SL 34T X-SYNC AI OFFSET						
SPINDLE	5	KP021/	KIT,LOCKRING-SL			--REQUIRES KT012/			
	1(2), 2(2), 6, 7(2) 8(2), 9A(2), 9B(2) 10, 11(3), 12, 13	KP306/	KIT,BB,CDALE SI,68/73X137 BB30/PF30						
		KP402/	KIT, SPINDLE, H'GRAM, FAT CAAD1, 160MM			NEW FOR 2016			
		KP403/	KIT, SPINDLE, H'GRAM, FAT CAAD2, 166MM						
		--	KP218/	KIT,LOCTITE 609 W/ACTIVATOR					
MISC	9B(2)	QC616/	KIT,CIRCLIP,BB-SI						
	8(2)	KB6180/	KIT,BEARING,BB-BB30			(SKF#6806-2RS /SRI2 /90% FILL)			
	8(2), 9A(2)	KP197/	KIT,BEARING,BB-PF30						
	7(2)	KP249/BLK	KIT,BEARING SHIELD,BB-SL2						
	10	KP308/	KIT,SPINDLE-SI MTN, 137MM			RUNNING PRODUCTION CHANGE See Ai comparision graphic.			
	11	QC617/	KIT,SHIMS-PLASTIC, BB-SI; INCL 5 SHIMS						
	12	QC618/	KIT,WASHER-WAVE, BB-SI						
			KP009/	KIT,ADAPTER,SIBB TO 68MM TAP					
TOOLS/ ADAPTER			KP010/	KIT,ADAPTER,SIBB TO 73MM TAP					
			KT010/	KIT,TOOL-BB BEARING-SI;			Use w/ headset press to install bearings		
			KT011/	KIT,TOOL - BEARING REMOVAL SI;			To remove si bottom bracket earings		
	15		KT012/	KIT,TOOL-LOCK RING-SI					
	16		KT013/	KIT,CRANK EXTRACTION TOOL; 2 PIECES					
			KF365/	KIT,TOOL,SIBB/68 ADP.INSTALL					
			KF368/	KIT,TOOL,SIBB/73 ADP.INSTALL					
			KF366/	KIT,TOOL,SIBB ADAPTR EXTRACT					

# SI HOLLOWGRAM MOUNTAIN-KIT LIST

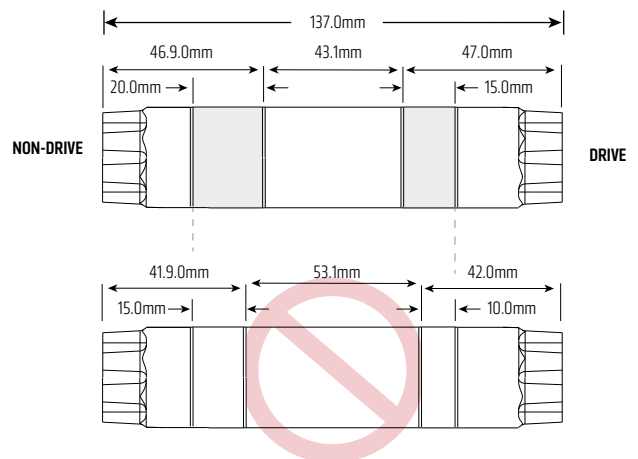
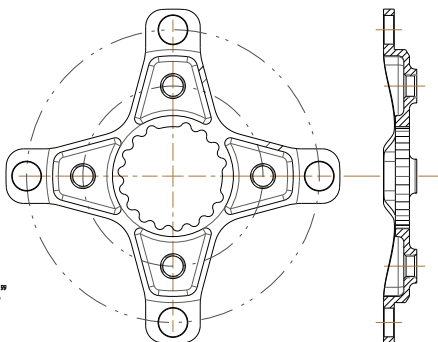


## SPECIFIC COMPONENTS

4F.  
1X11  
5mm CL Offset  
76 BCD  
Laser Etch:  
"A2 SRAM 1X CL\_55.6"



4E.  
2X10  
5mm CL Offset  
64X104 BCD  
Laser Etch:  
"A2 SRAM 2X10 5mmCL"

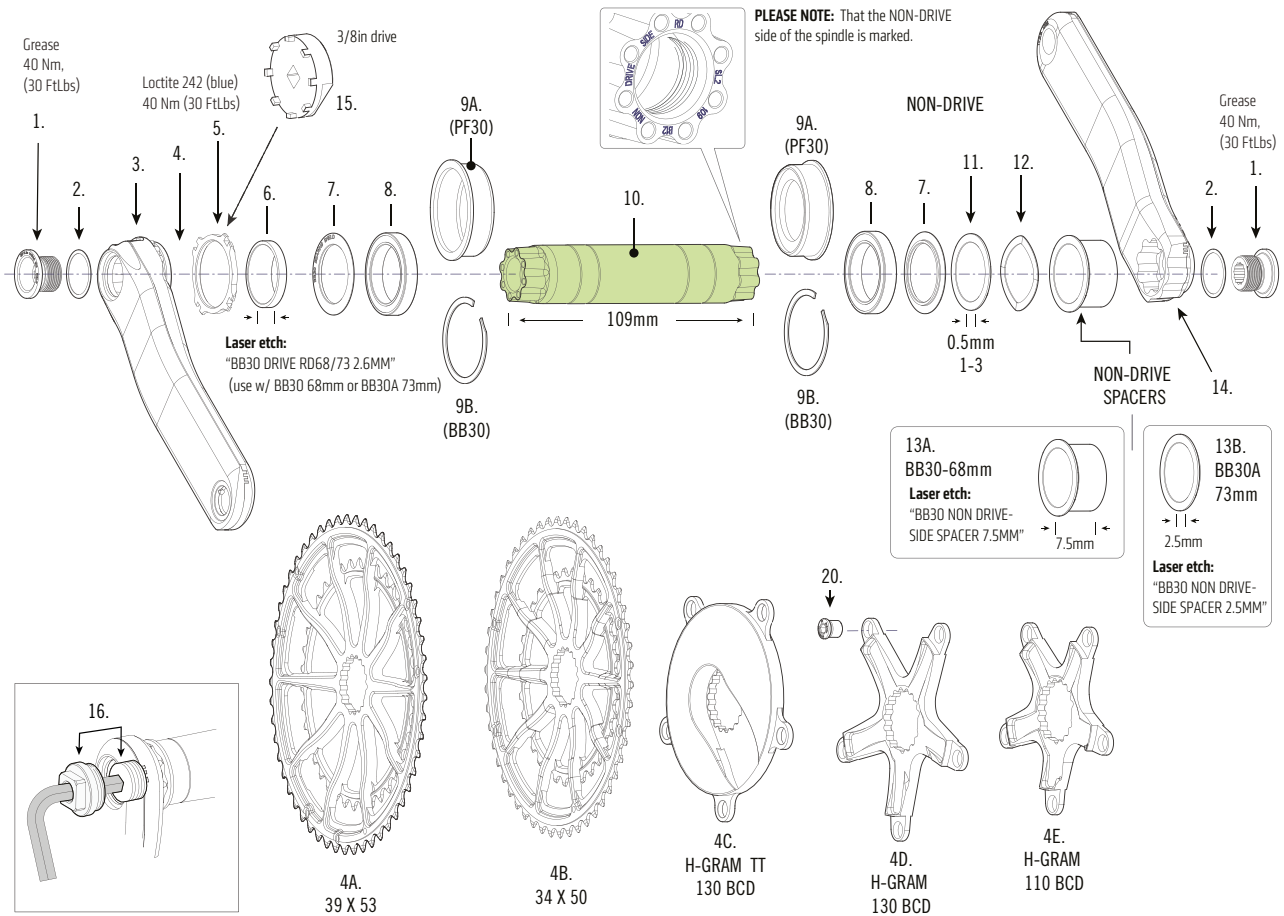


### PLEASE NOTE:

The bearing lands (areas shown shaded) of the 137mm Ai compatible spindle (top) are 5mm wider than the previous revision 137mm spindle (bottom).

Also, the Ai compatible 137mm spindle IS compatible with non-Ai Hollowgram MTN cranksets. However, the older revision spider is not Ai compatible.

# SI HOLLOWGRAM ROAD - KIT LIST



NO. (QTY)	CODE	DESCRIPTION	COMMENT
<b>CRANKSET</b>	C711200001	CRANKSET,SL2,ROAD 39/53,170	
	C711300001	CRANKSET,SL2,ROAD 39/53,172	
	C711400001	CRANKSET,SL2,ROAD 39/53,175	
	C711100002	CRANKSET,SL2,ROAD 34/50,165	
	C711200002	CRANKSET,SL2,ROAD 34/50,170	
	C711300002	CRANKSET,SL2,ROAD 34/50,172	
	C711400002	CRANKSET,SL2,ROAD 34/50,175	
	C711200003	CRANKSET,HGSI,ROAD 39/53,170	
	C711300003	CRANKSET,HGSI,ROAD 39/53,172	
	C711400003	CRANKSET,HGSI,ROAD 39/53,175	
	C711100004	CRANKSET,HGSI,ROAD 34/50,165	
	C711200004	CRANKSET,HGSI,ROAD 34/50,170	
	C711300004	CRANKSET,HGSI,ROAD 34/50,172	
	C711400004	CRANKSET,HGSI,ROAD 34/50,175	

# SI HOLLOWGRAM ROAD - KIT LIST

## Individual Replacement and Service Parts

CRANKARMS	TYPE	RIGHT CRANKARM				LEFT CRANKARM		
		SISL2	HOLLOWGRAM SI	CANNONDALE SI		SISL2	HOLLOWGRAM SI	CANNONDALE SI
	165mm	--	--	KP423/165R		--	--	KP423/165L
	170mm	KP246/170R	KP305/170R	KP423/170R		KP246/170L	KP305/170L	KP423/170L
	172mm	KP246/172R	KP305/172R	KP423/172R		KP246/172L	KP305/172L	KP423/172L
	175mm	KP246/175R	KP305/175R	KP423/175R		KP246/175L	KP305/175L	KP423/175L
CRANK BOLTS	1(2), 2(2)	KP251/BLK	KIT,CRANK BOLTS,H-GRAM SL2,(2)					
SPIDERS	4A	CU4042SI53	ROAD SPIDERING 53/39 SI (10ARMS)					
	4A	KP408/	ROAD SPIDERING 52/36 (8ARMS)					
	4B	CU4042SI50	ROAD SPIDERING 34/50 SI (10ARMS)					
	4B	KP407/	ROAD SPIDERING 34/50 (8ARMS)					
	4C	KP137/	KIT,SPIDER,H-GRAM AERO,130BCD					
	4D	QC694/	KIT,SPIDER,H-GRAM SI,130MM BCD					
	4E	QC693/	KIT,SPIDER,H-GRAM SI,110MM BCD					
	4F	KF360	KIT,BOLT,SI C-RING, MK4/5 ONLY					
	5	KP021/	KIT,LOCKRING-SL			--REQUIRES <b>KT012/</b>		
SPINDLE	1(2), 2(2), 6, 7(2) 8(2), 9A(2), 9B(2) 10, 11(3), 12, 13	KP248/	KIT,BB,COALE SL2,68X109 BB30/PF30					
MISC	--	KP218/	KIT,LOCTITE 609 W/ACTIVATOR					
	9B(2)	QC616/	KIT,CIRCLIP,BB-SI					
	8(2)	KB6180/	KIT,BEARING,BB-BB30			(SKF#6806-2RS /SRI2 /90% FILL)		
	8(2), 9A(2)	KP197/	KIT,BEARING,BB-PF30					
	7(2)	KP249/BLK	KIT,BEARING SHIELD,BB-SL2					
	11	QC617/	KIT,SHIMS-PLASTIC, BB-SI; INCL 5 SHIMS					
	12	QC618/	KIT,WASHER-WAVE, BB-SI					
TOOLS/ ADAPTER		KP009/	KIT,ADAPTER,SIBB TO 68MM TAP					
		KP010/	KIT,ADAPTER,SIBB TO 73MM TAP					
		KT010/	KIT,TOOL-BB BEARING-SI;			Use w/ headset press to install bearings		
		KT011/	KIT,TOOL - BEARING REMOVAL SI;			To remove si bottom bracket earrings		
	15	KT012/	KIT,TOOL-LOCK RING-SI					
	16	KT013/	KIT,CRANK EXTRACTION TOOL; 2 PIECES					
		KF365/	KIT,TOOL,SIBB/68 ADP.INSTALL					
		KF368/	KIT,TOOL,SIBB/73 ADP.INSTALL					
		KF366/	KIT,TOOL,SIBB ADAPTR EXTRACT					