



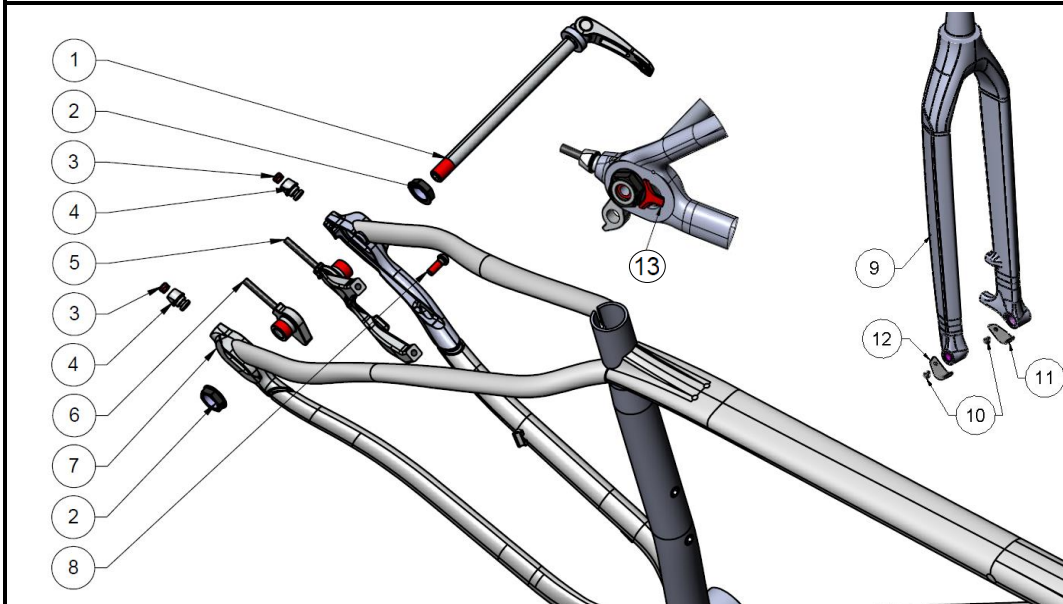
TREK

MTB Frame Diagram & Technical Information

Trek Horizontal Sliding Dropouts

Applicable Models:

2015 & 2016 Superfly Single Speed, 2016 through 2022 Stache & Farley, 2018-2022 1120



Suspension Hardware

Number	TCG Part Number	Description	Torque/Notes	Quantity
1	W331115	Trek Hardtail Convert Rear Skewer	Superfly SS - 142x12	1
1	W508920	Trek Boost 148 Hardtail Rear Skewer	Stache 29+ - 148x12	1
1	W515991	Trek Farley 197 Fatbike Rear Skewer	Farley - 197x12	1
2	517009	Trek Hardtail Convert Nut		2
3		Horizontal Sliding Nylock Nut		2
4		Horizontal Sliding Tensioner Nut		2
5		Horizontal Sliding Non-Drive Plate with Disc Tabs		1
6	W504671 or 517009	Horizontal Sliding Drive Side Plate with Derailleur Hanger		1
7	NA	Trek Hardtail Frame		1
8	517009	Horizontal Sliding Disc Tab Fixing Bolt w/ washer		1
9	OE Only	Bontrager Bowie Pro Fork - Alloy Steer	OE Only	1
9	511783	Bontrager Bowie Pro Fork - Carbon Steer	TCG Option	1
9	OE Only	Bontrager Haru Pro Fork - Alloy Steer	OE Only	1
9	524831	Bontrager Haru Pro Fork - Carbon Steer	TCG/Farley 9.8	1
10	517091	Bowie Pro Carbon Armor - Fasteners		2
11		Bowie Pro Carbon Armor - Non Drive Side		1
12		Bowie Pro Carbon Armor - Drive Side		1
13	OE Only	Horizontal Sliding Lawyer Tabs - Leave installed for initial sale but not needed for post-sale adjustments. Stock on Farley models with Front Derailleurs	OE Only	2
Not Pictured	W315168	Trek Compression Plug - All Carbon Fiber Steer Forks		1
Not Pictured	W508492	Bontrager Bowie Pro Front Fork Skewer	100x15	1
Not Pictured	W515993	Bontrager Haru Pro Front Fork Skewer	150x15	1

Hardware & Pad Kits

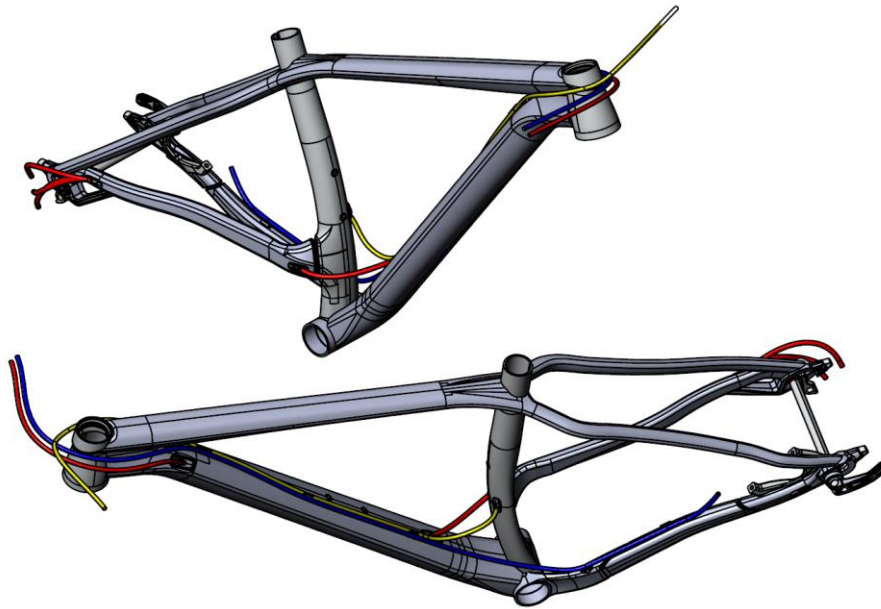
Number(s)	TCG Part Number	Description	Notes	Quantity
2-6, 8	517009	Trek MTB Horizontal Sliding Dropout Kit		1
10-12	517091	Bontrager Bowie/Haru/1120 Fork Replacement Hardware		1

Technical Information and Specifications - 2015 & 2016 Superfly SS	
Item	Description or Specification
Frame Travel	Rigid Hardtail / Suspension Corrected to 100mm Travel
Designed Fork Axle-Race	501mm
Available Sizes	15.5", 17.5", 18.5", 19.5", 21.5", 23"
Max Chainrings	34 T
Front Derailleur Style	NA
Rear Brake Mount	Direct Post Mount, 160mm Adaptable to 180mm, 180mm Max
Wheel Size	29
Bottom Bracket	Pressfit BB89.5 (Requires 2.5mm Spacer on Drive Side)
Designed Q-Factor	166 mm
Headset Style	Fully Integrated/ IS with E2 Taper
Max Tire Size	2.0"
Rear Hub OLD	142x12 Only
Seatpost OD	27.2mm
Seat Collar ID	31.9mm
Derailleur Hanger	W504671 (Single Speed version is OE only)
Internal Cable Routing Options	None (Rear Brake is External Only)

Technical Information and Specifications - 2016 through 2020 Stache 29+ (frame only 2021+)	
Item	Description or Specification
Frame Travel - Stache 5 29+	Rigid Hardtail / Suspension Corrected to 100mm Travel
Frame Travel - Stache 29+	100mm to 120mm Front Suspension Travel
Designed Fork Axle-Race	451mm
Available Sizes	Aluminum: 15.5", 17.5", 18.5", 19.5", 21.5" / Carbon: 15.5", 17.5", 19.5", 21.5"
Max Chainrings	32T (1x Only) NOTE: 34T will <i>clear</i> but not with an 11 speed drivetrain; 30T is recommended
Front Derailleur Style	NA
Rear Brake Mount	Direct Post Mount, 160mm Adaptable to 180mm, 180mm Max
Wheel Size	29x3.0"
Bottom Bracket	Pressfit BB92 (No 2.5mm Spacer) - Note Carbon will NOT fit BB30 Cranks
Designed Q-Factor	166mm
Headset Style	Fully Integrated/ IS with E2 Taper
Max Tire Size	3.0" Long Position, 2.2" Short Position
Rear Hub OLD	148x12 Only
Seatpost OD	31.6mm
Seat Collar ID	36.4mm
Derailleur Hanger	W504671
Internal Cable Routing Options	Rear Derailleur, Stealth Dropper Post, Rear Brake Line on Carbon Models

Technical Information and Specifications - 2016 through 2022 Farley	
Item	Description or Specification
Frame Travel - Farley 9	100mm Front Suspension Travel
Frame Travel - Farley 5, 7, 9.6, 9.8	Rigid Hardtail / Suspension Corrected to 100mm Travel
Designed Fork Axle-Race	490mm
Available Sizes	15.5", 17.5", 19.5", 21.5"
Max Chainrings	Small: 22T (2x) / Middle: 32T (1x) / Large: 36T (2x)
Front Derailleur Style	Low Direct Mount (aka S3 or E-Type), Top Pull
Rear Brake Mount	Direct Post Mount, 160mm Adaptable to 180mm, 180mm Max
Wheel Size	26x4.7, or 27.5x3.8
Bottom Bracket	Pressfit BB121
Designed Q-Factor	170mm
Headset Style	Fully Integrated/ IS with E2 Taper
Max Tire Size	4.7" (26" Diameter), or 4.5" (27.5" Diameter)
Rear Hub OLD	197x12 Only
Seatpost OD	31.6mm
Seat Collar ID	36.4mm
Derailleur Hanger	W504671
Internal Cable Routing Options	Shift Lines, Stealth Dropper Post

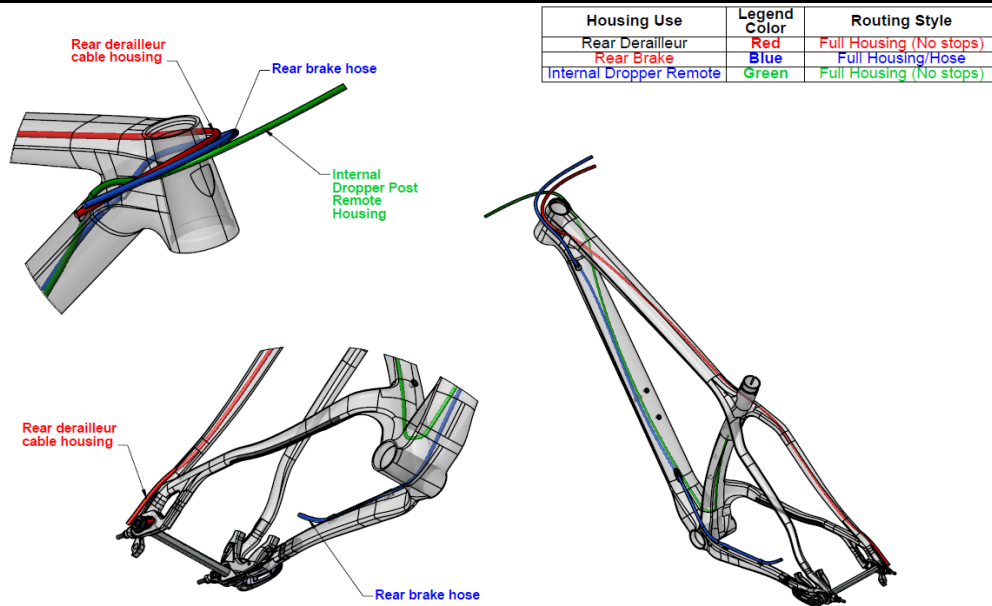
Cable Routing Diagram, Stache 29+ Aluminum & 1120



Cable Routing Hardware, Stache 29+ Aluminum & 1120

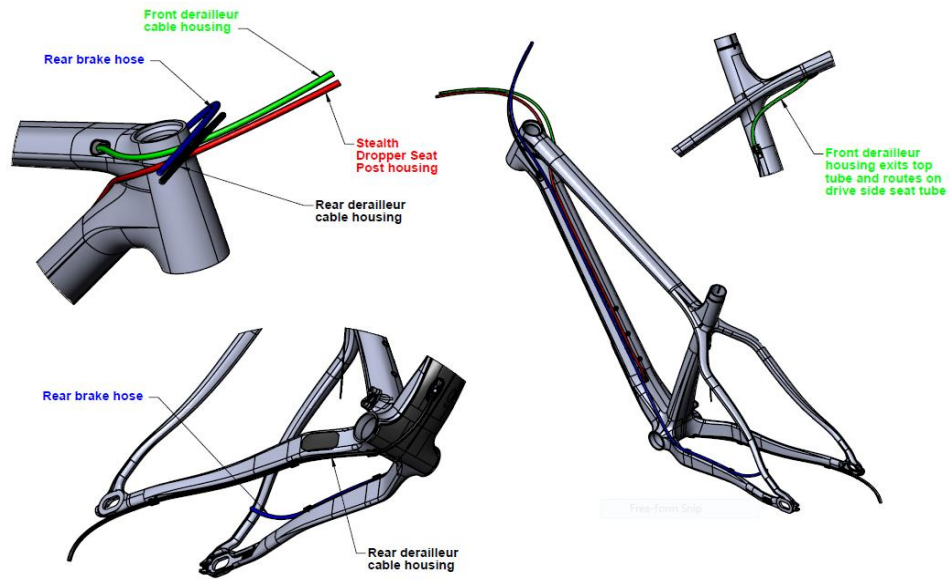
Part Number	Description	Notes	Quantity
W439610	Rear Derailleur Cable Exit Guide		1
W318529	Cable Exit Guide Fastener, M3x0.5x12mm		1

Cable Routing Diagram, Stache 29+ Carbon



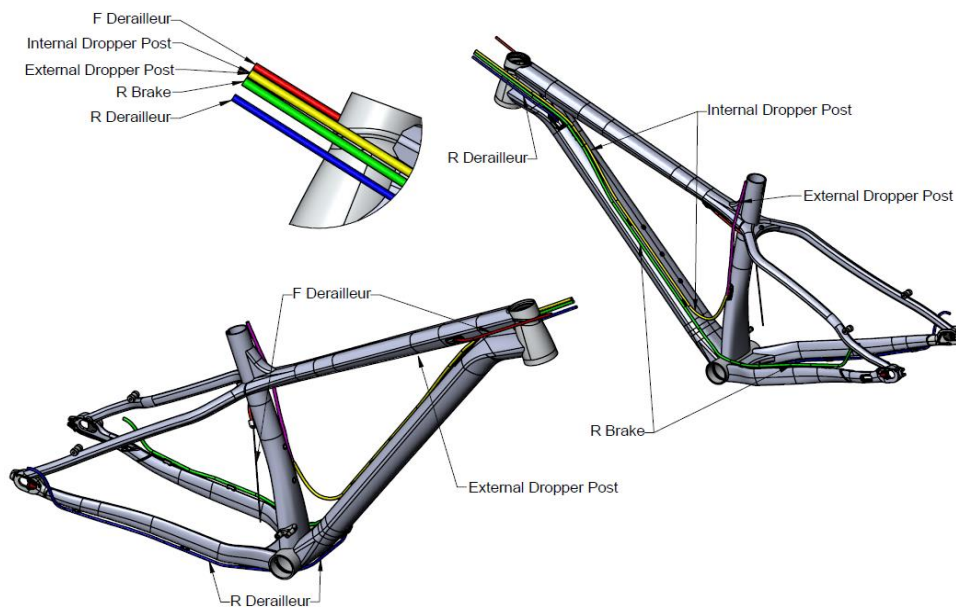
Part Number	Description	Notes	Quantity
W543605	Rear Brake Hose Entry Guide		1
W533334	Rear Brake Hose Exit Guide		1
W318627	Dropper Cable Entry Guide		1
W318529	Cable Exit Guide Fastener, M3x0.5x12mm		3

Cable Routing Diagram, Farley Carbon



Part Number	Description	Notes	Quantity
W315463	Deraillleur Cable Entry Guide		2 for 2x, 1 for 1x
W439610	Deraillleur Cable Exit Guide		2 for 2x, 1 for 1x
W318529	Cable Exit Guide Fastener, M3x0.5x12mm		4
W318628	Deraillleur Cable Entry Plug		0 for 2x, 1 for 1x
W329840	Deraillleur Cable Exit Plug		0 for 2x, 1 for 1x
W321530	Dropper Post Entry Hole Plug		1 for Rigid Post Setup

Cable Routing Diagram, Farley Alloy



Part Number	Description	Notes	Quantity
W439610	Deraillleur Cable Exit Guide		2 for 2x, 1 for 1x
W318529	Cable Exit Guide Fastener, M3x0.5x12mm		4
W320324	Deraillleur Cable Entry Plug		0 for 2x, 1 for 1x
W329840	Deraillleur Cable Exit Plug		0 for 2x, 1 for 1x