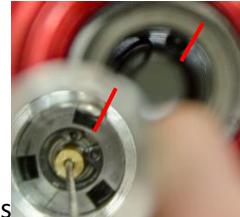


Step 1: Shuttle insertion

Shuttle must be inserted on right side. For that be careful with:

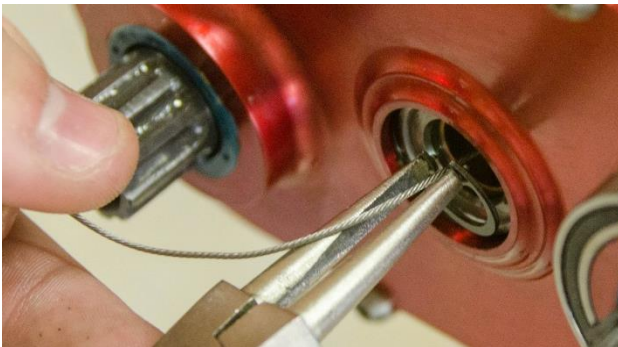


- Insertion direction otherwise cables will unravel.



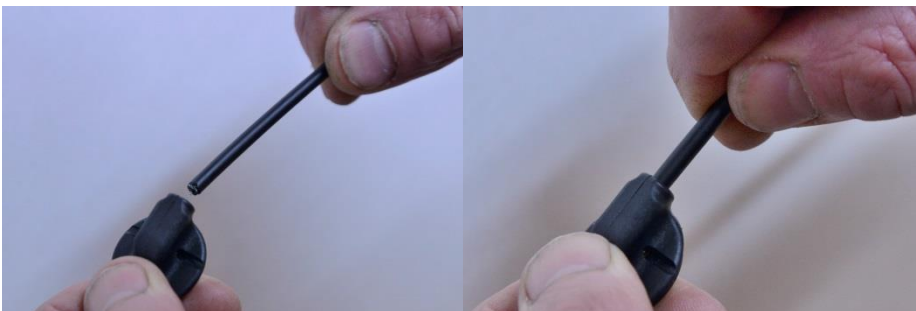
- Insertion position : the 3 grooves must be align with the 3 ball lines


Place retaining ring:



Step 2: Gearbox cable routing

Insert cable wire on cable routing. You must force in to be sure that this one is fully inserted



 **Caution:** there is 2 cable wire length. Longest one is for right side.

Trigger setup v1.1

Check that sealing is properly placed on the groove



Place it on the flange (to be easier, push and turn the cable routing on the same time)



Do the same for left side.

Place end cap on right side :

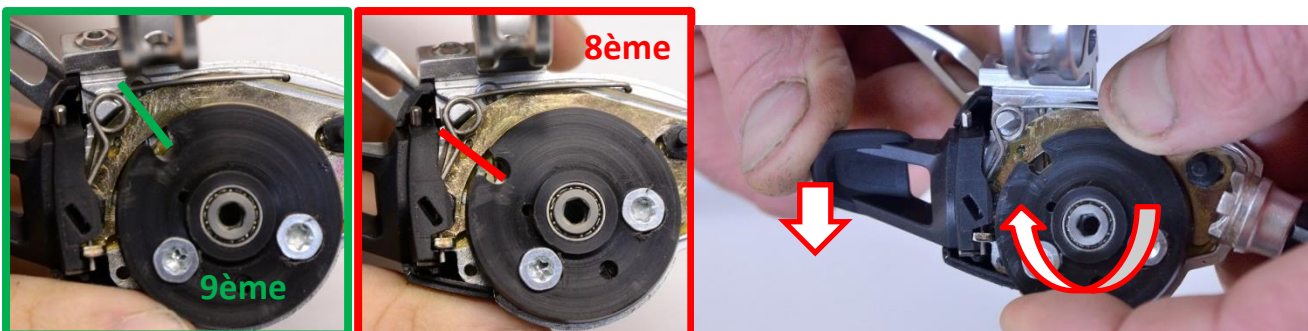


Step 3: Shifter linking

Remove trigger cover



Control that 9th gear is selected. If not, push the trigger and turn manually the sprocket to shift to the 9th gear.



In case of trouble or doubt please contact us at: contact@effigear.com or (+33)4 74 53 64 89

Trigger setup v1.1
Insert right cable on the shifter.

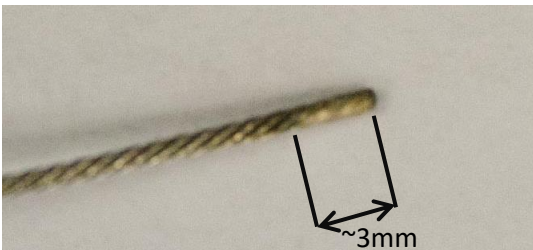


Place and tighten the “cable clamp”, place it on the cable support. Lock at **1.5-2.5Nm**.



⚠ Caution: the shifter cable is specific. Its stronger than standard cable but this one is fragile if you don't tighten it carefully.

First of all the cable must be tightened on the brazed area:



To be sure: the cable end must outcrop the “cable clamp” as show on following picture:



If cable is tighten to far or to short this one will be damaged or may slip during utilization.

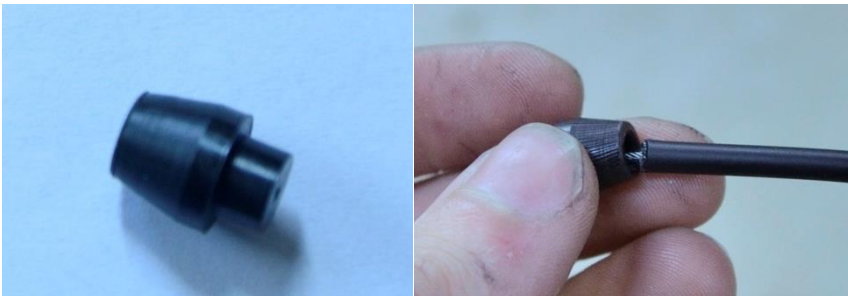
In case of trouble or doubt please contact us at: contact@effigear.com or (+33)4 74 53 64 89

Trigger setup v1.1
Close the shifter




Step 4: Spring linking

On left side, place the special end cap at the end of the cable wire



Place and tighten the "spring cable clamp". Lock at **1.5-2.5Nm**.



 **Caution:** tighten the 2 screw properly as show:




Then Remove white sheet of plastique to release the spring

In case of trouble or doubt please contact us at: contact@effigear.com or (+33)4 74 53 64 89

Trigger setup v1.1
Place the end cap properly



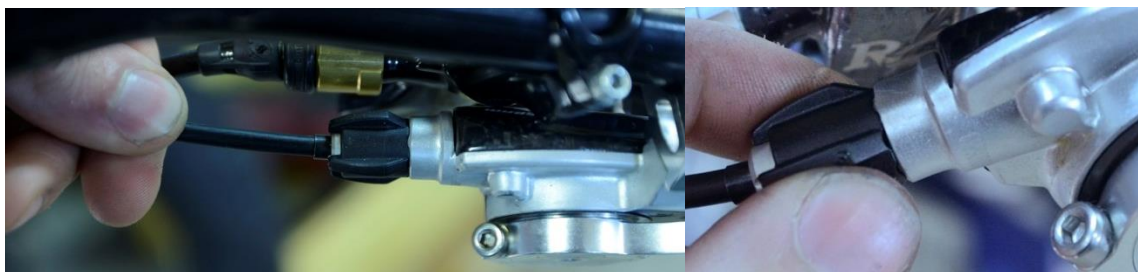
 **Caution:** risk of pinching

Step 6: Setup

Shift to the first gear by pushing the main trigger



Then pull on the cable wire and increase tension until you have 2mm of play (you must pull hard because the return spring is under tension).



Done! Enjoy your ride!

In case of trouble or doubt please contact us at: contact@effigear.com or (+33)4 74 53 64 89